



Guide Price
£275,000

Freehold

3x  2x  1x 

**Cross Lane, Newport,
Isle of Wight, PO30**

OVER 60?

Secure this property
for up to **59% less!**

Pittis 
Helping you move forwards



Main features

- Modern semi detached house conveniently situated for Newport
- En-suite shower room to the primary bedroom
- Enclosed garden with workshop
- Stylish kitchen with built in appliances
- Block paved driveway for several vehicles

Accommodation

GROUND FLOOR

Hall
Cloakroom
Lounge / Dining Room: 16'2 x 14'7 (4.93m x 4.45m)
Kitchen: 12'8 x 7'0 (3.86m x 2.14m)

FIRST FLOOR

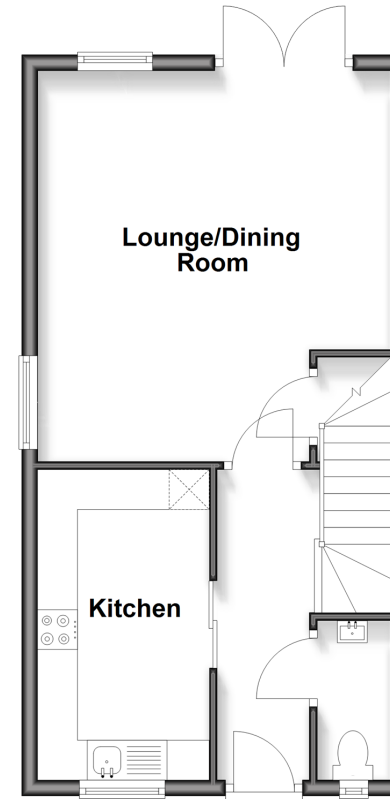
Landing
Bathroom
Bedroom 2 : 10'8 x 8'0 (3.25m x 2.44m)
Bedroom 1: 15'2 x 7'11 (4.63m x 2.41m)
En-suite Shower Room
Bedroom 3 : 11'6 x 6'2 (3.51m x 1.88m)

OUTSIDE

Driveway
Rear Garden
Workshop / Chalet

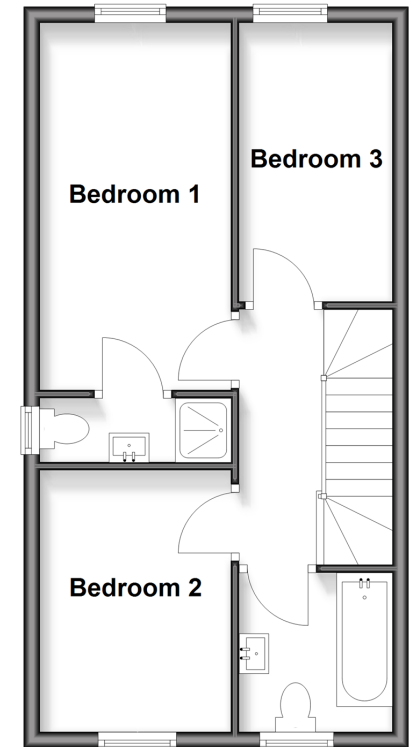
Ground Floor

Approx. 39.4 sq. metres (423.7 sq. feet)



First Floor

Approx. 39.4 sq. metres (423.7 sq. feet)



Call Newport - 01983 528888 ■ pittis.co.uk

- Legal advice should be taken to verify fixtures/fittings, planning, alterations and/or lease details
- Appliances & services are untested, dimensions are approximate and floor plans are not to scale
- Through a Homewise Home For Life Plan people aged 60+ can secure this property for up to 50% less, by purchasing a Lifetime Lease.



60324053/20251028/SC/NH