



9 Worcester Street

Stourbridge, DY8 1AH

Andrew Grant

9 Worcester Street

Stourbridge, DY8 1AH

2 Bedrooms 1 Bathroom 3 Reception Rooms

Deceptively spacious terraced home with a vaulted kitchen extension, character fireplaces, private garden and an exceptionally rare double garage of impressive proportions, a standout feature in an area where parking is at a premium, conveniently positioned just moments from Stourbridge town centre and offered for sale with no onward chain.

- Deceptively spacious early twentieth century terraced townhouse arranged over three floors with cellar and contemporary kitchen extension
- Retains charming character features including a bay fronted sitting room with wood panelling, ornate fireplaces and original staircase
- Low maintenance rear garden with paved terrace, lawn and raised borders, enclosed by high fencing for seclusion
- An exceptionally spacious double width garage provides secure parking for two vehicles alongside useful storage or workshop space, with power, lighting and external floodlights.
- Superbly positioned near Stourbridge town centre, transport links, parks and popular schools including Greenfield and St Josephs

This deceptively spacious early twentieth century terraced home combines period charm with modern convenience. Original fireplaces, floorboards and a bay window with wood panelling enhance the elegant reception rooms, while a vaulted kitchen extension added in 2013 creates a bright contemporary space opening onto a low maintenance garden. A galley staircase leads past a wine cellar to two generous bedrooms and a stylish bathroom with freestanding slipper bath and separate shower. Exceptionally rare for this central location, the property also benefits from a substantial double width garage and additional off road parking accessed via a shared archway. Moments from the town centre and offered for sale with no onward chain.

1740 sq ft (161.6 sq m)





The kitchen

A bright vaulted kitchen forms the contemporary hub of the home, ideal for cooking and casual dining. Skylights flood the space, highlighting bespoke white cabinetry, quartz worktops, a Belfast sink and an integrated gas hob with sleek extractor. Large floor tiles lead to a side door opening to the patio and the room flows easily into the adjoining dining room.





The dining room

The dining room provides a charming setting for family meals and gatherings. Exposed timber floorboards and a cast iron stove on a brick hearth underline its period appeal. A large window overlooks the courtyard and a step down from the hallway links this space with the kitchen and living room.



The living room

A cosy living room offers a relaxed space to unwind. The cast iron fireplace with timber surround and tiled hearth forms a beautiful focal point, complemented by exposed floorboards. This inviting room lies adjacent to the dining room and a wide window frames views to the garden.



The sitting room

The formal sitting room enjoys an elegant ambience at the front of the home. A bay window with original wood panelling and seat draws the eye, while an ornate cast iron fireplace with colourful tile slips provides warmth. Polished timber floorboards enhance the period feel, and the room opens directly off the hallway.





The hallway and landing

The welcoming hallway sets the tone as you enter the home. It features a stained glass front door, patterned tiled flooring and original panelled staircase with turned balustrade. Part glazed internal doors allow sightlines through to the reception rooms, and the hallway provides access to the cellar, reception rooms and dining room.





The primary bedroom

The primary bedroom occupies a generous portion of the first floor, providing a restful retreat. A cast iron fireplace adds character, flanked by built-in cupboards, and dual large windows overlook the street. The room offers plenty of space for furnishings and enjoys a bright yet private feel.



The second bedroom

The second bedroom is equally well proportioned, ideal for guests or family. A decorative cast iron fireplace with painted detail creates a focal point, and a large window draws in light. There is good space for bedroom furniture and a neutral palette ensures flexibility.



The bathroom

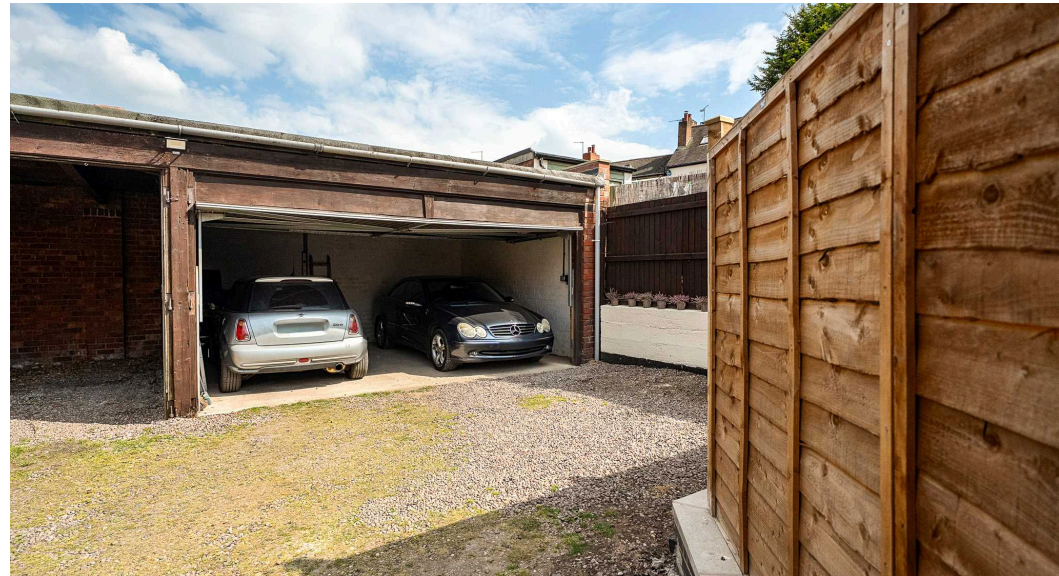
The impressive bathroom is luxuriously appointed for indulgent bathing. At its centre stands an original cast slipper bath with claw feet, accompanied by a separate shower, classic pedestal basin and WC. Built in storage cupboards keep the space organised and a large frosted window ensures privacy while allowing light to enter.



The garden

The rear garden offers a low maintenance outdoor haven for relaxing and entertaining. A broad paved terrace flows onto a small lawn edged by raised borders and gravelled beds. High timber fencing encloses the space for privacy and there is a gate to the parking and garage.





The parking

Beyond the garden lies a substantial hardstanding area leading to an impressively sized double width garage. Accessed via a shared archway, this exceptionally rare feature is a major advantage in an area where parking is extremely limited, providing secure covered parking for two vehicles with ample additional space for storage, workshop or hobby use. The garage also benefits from power, lighting and external floodlights, while a dedicated bin storage area and further gravelled parking in front offer added practicality and convenience for visitors.

Location

9 Worcester Street is situated moments from the heart of Stourbridge, placing shops, cafes and everyday amenities right on the doorstep. Families are well served by nearby schooling including Greenfield Primary, St Josephs Catholic Primary, Oldswinford Hospital School and the Rudolf Steiner Elmfield School. Worcester Street is served by regular bus services and the town centre transport hub provides both rail and bus connections. Mary Stevens Park lies at the other end of the road, while road links via the A491 and M5 offer straightforward access to the Black Country, Birmingham and the wider Midlands.

Services

The property benefits from mains gas, electricity, water and drainage.

Broadband Speed: Ultrafast broadband available. Download speeds up to 2000 Mbps and upload speeds up to 2000 Mbps (source: Ofcom checker).

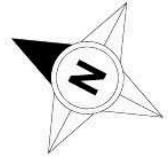
Mobile Coverage: Likely available from EE, O2, Three and Vodafone. (source: Ofcom checker).

Flood Risk (Long-term forecast): According to the Environment Agency's long-term flood risk data, the property is currently at very low risk for river and surface water flooding.

Council Tax

The Council Tax for this property is Band C.





Worcester Street, Stourbridge, DY8

Approximate Area = 1416 sq ft / 131.5 sq m

Garage = 324 sq ft / 30.1 sq m

Total = 1740 sq ft / 161.6 sq m

For identification only - Not to scale



Floor plan produced in accordance with RICS Property Measurement 2nd Edition, Incorporating International Property Measurement Standards (IPMS2 Residential). © n̄checom 2026. Produced for Andrew Grant. REF: 1439597



DISCLAIMER: These particulars are not to form part of a Sale Contract owing to the possibility of errors and/or omissions. Prospective purchasers should therefore satisfy themselves by inspection or otherwise as to their correctness. All fixtures, fittings, chattels and other items not mentioned are specifically excluded unless otherwise agreed within the Sale Contract documentation or left in situ and gratis upon completion. The property is also sold subject to rights of way, public footpaths, easements, wayleaves, covenants and any other matters which may affect the legal title. The Agent has not formally verified the property's structural integrity, ownership, tenure, acreage, estimated square footage, planning/building regulations' status or the availability/operation of services and/or appliances. Therefore prospective purchasers are advised to seek validation of all the above matters prior to expressing any formal intent to purchase. We commonly receive referral fees from specialist service partners – an outline of these can be found here: <https://cutt.ly/referrals> and are reviewed annually in line with our financial year to identify any changes in average fee received.



Andrew Grant

T. 01905 734734

E. hello@andrewgrant.com

andrewgrant.com