



## Point Hill, SE10

£800,000

An opportunity to acquire this absolutely beautiful two bedroom end of terrace family home that has been finished to a high standard and is immaculate throughout, the property further benefits from front and rear gardens, allocated parking and side access into the garden. A viewing is highly recommended.

### Features

Immaculate Throughout  
Two Bedrooms  
No Work Required  
Very Sought After Location  
West Facing Sunny Garden  
Modern

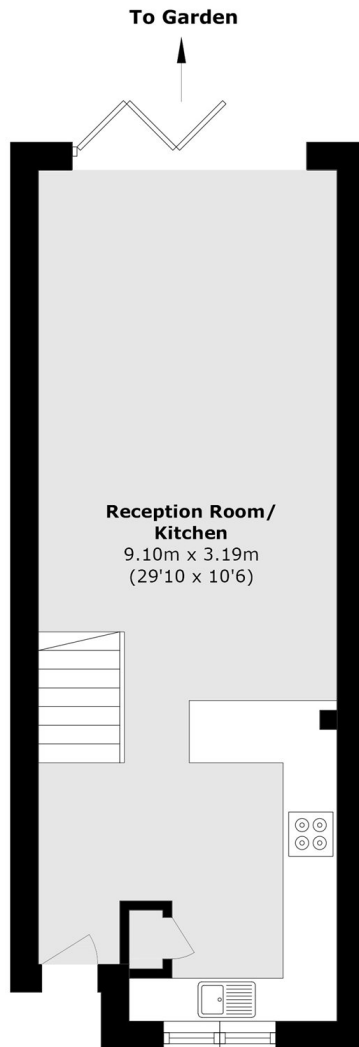


## Point Hill, SE10

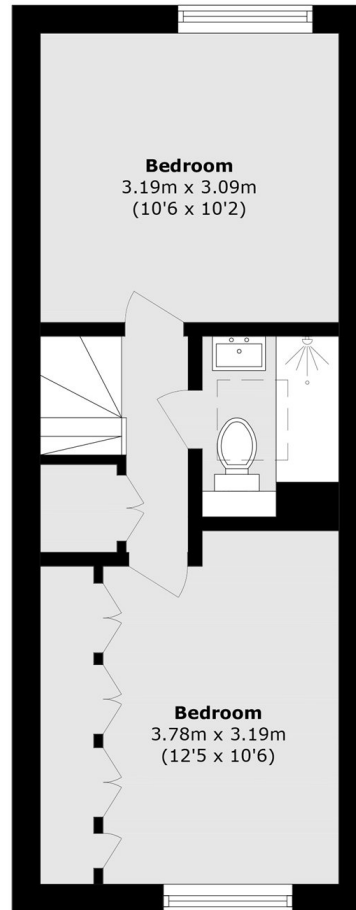
Point Hill is one of Greenwich's most desirable residential roads, perfectly positioned between the open green spaces of Greenwich Park and the vibrant amenities of Greenwich town centre. This highly sought-after location offers a unique blend of tranquillity and convenience, with an array of independent cafés, restaurants, pubs, and boutique shops all within easy reach. The area is exceptionally well connected, with Maze Hill and Greenwich stations providing direct links into Central London, Canary Wharf, and beyond via National Rail and DLR services.



Point Hill,  
London, SE10



**Ground Floor**



**First Floor**

Total area (approx.): 57.4 sq. m (617.8 sq. ft)