



King Henrys Walk

Newington Green, N1

Offers in excess of £450,000

A fantastic spacious one double bedroom garden apartment set on the lower ground floor of an imposing Victorian building and benefitting from a private South facing garden.

CHESTERTONS



King Henrys Walk

Newington Green, N1

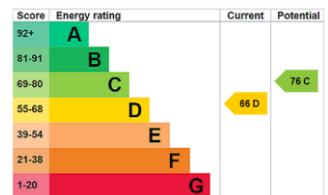
- One double bedroom garden apartment
- Open-plan kitchen/living space
- Private large South facing garden
- Quiet location
- Close proximity to amenities and transport links



A fantastic spacious one double bedroom garden apartment set on the lower ground floor of an imposing Victorian building and benefitting from a private South facing garden. The property is well-proportioned comprising; one double bedroom; bathroom with bath and over-head shower; open-plan kitchen/living space opening up to the impressive South facing private garden and offering the perfect place for summer entertaining. Having recently been introduced to Islington's low traffic neighbourhood scheme, King Henrys Walk is a quiet road set within close proximity to Newington Green, Dalston, De Beauvoir and Islington. Kingsland Road is within walking distance, offering plenty of bars, restaurants and shops. The greenery of Clissold Park and London Fields are close. Dalston Junction and Kingsland Road stations are a short walk away, providing transport links to the East and West of London. Buses run regularly to London Bridge and the City.

Tenure: Leasehold 109 years 11 months
Service Charge: £2437
Ground Rent: £300 Rising to £600 in 2036
 £1,200 in 2061
 £2,400 in 2086
 £4,800 in for the residue of the term

Local Authority: (1068) Islington Council
Council Tax Band: D

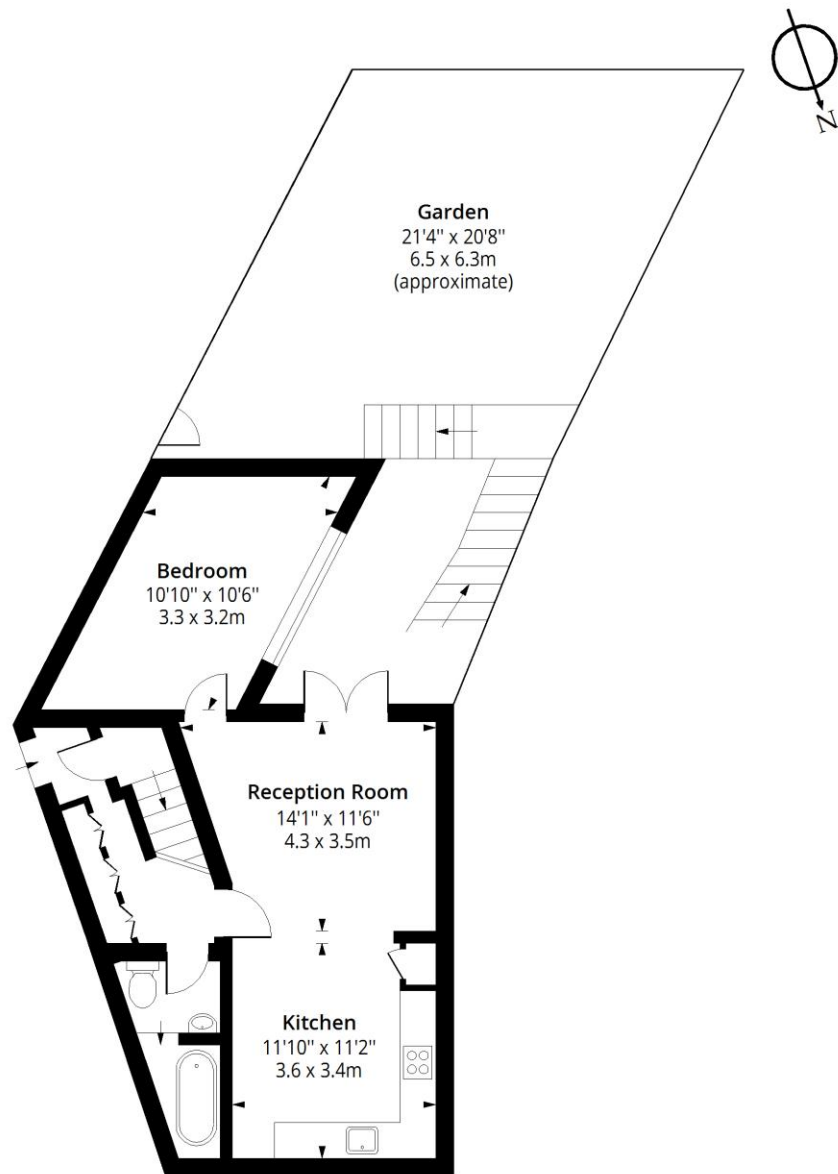


Chestertons Islington Sales

327-329 Upper Street
 Islington
 London
 N1 2XQ
 islington@chestertons.co.uk
 020 7359 9777
 chestertons.co.uk

King Henry's Walk, N1

Approx. Gross Internal Area 578 Sq Ft - 53.70 Sq M



Lower Ground Floor
Floor Area 578 Sq Ft - 53.70 Sq M

Floor plan is for illustrative purposes only and is not to scale. Every attempt has been made to ensure the accuracy of the floor plan shown, however all measurements, fixtures, fittings and data shown are an approximate interpretation for illustrative purposes only.

lplus.com

