



**POOLE  
TOWNSEND**

# Lightburn Road, Ulverston

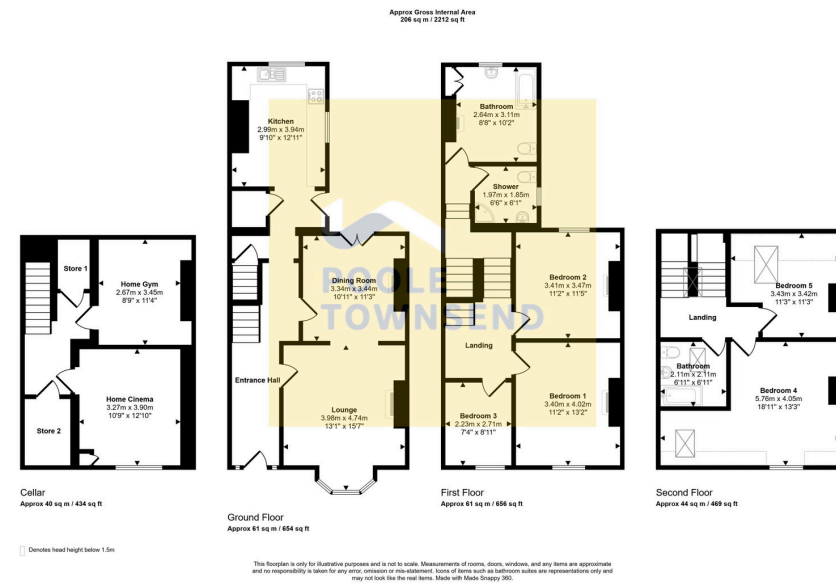
£425,000

🛏 5 🚿 2 🚗 2

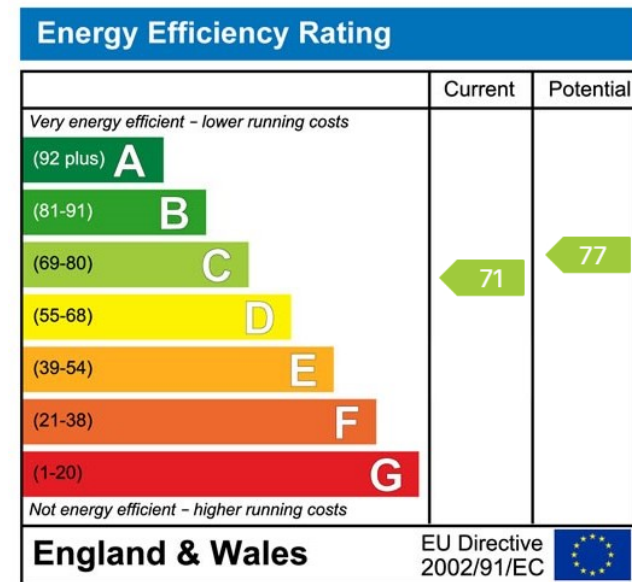


- Fantastic Home With Generous Proportions
- Sought After Town Centre Location
- 5 Double Bedrooms
- Sunny Private Garden
- Close To Local Amenities
- Bright Modern Living Spaces
- No Upper Chain
- 2 Bathrooms
- Freehold
- Walking Distance To Transport Links





**\*CHAIN FREE\*** A striking town house in the heart of Ulverston, this elegant home blends period charm with modern living and is perfectly positioned close to transport links, schools, shops, cafés, and restaurants. Set behind a lawned garden with decorative railings, it features a grand entrance hall, bay-fronted lounge, dining room with garden access, and a stylish kitchen with dual-aspect windows and integrated appliances. The fully converted basement offers a home cinema, gym space, and storage, while five double bedrooms across split levels are complemented by three bathrooms. With an enclosed, low-maintenance rear garden and a wealth of character throughout, this property offers a rare opportunity to secure a versatile and stylish family home in a prime central location.



Visit us at  
[www.pooletownsend.co.uk](http://www.pooletownsend.co.uk)  
[enquiries@pooletownsend.co.uk](mailto:enquiries@pooletownsend.co.uk)

We are open  
 Monday – Friday 9.00 – 5.00  
 Saturday 9.00 – 1.00

Barrow 01229 811811  
 Ulverston 01229 588111  
 Grange 015395 33316  
 Kendal 01539 734455  
 Milnthorpe 015395 62044