

# Colin Dean Residential

in partnership with Dexters



## Oxford Road, HA1

£2,500 pcm

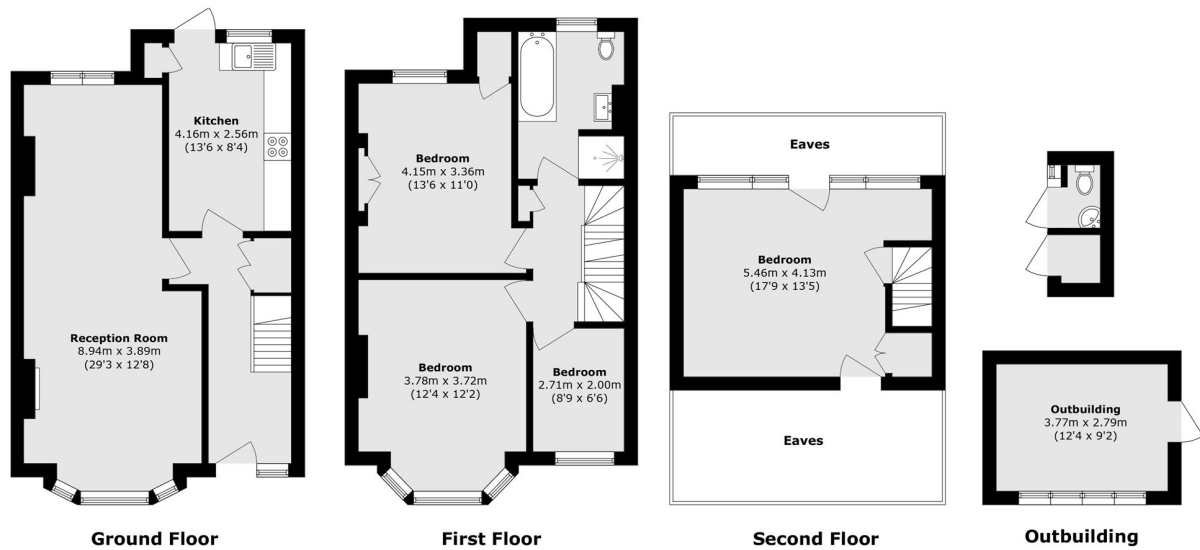
This spacious and well-presented four-bedroom semi-detached home offers versatile and comfortable living across three floors. The property features a bright and airy reception room, a well-appointed separate kitchen with integrated appliances, and direct access to a beautifully maintained private garden. The home is perfectly suited for families seeking comfort, convenience, and tranquillity in a sought-after location. Energy Rating: E.

Located on a quiet residential street with nearby shops, bus routes, and well-regarded schools, the home is also within easy reach of West Harrow station, approximately 0.5 miles away, providing direct access into central London.

- Four Bedrooms • Large Living Room • Separate Dining Room •
- Modern Fitted Kitchen • Private Garden • Central Location •

# Colin Dean Residential

in partnership with Dexters



Total area (approx.): 128.8 sq. m (1386.4 sq. ft)  
Outbuilding area (approx.): 12.7 sq. m (136.7 sq. ft)  
(Excluding Eaves)

Colin Dean Residential  
350 Pinner Road,  
Harrow, HA1 4LB  
020 8515 7929  
daniel.murray@colindean.com

Energy Rating: E We aim to make our particulars both accurate and reliable. However they are not guaranteed; nor do they form part of an offer or contract. If you require clarification on any points then please contact us, especially if you're travelling some distance to view. Please note that appliances and heating systems have not been tested and therefore no warranties can be given as to their good working order.