



## Orbis Wharf

Bridges Court Road | Battersea | SW11

Guide price £1,400,000

**MASON  
& VALE**  
PROPERTY

# Orbis Wharf

Bridges Court Road |

London | SW11

Guide price £1,400,000

Two bedrooms, two bathrooms, open plan kitchen reception room and fabulous roof terrace with river views.

- Large roof terrace
- 24 hour concierge
- Riverside location
- Fantastic river views
- Allocated parking spaces available via negotiation
- Thames Uber Riverboat moments away





The living area has a westerly aspect with floor-to-ceiling windows offering views across the roof terrace to the river Thames. There is ample space for separate living and dining areas with a fully fitted modern kitchen. The principal bedroom also offers access to the terrace along with having built-in wardrobes and an en suite bathroom.

There is a generous sized second bedroom also with floor-to-ceiling windows with guest bathroom.

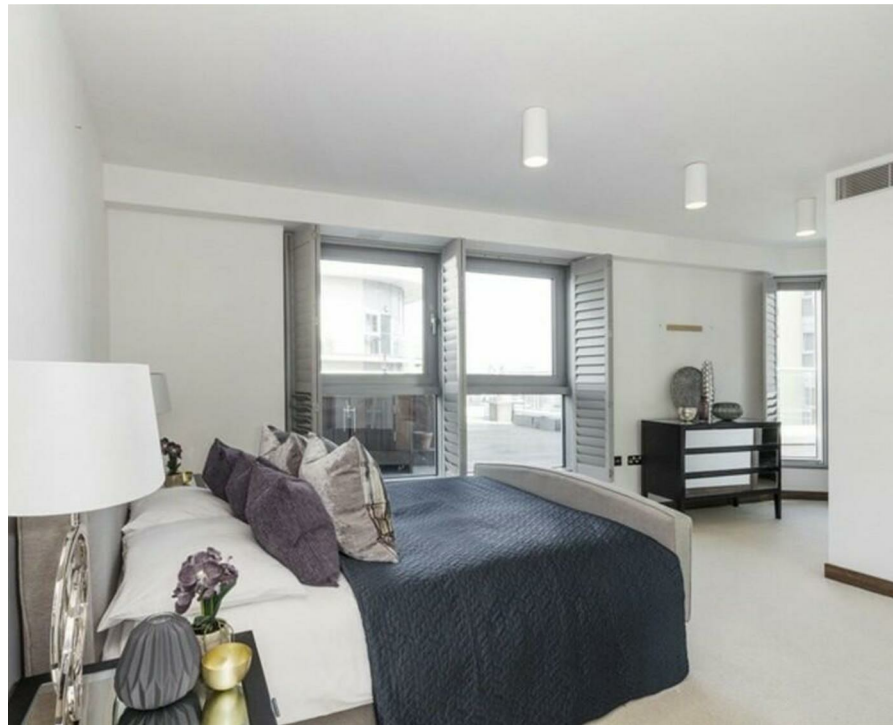
An award-winning riverside development set along the south bank of the Thames, Bridges Wharf offers stylish contemporary living on the waterfront. The development is complemented by landscaped communal gardens, concierge services and a secure underground parking space is available via separate negotiation.

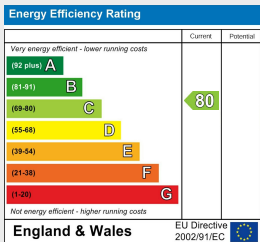


Ideally positioned for connectivity, Clapham Junction provides fast links to Victoria, Waterloo and the City, while nearby riverboat services offer an alternative and efficient commute.



Residents benefit from easy access to Battersea Square, Wandsworth Town and the open green spaces of Battersea Park, with the Thames Path on the doorstep. Bridges Wharf combines refined riverside living with excellent transport links and a vibrant local lifestyle.





EPC Rating C  
Council Tax Band G

+44 (0)20 7856 0313  
sales@masonandvale.co.uk  
www.masonandvale.co.uk