



Lanchester Way, SW11

£4,000 Per calendar month

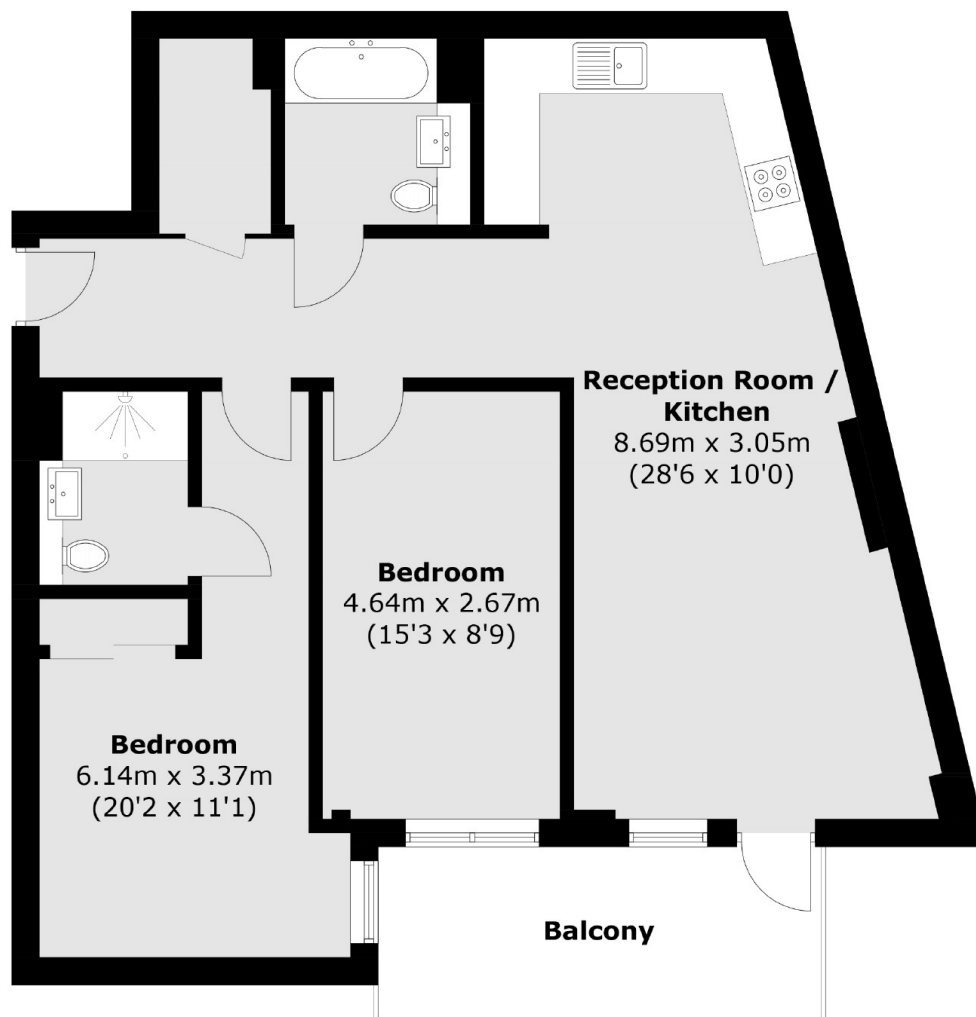
A luxury two bedroom apartment located in the sought after Nine Elms Development, This stunning property offers a open-plan kitchen/reception room, two double bedrooms, two modern bathroom and s a private balcony. Additional benefits include an on-site concierge, study spaces, a residents' gym, and cinema.

Senate building is a new luxury development, which includes 24 hour concierge, gym and a stunning communal roof terrace. The newly completed Nine Elms Underground (Northern Line) is just a short walk away.

Features

- Two Double Bedrooms
- Two Modern Bathrooms
- Eat-In Kitchen
- High Specification
- On-Site Concierge
- Residents Gym

Lanchester Way, London, SW11



Total area (approx.): 77.6 sq. m (835.2 sq. ft)
Balcony area : 8.9 sq. m (95.7 sq. ft)