



Broomhouse Lane, SW6

£450,000

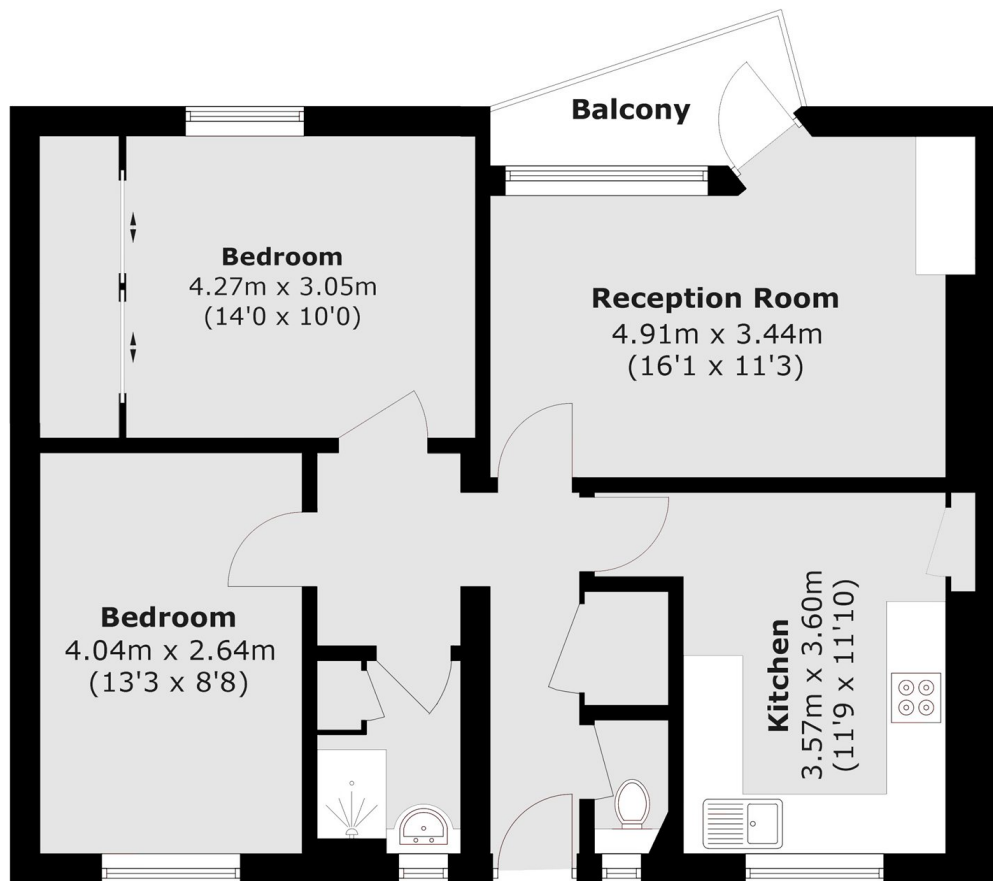
A beautifully-presented, purpose-built flat comprising two double bedrooms in the heart of Parsons Green. The property features a separate kitchen, a spacious reception room with access to a private balcony, and a contemporary family bathroom.

Ideally situated between Hurlingham Park and South Park, as well as being a short walk away from the amenities and transport links of Parsons Green.

Features

- Two Double Bedrooms
- Private Balcony
- Separate Kitchen
- Family Bathroom
- Moments from Parsons Green
- Close to Transport Links

Broomhouse Lane, London, SW6



Fifth Floor

Total area (approx.): 66.7 sq. m (717.9 sq. ft)
Balcony (approx.): 3.0 sq. m (32.3 sq. ft)