



21 Thomas Steet South

Ryhope
Sunderland
SR2 0PD

£700 pcm

Two Bedrooms
Mid Terraced Cottage
Gas Central Heating & Double Glazing
Yard to Rear
Available Immediately
Viewing Recommended
Close To Local Amenities & Transport





Safe and Secure welcome to the market this Two Bedroom Mid Terraced Cottage in the sought after area of Thomas Street South, Ryhope. This spacious home benefits from gas central heating, double glazing and yard to rear, with the added benefit of loft space which could be used as the second bedroom.

Close to local amenities and transport links, the property would suit a wide variety of tenants. Available now, viewings are recommended.

ENTRANCE HALL

Double glazed entrance door, radiator.

LOUNGE

15' 7" x 13' 6" (4.77m x 4.14m) Double glazed window to front, marble effect fireplace with inset and hearth, two radiators, stairs to first floor.

KITCHEN

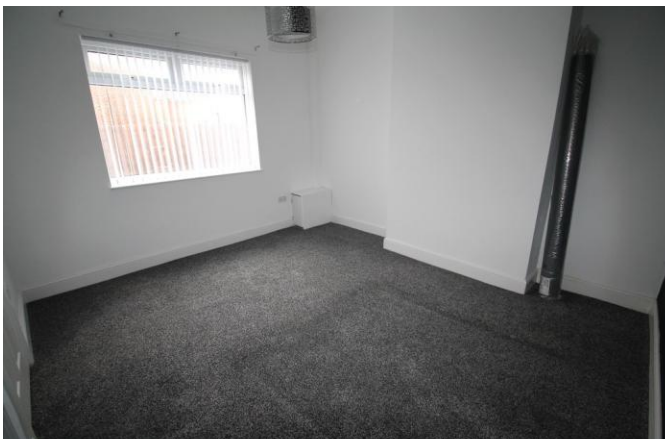
16' 11" x 7' 9" (5.16m x 2.37m) Fitted with a range of wall & base units with coordinating work surfaces over, 1 1/2 bowl sink unit, electric cooker point, space for washing machine, combination boiler, radiator, double glazed window and door to rear yard.

MASTER BEDROOM

13' 10" x 12' 2" (4.23m x 3.72m) Double glazed window to front, coving to ceiling, radiator.

BEDROOM 2

14' 2" x 16' 4" (4.32m x 4.98m) Velux style window,



built in storage cupboard, radiator.

BATHROOM

White 3 piece suite comprising of a panelled bath with shower over, pedestal wash hand basin and low level w.c, tiled walls, radiator, double glazed window to rear.

REAR YARD

Fenced boundaries with outbuilding for storage.



Local Authority
Council Tax Band
EPC Rating

Sunderland City Council

A

E

Houghton Le Spring

24-25 Westbourne Terrace
Houghton Le Spring
Tyne And Wear
DH4 4QT

Contact

0191 3854477
info@safeandsecureproperties.c
o.uk
safeandsecureproperties.co.uk

Agents Note: Whilst every care has been taken to prepare these particulars, they are for guidance purposes only. All measurements are approximate and are for general guidance purposes only and whilst every care has been taken to ensure their accuracy, they should not be relied upon and potential buyers/tenants are advised to recheck the measurements.