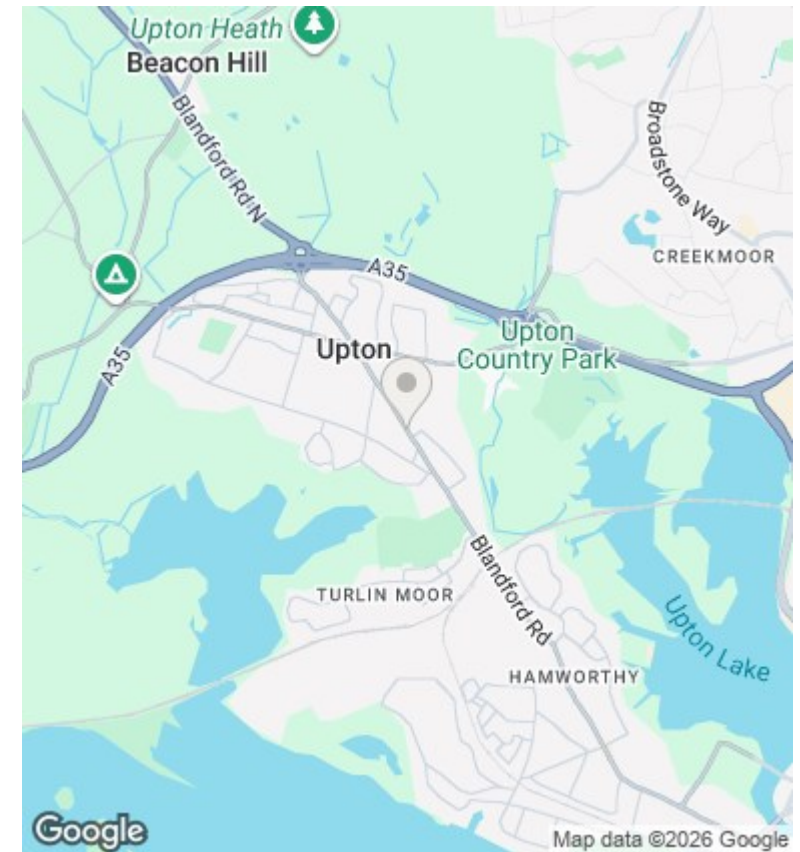
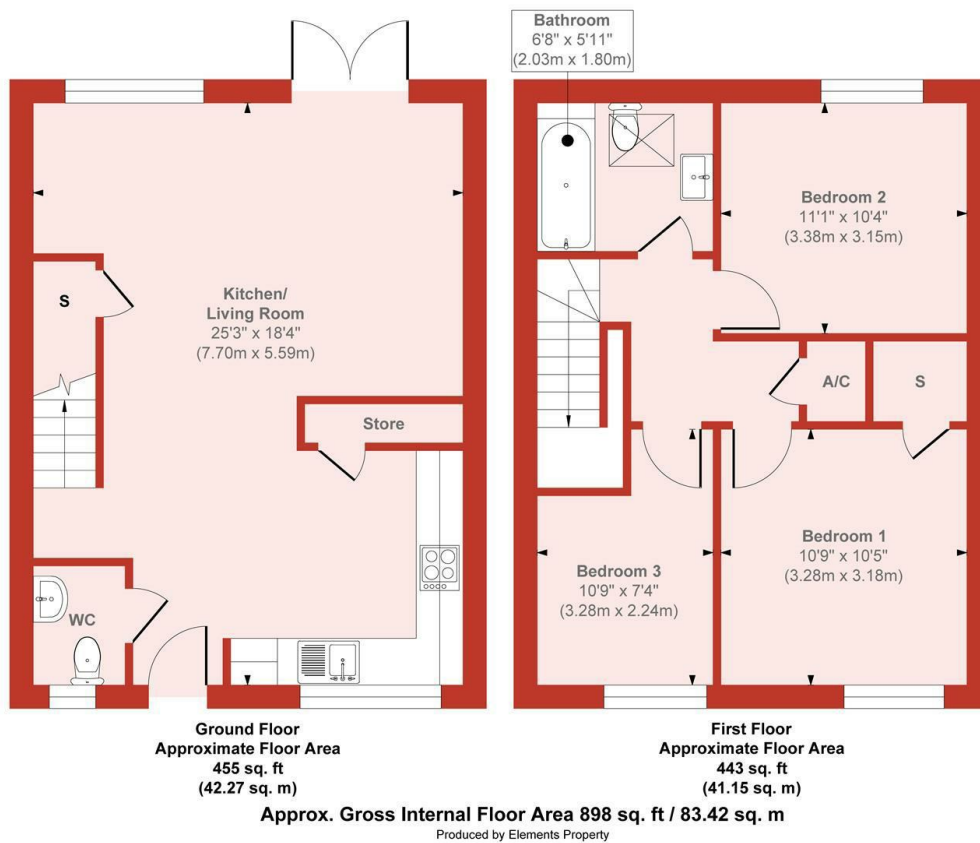




## 635B Blandford Road, Upton, Poole, Dorset, BH16 5ED

£335,000

- Three Bedrooms
- Immaculate Terraced House
- Beautifully Presented
- No Chain!
- Modern Development
- Open Plan Living
- Lovely Garden
- Parking For Two Cars
- Gas Central Heating
- Deceptively Spacious



## Directions

## Viewings

Viewings by arrangement only. Call 01202 622101 to make an appointment.

## Council Tax Band

## EPC Rating:

B

Energy Efficiency Rating		
	Current	Potential
Very energy efficient - lower running costs		
(92 plus) <b>A</b>		
(81-91) <b>B</b>	89	90
(69-80) <b>C</b>		
(55-68) <b>D</b>		
(39-54) <b>E</b>		
(21-38) <b>F</b>		
(1-20) <b>G</b>		
Not energy efficient - higher running costs		
<b>England &amp; Wales</b>	EU Directive 2002/91/EC	