



## HUGUENOT PLACE, SW18

£625,000

- Victorian ground floor flat
- High specification interior
- Share of freehold
- Two double bedrooms
- Sought after location
- Energy rating: D





## ABOUT THE HOME

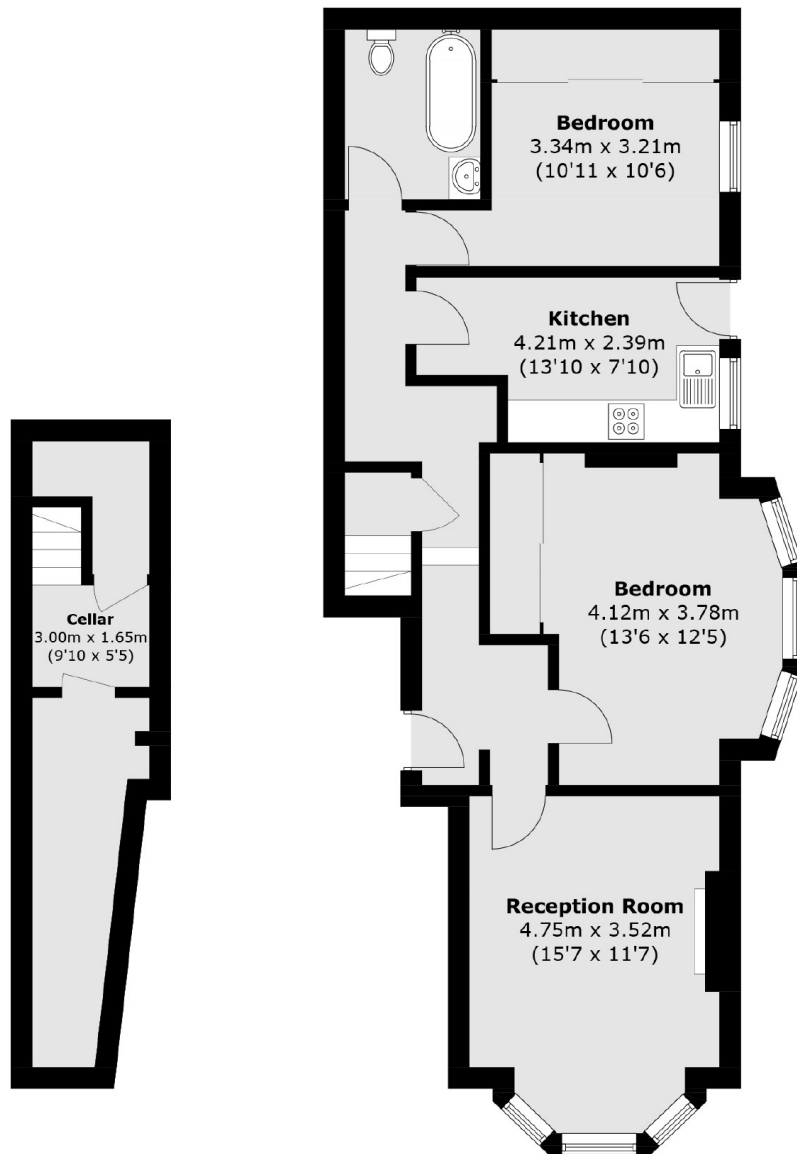
A beautifully designed, two double bedroom, ground floor flat in a sought after Wandsworth location.

This property can be accessed via it's own front door as well as through a well kept communal entrance. Accommodation comprises; a bright and spacious reception room with an abundance of period features including a feature fireplace, incredibly high ceilings and intricate cornicing. There are two generous double bedrooms both benefitting from an abundance of natural light and built in wardrobes. The bathroom and kitchen are both finished to an exceptionally high specification and the property enjoys direct access to a West-facing, shared, patio garden. There is a cellar which is extremely useful for additional storage space.

The property is located 0.1 Miles from the expansive Wandsworth Common, offering ample green spaces with a variety of amenities ideal for families. Transport links are exceptional, with Wandsworth Town station approximately 0.3 miles away and Clapham Junction station 0.6 miles away, all providing regular services to London Victoria and Waterloo.





**Basement****Ground Floor**

Total area (approx.): 84.5 sq. m (909.4 sq. ft)  
(Including Cellar)

**JACKSONS EARLSFIELD**

372-374 Garratt Lane,  
Earlsfield, London, SW18 4ES  
Sales: 020 8971 7979  
Lettings: 020 8971 7070

Energy Rating: D We aim to make our particulars both accurate and reliable. However they are not guaranteed; nor do they form part of an offer or contract. If you require clarification on any points then please contact us, especially if you're traveling some distance to view. Please note that appliances and heating systems have not been tested and therefore no warranties can be given as to their good working order.