

Hounslow Road, TW2

£575,000

This wonderful 1930's three bedroom end of terrace house could be a fantastic family home for years to come as it benefits from having two receptions, planning permission in place already to extend and a large private garden with a newly built home office/studio at the end.

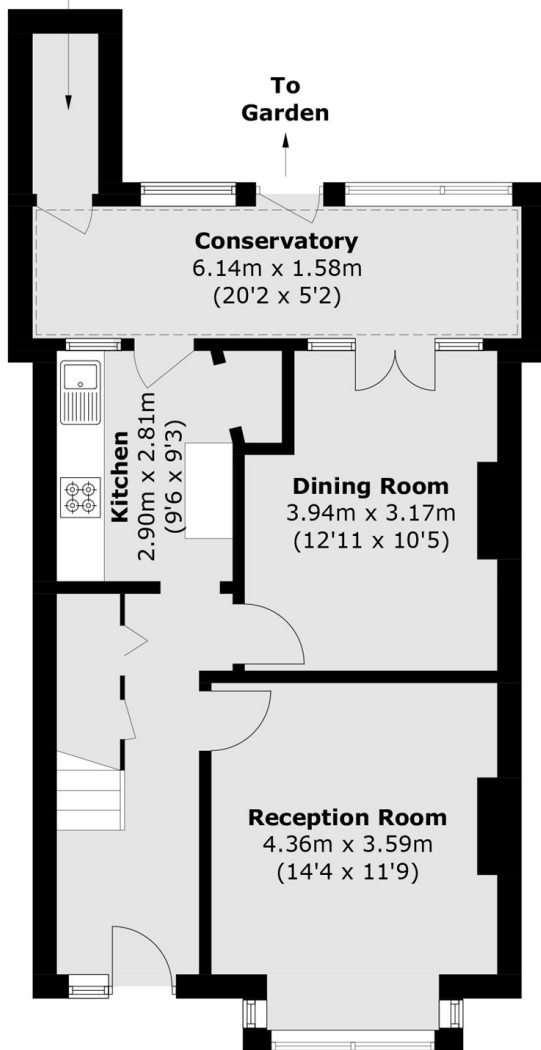
Hounslow Road is situated next to Whitton high street where you will find a vast array of shops, restaurants and cafés. For those who need a fast link to Waterloo you can access via Whitton or Twickenham mainline stations and the Piccadilly line at Hounslow central is also close by.

Features

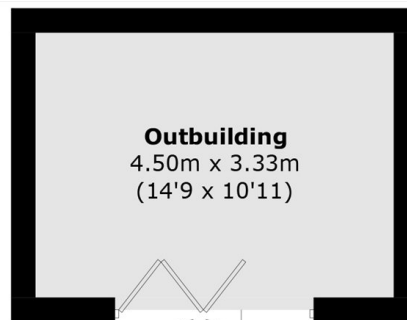
- Planning Permission In Place
- Potential To Extend
- Large Private Garden
- Garden Office/Studio
- Central Location
- Rear Access

Hounslow Road, Whitton, TW2

Outbuilding
1.95m x 0.83m
(6'5 x 2'9)

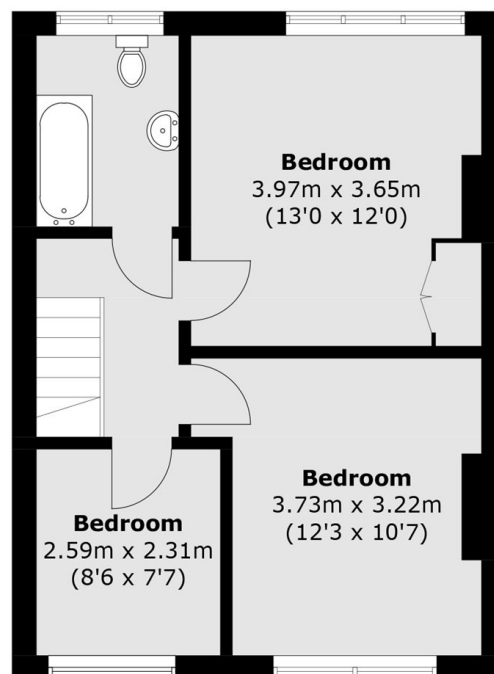


Ground Floor



Outbuilding
4.50m x 3.33m
(14'9 x 10'11)

To Garden
(Not Shown In Actual
Location / Orientation)



First Floor

Approx Internal Area: 101.4 sq. m (1,091.4 sq. ft)
Outbuilding: 15.4 sq. m (165.8 sq. ft)