



Olive

ESTATE AGENTS



Leaze Farm Wharfside, Lympsham, Somerset BS24 0EZ £695,000

*** NOW DROPPED £100,000, WHAT AN ABSOLUTE BARGAIN!!!! *** APPROXIMATELY 3/4 ACRE OF GROUND WITH THIS ABSOLUTELY BEAUTIFUL, COMPLETELY RENOVATED FARMHOUSE *** FINISHED TO A VERY HIGH STANDARD WITH NEFF APPLIANCES IN THE KITCHEN, ALONG WITH A BOILING WATER TAP *** LARGE LIVING ROOM WITH LOG BURNER *** LARGE SITTING ROOM / PLAY ROOM *** UTILITY ROOM & CLOAKROOM *** FOUR FABULOUS BEDROOMS *** LARGE MASTER EN-SUITE & FAMILY BATHROOM *** FABULOUS BRICK OUTBUILDINGS RIPE FOR CONVERSION (SUBJECT TO THE NECESSARY PLANNING CONSENTS) *** THREE SEPARATE, LARGE TIN OUTBUILDINGS / BARNs *** FABULOUS SURROUNDING GROUNDS & AMPLE OFF STREET PARKING *** COUNCIL TAX BAND E *** EPC D *** FREEHOLD ***



Floor 0 Building 1



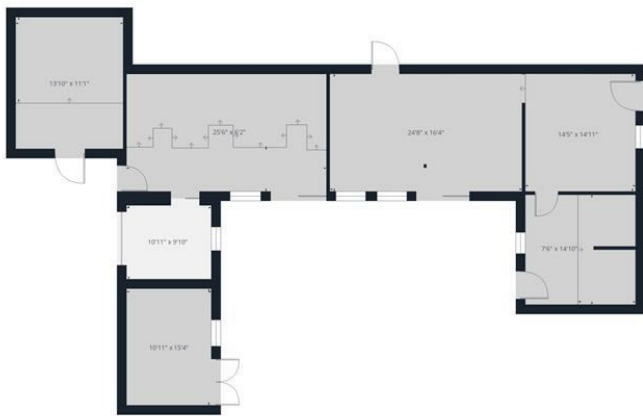
Floor 1 Building 1

Approximate total area⁽¹⁾
4218 ft²

(1) Excluding balconies and terraces

Calculations reference the RICS IPMS 3C standard. Measurements are approximate and not to scale. This floor plan is intended for illustration only.

GIRAFFE360



Floor 0 Building 2



Floor 0 Building 4

