



Chalfont Close, Northwick, Worcester

Guide price £240,000



Key Features

- 3 Bedroom Terraced House
- Cul de sac location
- Garage
- Driveway (off road parking)
- Modern Kitchen
- Bright open plan living / dining space
- EPC rating D
- Freehold





This three-bedroom terraced house is offered for sale in the popular residential area of Northwick, Worcester. The property is in good condition and benefits from gas central heating and double glazing, with an EPC rating of D and Council Tax Band B, making it an appealing option for first-time buyers, families and investors.

The ground floor comprises an entrance hall, a kitchen with natural light, and an open-plan reception room with large windows and direct access to the rear garden. On the first floor there are three bedrooms: two doubles, one of which includes built-in wardrobes, and a single bedroom also featuring built-in wardrobes. The family bathroom includes a shower over the bath and a heated towel rail. Outside, the property offers both front and rear gardens, driveway parking and a single garage.

Northwick is well regarded for its local amenities, with shops, a pharmacy, Post Office and supermarket all within easy walking distance. Nearby green spaces and riverside walking routes along the River Severn provide opportunities for leisure and exercise. The area is served by

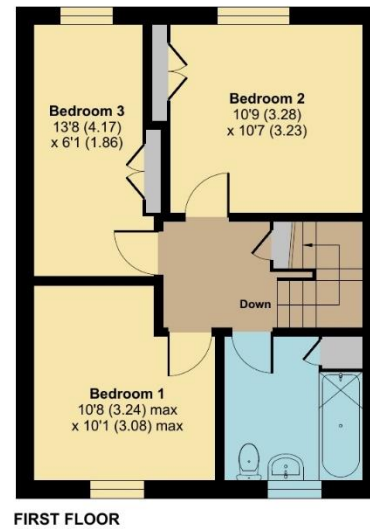
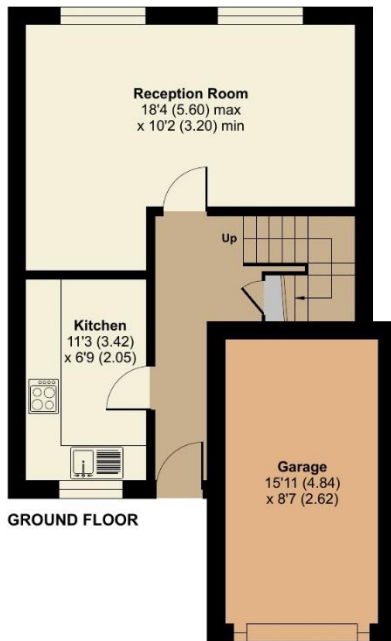
nearby schools, which adds to its appeal for families.

Public transport connections are available via Worcester city's rail stations, including Worcester Foregate Street, offering services towards Birmingham and London, with journey times to Birmingham typically around 40-50 minutes. Local bus routes provide access into Worcester city centre for wider shopping, dining and cultural facilities.

Chalfont Close, Worcester, WR3

Approximate Area = 861 sq ft / 80 sq m
Garage = 136 sq ft / 12.6 sq m
Total = 997 sq ft / 92.6 sq m

For identification only - Not to scale



Floor plan produced in accordance with RICS Property Measurement 2nd Edition, incorporating International Property Measurement Standards (IPMS2 Residential). © nichecom 2026. Produced for Northwood. REF: 1442060


northwood

01905 330 530

worcester@northwooduk.com