



Redland Close, STOCKTON-ON-TEES TS18 5PY

welcome to

Redland Close, STOCKTON-ON-TEES

An impressive three-bedroom semi-detached home in a hugely popular area of Stockton-on-Tees. Beautifully maintained and upgraded, featuring a stylish kitchen/diner extension, a welcoming lounge with oak and glass staircase, three well-proportioned bedrooms, a great rear garden and driveway.

Entrance Porch

Composite door to front, radiator, window to side

Lounge

16' 11" x 13' 5" (5.16m x 4.09m)

Bay window to front, two radiators, understairs cupboard, oak staircase, door to kitchen

Dining Room

9' 6" x 7' 10" (2.90m x 2.39m)

Bi-fold doors to rear, two windows to side, spotlights, remote controlled skylights

Kitchen

16' 10" max x 12' 6" max (5.13m max x 3.81m max)

Range of wall and base units, recess for oven with extractor fan, sink, breakfast bar, boiler, window to rear, tall radiator, underfloor heating

Landing

Window to side

Bedroom 1

12' 1" max x 12' 2" max (3.68m max x 3.71m max)

Loft access, window to front, radiator

Bedroom 2

10' 4" max x 12' 2" max (3.15m max x 3.71m max)

Window to rear, radiator, built-in cupboard over stairs

Bedroom 3

6' 9" x 7' 7" (2.06m x 2.31m)

Window to front, radiator

Bathroom

Window to rear, low level WC, wash hand basin with mixer tap, bath with shower unit, spotlights

Rear Garden

Block paved, detached garage, patio, laid to lawn, enclosed by fence





view this property online mannersandharrison.co.uk/Property/STO115682



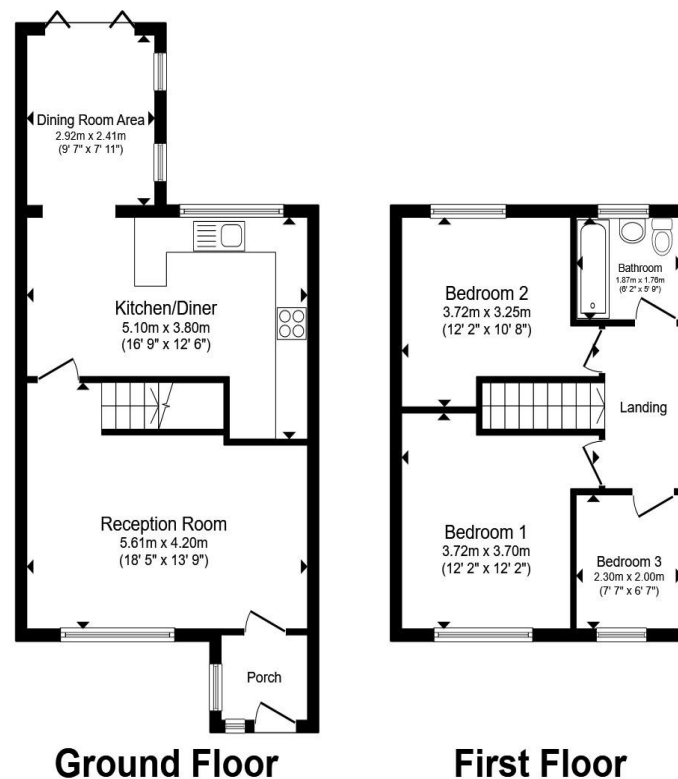
welcome to

Redland Close, STOCKTON-ON-TEES

- OFF-STREET PARKING
- GARAGE
- REAR GARDEN
- THREE BEDROOMS
- SEMI-DETACHED

Tenure: Freehold EPC Rating: C
Council Tax Band: B

£185,000



Total floor area 84.5 m² (910 sq.ft.) approx

This floor plan is for illustrative purposes only. It is not drawn to scale. Any measurements, floor areas (including any total floor area), openings and orientation are approximate. No details are guaranteed, they cannot be relied upon for any purpose and they do not form part of any agreement. No liability is taken for any error, omission or misstatement. A party must rely upon its own inspection(s). Powered by www.propertybox.io


manners
& harrison

view this property online mannersandharrison.co.uk/Property/STO115682



Property Ref:
STO115682 - 0008

1. MONEY LAUNDERING REGULATIONS Intending purchasers will be asked to produce identification documentation at a later stage and we would ask for your co-operation in order that there is no delay in agreeing the sale. 2. These particulars do not constitute part or all of an offer or contract. 3. The measurements indicated are supplied for guidance only and as such must be considered incorrect. Potential buyers are advised to recheck measurements before committing to any expense. 4. We have not tested any apparatus, equipment, fixtures or services and it is in the buyers interest to check the working condition of any appliances. 5. Where an EPC, or a Home Report (Scotland only) is held for this property, it is available for inspection at the branch by appointment. If you require a printed version of a Home Report, you will need to pay a reasonable production charge reflecting printing and other costs. 6. We are not able to offer an opinion either written or verbal on the content of these reports and this must be obtained from your legal representative. 7. Whilst we take care in preparing these reports, a buyer should ensure that his/her legal representative confirms as soon as possible all matters relating to title including the extent and boundaries of the property and other important matters before exchange of contracts.

Manners & Harrison is a trading name of Sequence (UK) Limited which is registered in England and Wales under company number 4268443, Registered Office is Cumbria House, 16-20 Hockliffe Street, Leighton Buzzard, Bedfordshire, LU7 1GN. VAT Registration Number is 500 2481 05.


manners & harrison



01642 606161



Stockton@mannersandharrison.co.uk



23 High Street, STOCKTON-ON-TEES,
Cleveland, TS18 1SP



mannersandharrison.co.uk