



Belmont Terrace, Thurgoland, S35 7AD

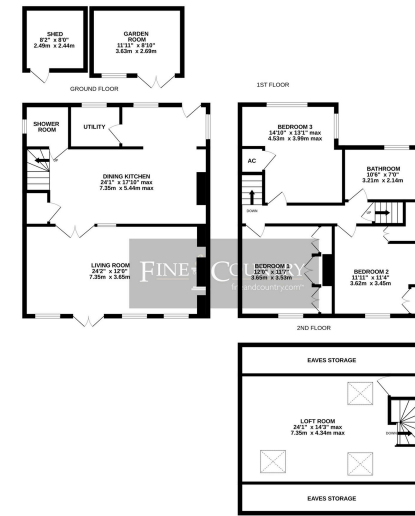
£525,000

🛏️ 4 🚿 2 🚗 2



- Stunning Cottage
- Spacious Accommodation
- Retained Period Features
- Off Road Parking
- 3 Double Bedrooms, 2 Bathrooms & Attic Room
- Sympathetically Modernised
- Amazing Open Plan Living Kitchen
- Enclosed Gardens
- Home Office





Whilst every attempt has been made to ensure the accuracy of the floorplan contained herein, measurements of doors, windows, rooms, and any other items are approximate and no responsibility is taken for any errors, omissions or misstatements. This plan is for illustrative purposes only and should be used as a guide to only prospective purchasers. The architect, designers and any other persons have not been asked to guarantee the accuracy of the floorplan. Measurements are given in metres and feet and inches. Measurements are given to the nearest millimetre and inches to the nearest 1/8".

A truly charming stone-built cottage, rich in character and beautifully enhanced through sympathetic modernisation, seamlessly blending original period features with high-quality contemporary finishes to create an exceptional home.

Score	Energy rating	Current	Potential
92+	A		
81-91	B		
69-80	C	73 C	79 C
55-68	D		
39-54	E		
21-38	F		
1-20	G		

House 42, Locke, 44 Shambles St,
Barnsley S70 2SH
Tel: +44 (0)01226 729009
barnsley@fineandcountry.com

Unit 2 Former Council Offices, Eastgate
Honley, Holmfirth HD9 6PA
Tel: +44 (0)1484 550620
huddersfield@fineandcountry.com

The Balance Floor 7, 2 Pinfold Street
Sheffield, South Yorkshire S1 2GU
Tel: +44 (0)114 404 0044
sheffield@fineandcountry.com