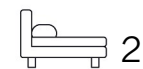




Living
made
better

Defoe House
London City Island, E14 0TX



Offers In Excess Of £625,000

Defoe House, London City Island E14 0TX

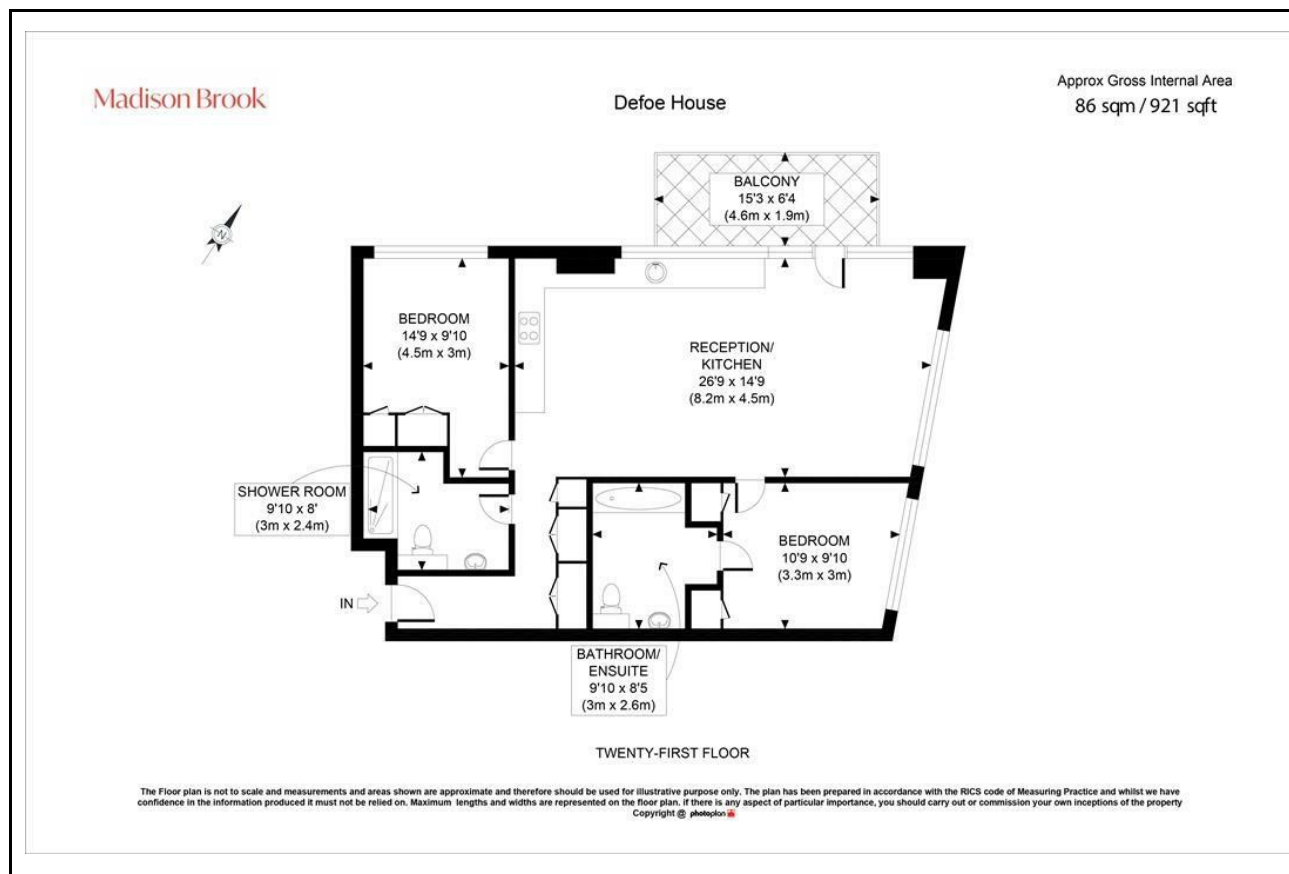
Madison Brook

Property Summary

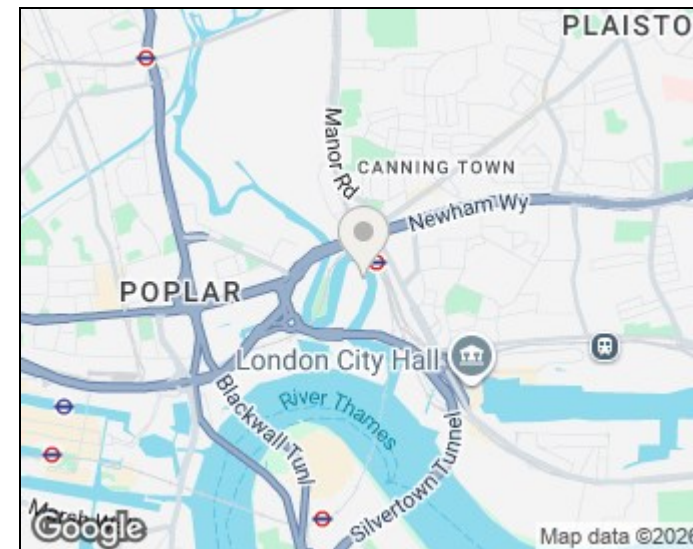
Located on the 21st floor of the iconic Defoe House in London City Island, this stylish two-bedroom apartment offers 844 sq. ft. of internal space and a private balcony with panoramic north-easterly views across The City and River Lea. Designed with a warehouse-inspired aesthetic, the property features a bright, open-plan living space, modern integrated kitchen, two generous bedrooms, one with en-suite, and a contemporary family bathroom.

The development is ideally located within walking distance of Canning Town (Jubilee & DLR) and East India stations.

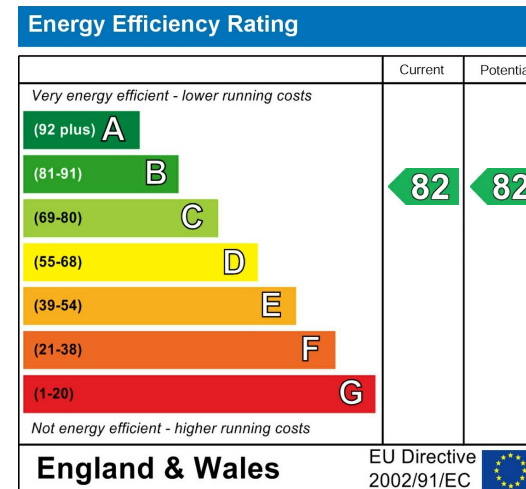
Floorplan



Area Map



Energy Efficiency Graph



These particulars, whilst believed to be accurate are set out as a general outline only for guidance and do not constitute any part of an offer or contract. Intending purchasers should not rely on them as statements of representation of fact, but must satisfy themselves by inspection or otherwise as to their accuracy. No person in this firm's employment has the authority to make or give any representation or warranty in respect of the property.

Unit B 20 Western Gateway, Royal Victoria
Dock, London, E16 1BS
Tel: 020 3946 6000 Email:
docklands@madisonbrook.com
<https://madisonbrook.com/>