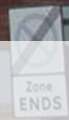




Dorchester Court, Camberley GU15 3JJ

£1,350 PCM



Luff
ASSOCIATES
letting specialists



Dorchester Court, Camberley. GU15 3JJ

£1,350 PCM

- Ground floor apartment
- Bathroom and en suite
- Open plan to kitchen
- Good size sitting/dining room
- Two double bedrooms
- Underground parking
- Close to town centre
- Larger than average for this block



Description

This two double bedroom ground floor apartment is one of the larger versions in Dorchester Court and is located within walking distance to Camberley town centre and the rail line.

The accommodation comprises an entrance hall with secure entry system, good size sitting/dining room which is also open plan to the kitchen. The master bedroom is a nice size double with en-suite shower room, further second double bedroom and the main family bathroom.

Outside there are communal grounds and secure underground parking for one car.

Part furnished and available 26th May 2026

Council tax band: D

EPC rating: C

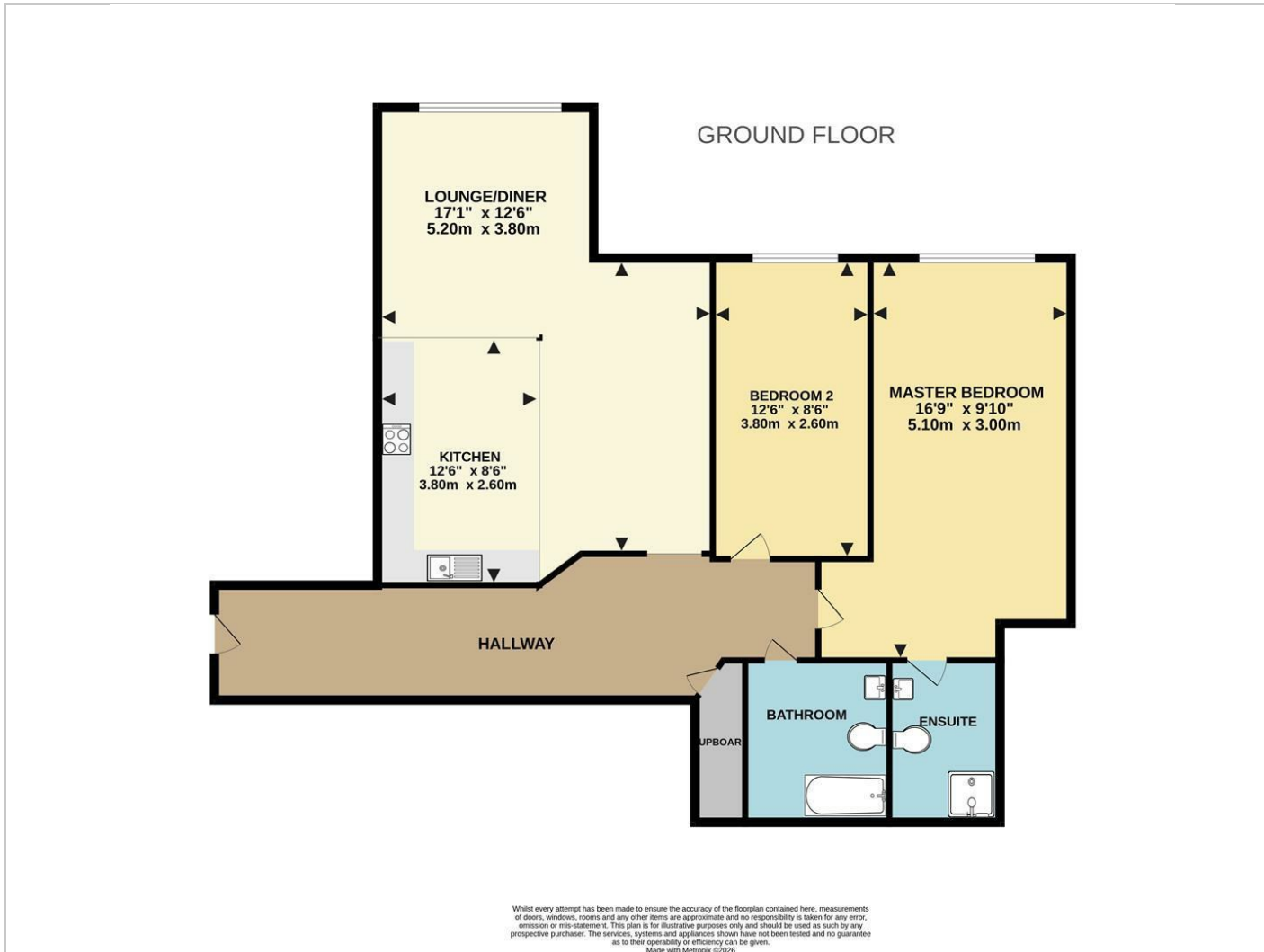
Deposit = 5 weeks rent - £1,557

First Months rent - £1350

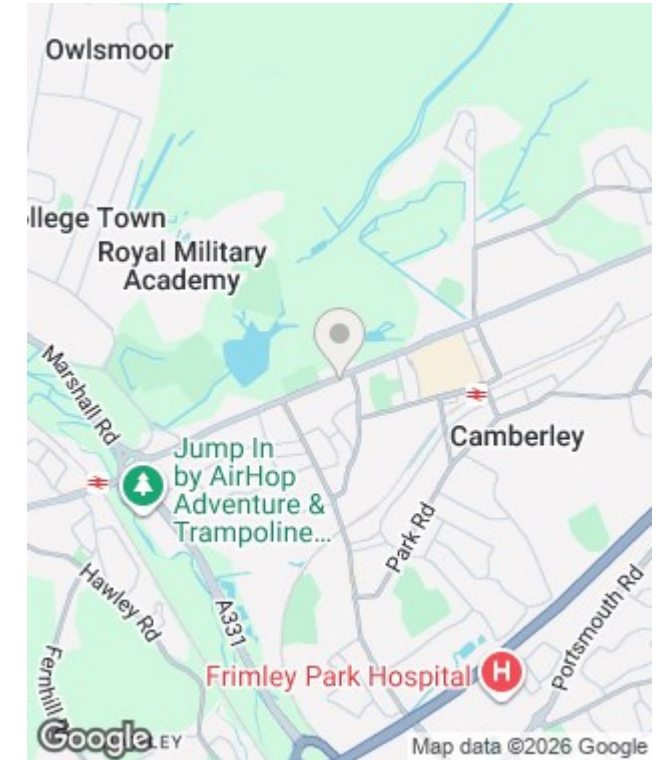
Holding deposit - £311 (will be deducted from the first months rent upon move in)



Floorplan



Area Map



Energy Efficiency Rating		Environmental Impact (CO ₂) Rating	
	Current	Potential	
Very energy efficient - lower running costs			Very environmentally friendly - lower CO ₂ emissions
(92 plus) A			(92 plus) A
(81-91) B			(81-91) B
(69-80) C			(69-80) C
(55-68) D			(55-68) D
(39-54) E			(39-54) E
(21-38) F			(21-38) F
(1-20) G			(1-20) G
Not energy efficient - higher running costs			Not environmentally friendly - higher CO ₂ emissions
England & Wales	EU Directive 2002/91/EC	75	England & Wales
		82	EU Directive 2002/91/EC



In partnership with
LUFF & WILKIN
sales 01252 838 899

Disclaimer: The Rent advertised does not include the Tenancy Deposit or any fee's or charges which are payable. Further information can be obtained from the agent or at the point of viewing. These details have been prepared and issued in good faith and do not constitute representations of fact or form part of any offer or contract Luff Associates Ltd have not carried out a structural survey of the property, nor have we tested any of the services or appliances. All measurements are intended to be approximate only and all photographs show parts of the property as they were at the time they were taken. Any reference to alterations or particular use of the property wherever stated, is not a statement that planning, building regulations or other relevant sent has been obtained