

settle.



Troubridge Square

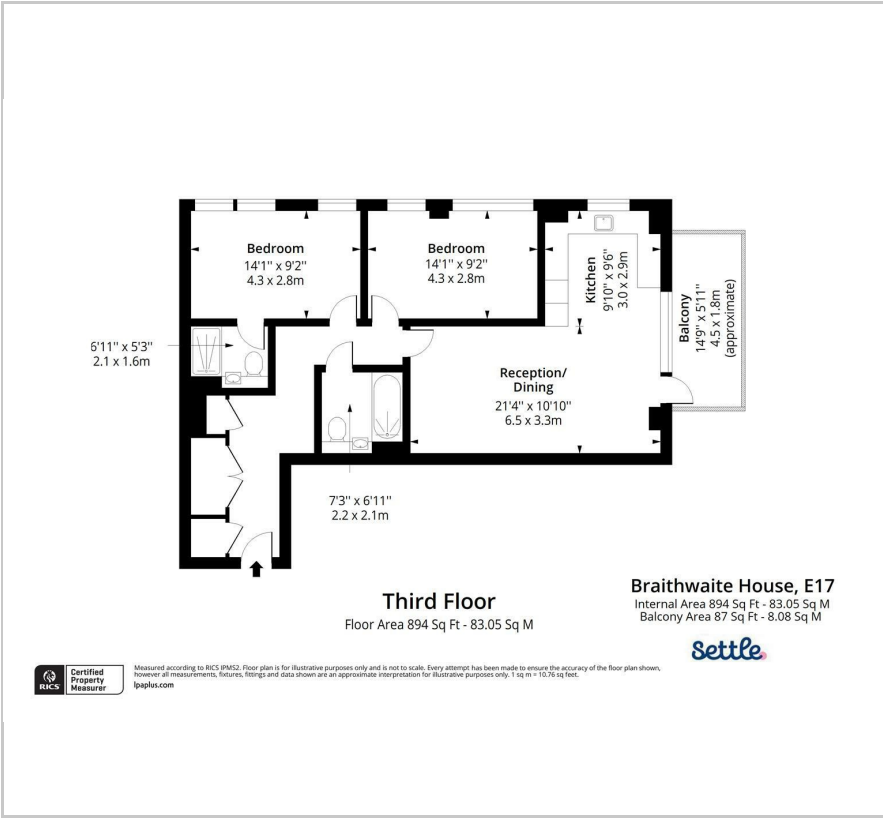
, London, E17 3GR

Offers in excess of £500,000



2 2 1 B

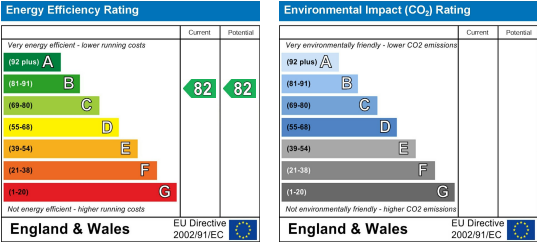
Floor Plan



Area Map



Energy Efficiency Graph



Viewing

Please contact our Settle Office on 0208 124 2522 if you wish to arrange a viewing appointment for this property or require further information.

- 0.1m To Wood Street Station
- Communal Gardens
- Popular Wood Street Location
- Bright, Open-Plan Living And Dining Area
- Private Balcony
- EPC Rating B
- Built-In Storage Throughout
- 894 Sq Ft - 83.05 Sq M



This well-presented apartment is set on the third floor of a modern, well-maintained development and offers bright, well-balanced accommodation throughout.

The property features a spacious open-plan reception and dining area, providing an excellent space for both everyday living and entertaining. The adjoining kitchen is thoughtfully arranged and fitted with contemporary units and integrated appliances, making the most of the available space.

There are two generously sized double bedrooms, both offering excellent storage potential and flexibility for use as a guest room or home office. The apartment is served by two bathrooms, including a family bathroom and an en-suite.

Further benefits include built-in storage throughout, a private balcony ideal for relaxing or dining outdoors, and a generous south facing view. The apartment is offered in good decorative order and benefits from an efficient energy rating.



These particulars, whilst believed to be accurate are set out as a general outline only for guidance and do not constitute any part of an offer or contract. Intending purchasers should not rely on them as statements of representation of fact, but must satisfy themselves by inspection or otherwise as to their accuracy. No person in this firm's employment has the authority to make or give any representation or warranty in respect of the property.