

**Location:**

The property is a 4 minute walk Acton Town (Piccadilly and District Line) & a short walk to South Acton Station (Overground).

**Key points:**

- 1 Bedroom
- 487 sqft (Including eaves)
- 4 Minute walk to Acton Town tube station
- Modern apartment
- Built in wardrobes in bedroom
- Walking distance to Gunnersbury Park
- No onward chain
- Mill Hill Conservation area
- Solid wood shutters throughout

# Do Better:

**Acton**

sales@astonrowe.co.uk

57-59 Churchfield Road, Acton, London, W3 6AY

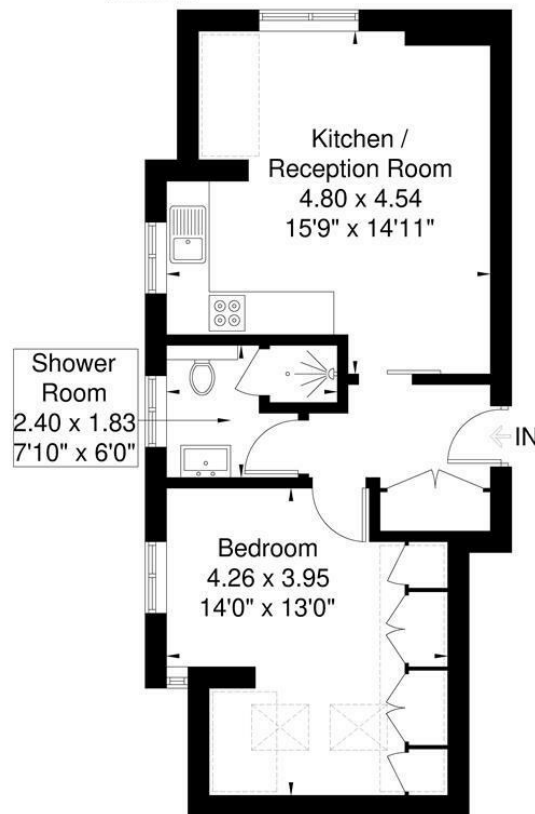
020 8992 3600



**Heathfield Road**  
 Approximate Gross Internal Area = 39.5 sq m / 425 sq ft  
 Reduced Headroom = 5.8 sq m / 62 sq ft  
 Total = 45.3 sq m / 487 sq ft



□ = Reduced headroom below 1.5m / 5'0"



**Second Floor**

Although every attempt has been made to ensure accuracy, all measurements are approximate. The floorplan is for illustrative purposes only and not to scale. © www.perspective.co.uk

## Asking Price £375,000

## Heathfield Road, Acton W3 8EL

Energy Efficiency Rating		Current	Potential
Very energy efficient - lower running costs			
(92 plus) A			
(81-91) B			
(69-80) C			
(55-68) D			
(39-54) E			
(21-38) F			
(1-20) G			
Not energy efficient - higher running costs			
England & Wales		75	75

Environmental Impact (CO <sub>2</sub> ) Rating		Current	Potential
Very environmentally friendly - lower CO <sub>2</sub> emissions			
(92 plus) A			
(81-91) B			
(69-80) C			
(55-68) D			
(39-54) E			
(21-38) F			
(1-20) G			
Not environmentally friendly - higher CO <sub>2</sub> emissions			
England & Wales			

- 1 Reception Rooms
- 1 Bedrooms
- 1 Bathrooms

**The current owner says:**

**The property is set within the popular Mill Hill Conservation area and benefits from a long lease and is within walking distance to Gunnersbury Park and Acton Town Tube station.**

An exceptional one-bedroom top floor apartment, set within the highly regarded Mill Hill Conservation Area, spanning approximately 487 sq ft of beautifully presented internal space. Located on a peaceful, tree-lined road in Acton, the property is just a four-minute walk from Acton Town Tube Station. Situated on the second floor of this luxury development in an imposing, detached building. The apartment benefits from a modern open plan kitchen/diner with integrated appliances. The bedroom area comes with bespoke fitted wardrobes, and the bathroom is fitted with designer sanitary ware.

Heathfield Road is in a peaceful pocket of Acton within a short walk from Gunnersbury Park, Acton Town (District and Piccadilly Line) and South Acton Overground stations. The property also provides easy access to Acton Main Line (Elizabeth Line) station, the A4, M4 and Heathrow airport. Also you are within a short walk to the vibrant café culture of Churchfield Road which offers a good selection of shops, bars and eateries with a more comprehensive variety of shops and local amenities available nearby.

**Parking:** Please note that residents are unable to apply for a parking permit through Ealing Council. But there is free on-street parking available on the street, with some time restrictions during the week, while parking is generally unrestricted at weekends but please note these can be subject to change.

**What's better:**

**A wonderful one bedroom apartment in Mill Hill Conservation area.**

