

Manbre Road, W6

£800,000

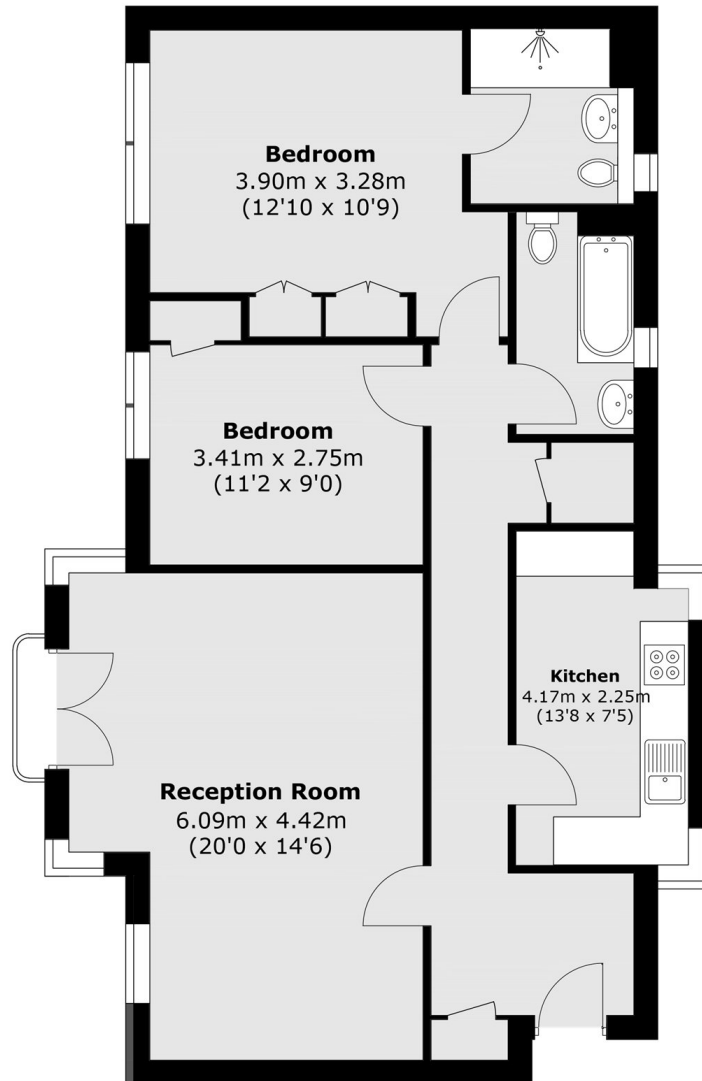
This spacious two bedroom, two bathroom apartment is located on the banks of the river Thames. The development offers an on-site concierge along with allocated gated parking, providing safe and secure living in the heart of Hammersmith.

King Henrys Reach is an ideal location on the river front, close to the famous River Cafe, as well as a variety of other historic, social and commercial aspects of West London. It is moments away from a multitude of transport links including Hammersmith Underground Station as well as being comfortably within reach of Heathrow Airport.

Features

- Riverside Development
- Two Bedrooms
- Two Bathrooms
- Allocated Parking
- Good Condition
- Chain Free

Manbre Road, London, W6



Total area (approx.): 83.0 sq. m (893.4 sq. ft)