

LEXINGTONS



FOR SALE



Malden Road, London, NW5
£50,000 Per Annum





120 Malden Road London, NW5 4QA

- Double shop unit in densely populated area
- Arranged on lower ground, ground and first floors
- Located near Queens Crescent market
- 3983 Sq ft
- Offered on a new lease
- With good transport links
- No Premium

Prime Investment Opportunity – Ideal for Pilates Studio, Gym or Wellness Use

Lexingtons are pleased to offer this substantial double-fronted commercial property on busy Malden Road, NW5, perfectly positioned between Chalk Farm, Belsize Park, and Kentish Town West stations, with Gospel Oak and Kentish Town also nearby. The area benefits from excellent transport links, high footfall, and close proximity to Queens Crescent Market. Offered in shell condition, the property provides a blank canvas for complete modernisation and bespoke fit-out—perfect for creating a Pilates studio, gym, or wellness centre.

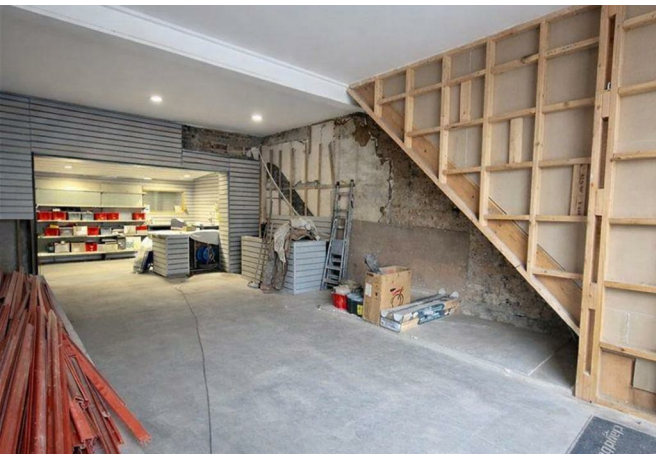
Accommodation includes:

- * Ground Floor: 1,991 sq ft – ideal for studio or reception space
- * First Floor: 495 sq ft - potential for treatment rooms or offices
- * Lower Ground Floor: 1,496 sq ft – excellent storage or changing areas
- * Outside Roof Terrace – ideal for outdoor classes or events

Totalling approx. 3,982 sq ft, this freehold property offers outstanding scope to establish a large, modern wellness destination in a thriving North West London location.

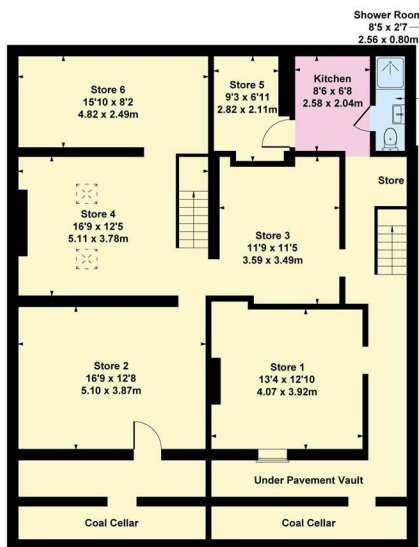
Please note: Photographs have been digitally enhanced to illustrate potential development. Furnishings and gym equipment shown are not included.

£50,000 Per Annum

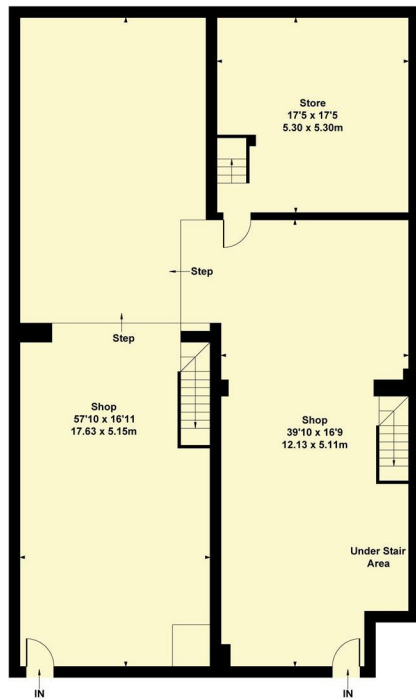


Malden Rd, London, NW5

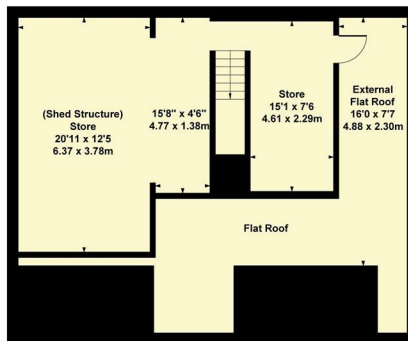
Approximate Gross Internal Area
3983 sq ft - 370 sq m
Approximate Gross External Area
Area Does Not Add Up = 301 sq ft - 28 sq m



LOWER GROUND FLOOR
139 sq-m -1496 sq-ft



GROUND FLOOR
185 sq-m -1991 sq-ft



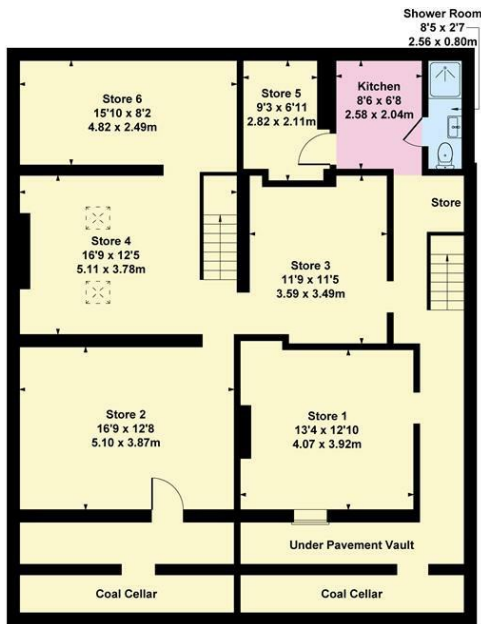
FIRST FLOOR
46 sq-m - 495 sq-ft
FLAT ROOF AREA
28 sq-m - 301 sq-ft

Not to Scale. Produced by The Plan Portal 2025
For Illustrative Purposes Only.

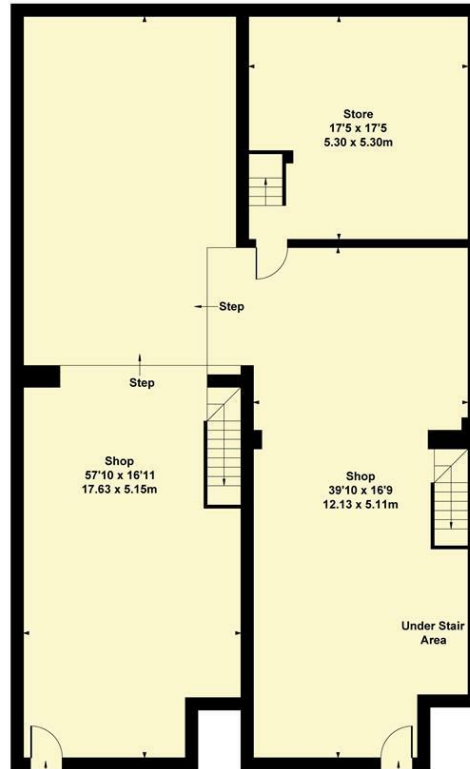
Directions

Malden Rd, London, NW5

Approximate Gross Internal Area
3983 sq ft - 370 sq m
Approximate Gross External Area
Area Does Not Add Up = 301 sq ft - 28 sq m

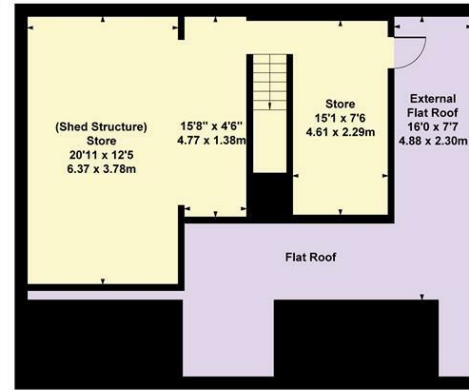


LOWER GROUND FLOOR
139 sq-m -1496 sq-ft

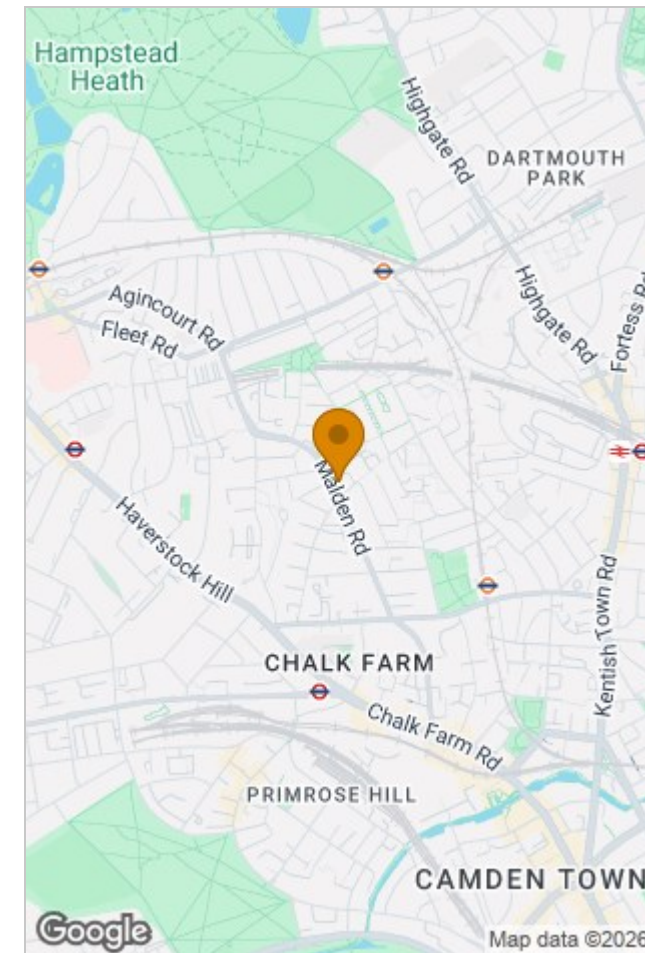


GROUND FLOOR
185 sq-m -1991 sq-ft

Not to Scale. Produced by The Plan Portal 2025
For Illustrative Purposes Only.



FIRST FLOOR
46 sq-m - 495 sq-ft
FLAT ROOF AREA
28 sq-m - 301 sq-ft



Energy Efficiency Rating		Current	Potential
Very energy efficient - lower running costs			
(92 plus) A			
(81-91) B			
(69-80) C			
(55-68) D			
(39-54) E			
(21-38) F			
(1-20) G			
Not energy efficient - higher running costs			
England & Wales		EU Directive 2002/91/EC	

Environmental Impact (CO ₂) Rating		Current	Potential
Very environmentally friendly - lower CO ₂ emissions			
(92 plus) A			
(81-91) B			
(69-80) C			
(55-68) D			
(39-54) E			
(21-38) F			
(1-20) G			
Not environmentally friendly - higher CO ₂ emissions			
England & Wales		EU Directive 2002/91/EC	

Viewing

Please contact our Lexingtons Sales and Lettings Office on 0207 435 7775 if you wish to arrange a viewing appointment for this property or require further information.

The particulars are set out as a general outline only for the guidance of intended purchasers or lessees, and do not constitute, any part of a contract. Nothing in these particulars shall be deemed to be a statement that the property is in good structural condition or otherwise nor that any of the services, appliances, equipment or facilities are in good working order. Purchasers should satisfy themselves of this prior to purchasing.