



JOHN ROBERTS & Co
estate agents



2 Hillview Cottages, Chorleywood, WD3 5JF

£1,950 Per Month



2



1



1



D



£1,950 Per Month

2 Hillview Cottages

Chorleywood, WD3 5JF

- Picturesque Property
- Large Garden
- Log Burner Effect Gas Fire
- Walking Distance to Station
- Loft Room
- Two Double Bedrooms
- Decking Area with Rattan Furniture
- Walking Distance to Village Shops
- Freshly Decorated
- One Off-Street Parking Space

We are delighted to offer this desirable character cottage on Chorleywood Common, set in a sought after position with one parking space.

At ground floor level the living room offers ample space with a log effect gas fire, this leads into the kitchen with ample wall and base units and door leading to a pretty garden with decking area furnished with a Rattan garden furniture set and use of the shed.

Stairs to first floor with two double bedrooms; one with wardrobe, together with a generous sized bathroom with shower over bath. There is the added bonus of a loft room with fitted carpet and power points which would make an excellent office.

This property enjoys access to Chorleywood village centre, with its varied shopping facilities and railway station which provides a Chiltern Line/Met Line service into London. For those who drive, there is access to the M25 at junctions 17 and 18.

Unfurnished

Council Tax Band: E

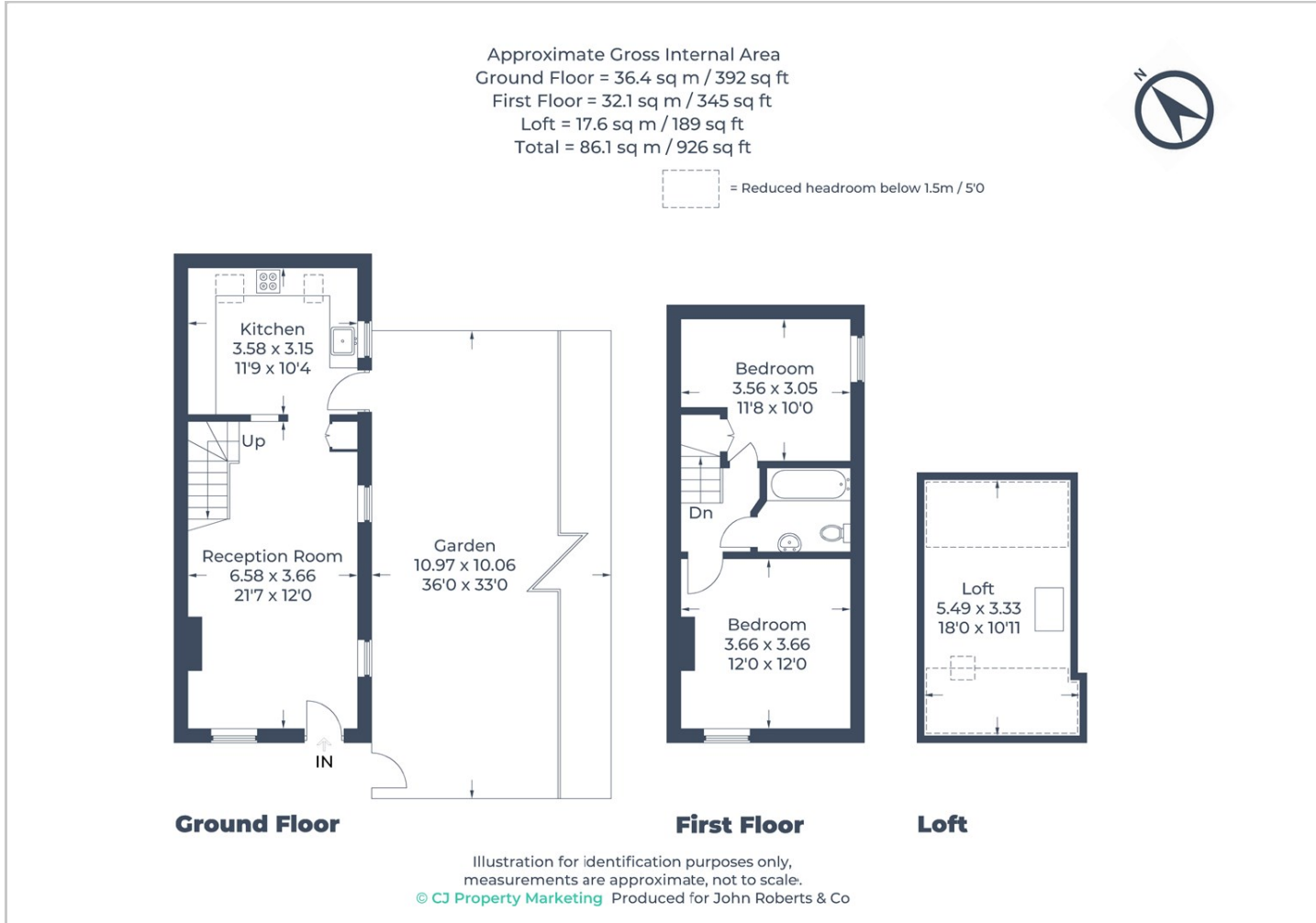
EPC Rating: D



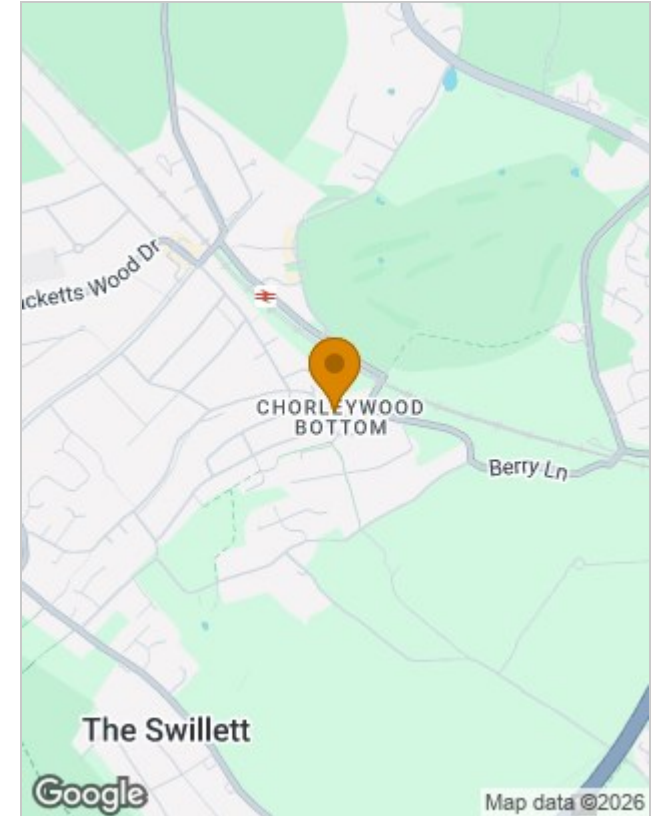




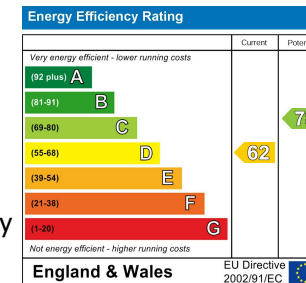
Floor Plans



Location Map



Energy Performance Graph



Viewings

Please contact our Chorleywood Lettings Office on 01923 777747 if you wish to arrange a viewing appointment for this property or require further information.

The particulars are set out as a general outline only for the guidance of intended purchasers or lessees, and do not constitute, any part of a contract. Nothing in these particulars shall be deemed to be a statement that the property is in good structural condition or otherwise nor that any of the services, appliances, equipment or facilities are in good working order. Purchasers should satisfy themselves of this prior to purchasing.