



Idling Milton Place, Fairford - GL7 4HS
Fairford

Guide Price **£375,000**
mcfarlane
property.com

Idling Milton Place

Fairford

- FOUR Bedroom End Terrace Home
- Sought After Cul-De-Sac Position
- Beautifully Presented Home
- Altered Improved and Well Presented
- Accommodation of Three Floors
- Signature Master Bedroom (Top Floor)
- Ground Floor WC
- Enclosed Rear Gardens
- Conservatory Overlooking Gardens
- Allocated Parking

This beautifully presented four bedroom end of terrace house is situated in a highly sought after cul-de-sac, offering both privacy and convenience for families and professionals alike.

The property has been thoughtfully altered and improved, providing spacious and flexible accommodation arranged over three floors.



Idling Milton Place

Fairford

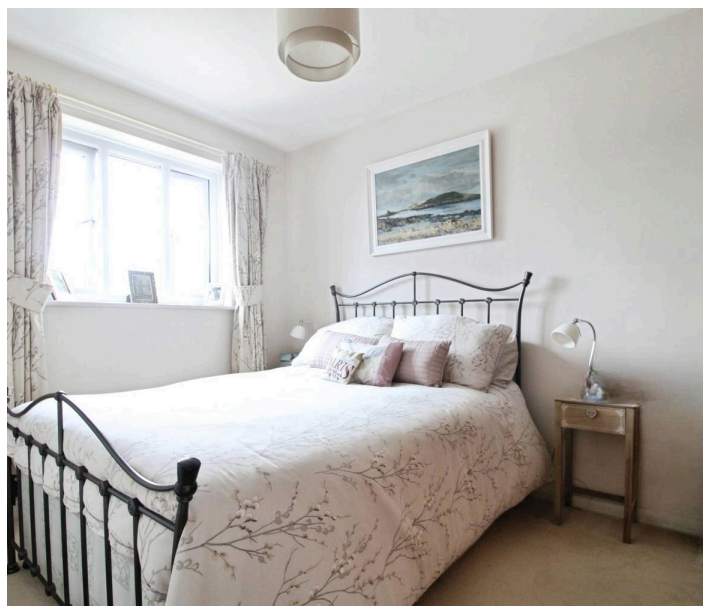
Fairford is a well received market town in the sought after Cotswolds in Gloucestershire. There is a bustling community with thriving High Street and plethora of amenities and Shops. Placed within the Cotswold Water Parks Fairford offers the stunning and picturesque Mill with the River Coln meandering through the this delightful Town. Cirencester (the Capital of the Cotswolds) is located approximately 8.5 miles away.

Council Tax band: D

Tenure: Freehold

EPC Energy Efficiency Rating:

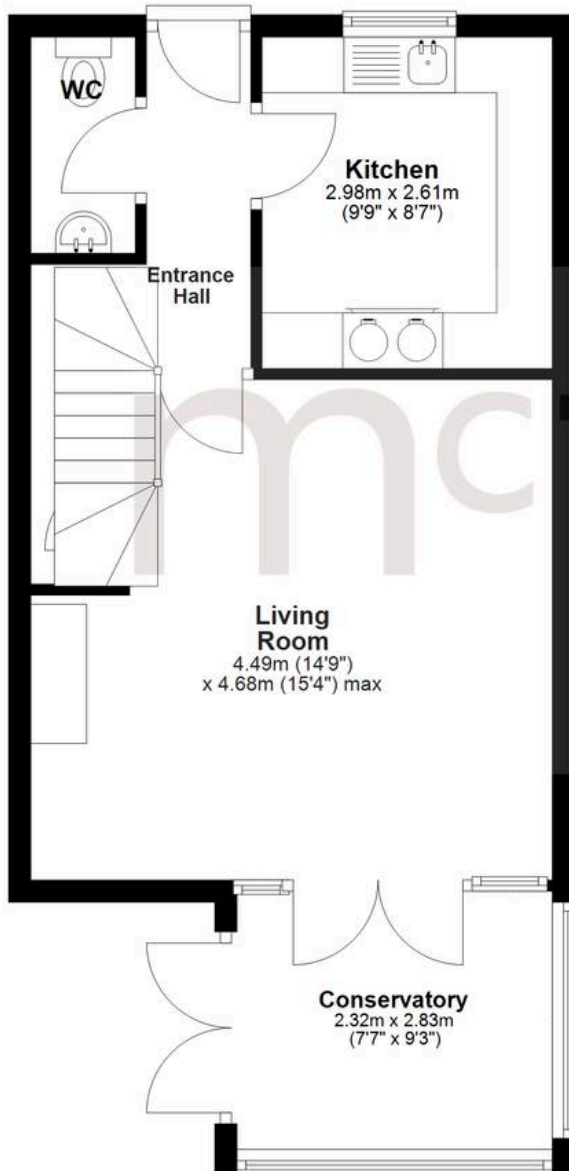
EPC Environmental Impact Rating:



mcfarlane
property.com

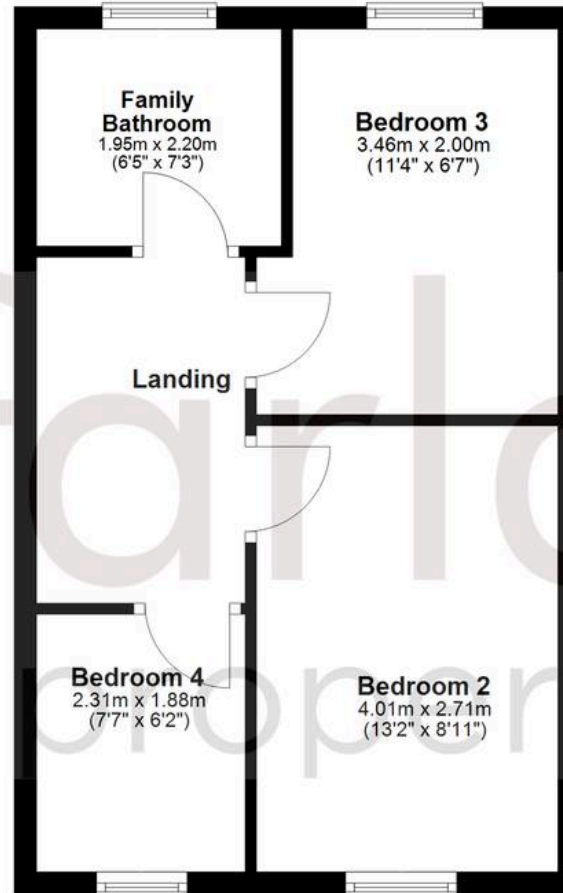
Ground Floor

Approx. 42.3 sq. metres (455.8 sq. feet)



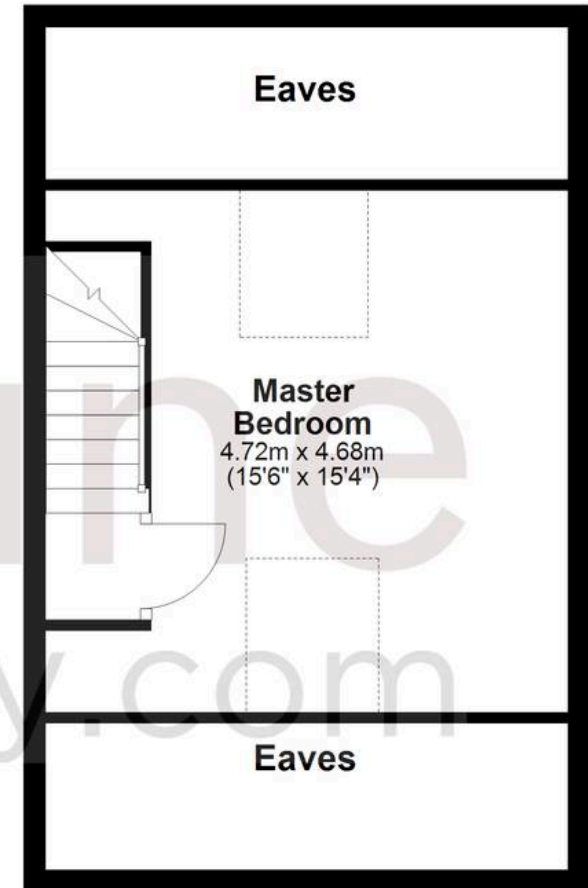
First Floor

Approx. 35.5 sq. metres (381.6 sq. feet)



Second Floor

Approx. 36.8 sq. metres (395.7 sq. feet)



Total area: approx. 114.6 sq. metres (1233.1 sq. feet)

Agents Note: Whilst every care has been taken to prepare these sales particulars, they are for guidance purposes only. All measurements are approximate and for general guidance purposes only and whilst every care has been taken to ensure their accuracy, they should not be relied upon and potential buyers are advised to recheck the measurements.