



Carlisle Place, SW1P

£853 Per week

Dexters



Carlisle Place, SW1P

An outstanding and extremely spacious two bedroom apartment situated in a prestigious mansion building. The property has high ceilings and period features and is ideal for entertaining.

The accommodation is greeted by a large hallway with the original tiled flooring which leads to the kitchen, living room and both double bedrooms. The kitchen is separate, finished to a good standard with a Smeg fridge freezer.

The living room is the most impressive room, with wooden floors, high ceilings and original features including the fireplace. One of the bedrooms has an en suite with double basin and marble floors. There is a further bathroom adjacent to the second bedroom.

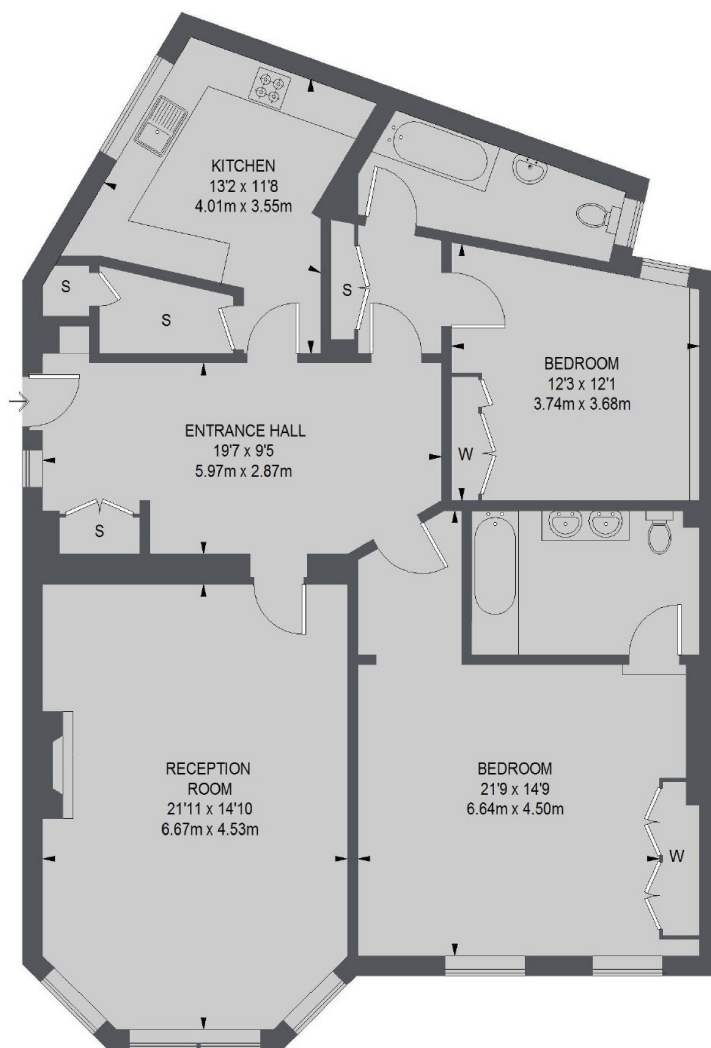
Evelyn Mansions is one of Westminster's popular apartment buildings located just off Victoria Street with its many shops, restaurants, Curzon cinema and theatres.

Features

- Two Bedrooms
- Separate Kitchen
- Mansion Building
- Wooden Floors
- Dining Area
- Two Bathrooms



Carlisle Place, London, SW1P



TOTAL APPROX. FLOOR AREA
1319 SQ. FT. (122.54 SQ. M.)

Dexters

Pimlico
42 Denbigh Street
London
SW1V 2ER
Lettings
020 7976 5200

Energy Rating: C. We aim to make our particulars both accurate and reliable. However they are not guaranteed; nor do they form part of an offer or contract. If you require clarification on any points then please contact us, especially if you're traveling some distance to view. Please note that appliances and heating systems have not been tested and therefore no warranties can be given as to their good working order.

 **RICS** | Regulated
Estate Agent
and Letting Agent

[dexters.co.uk](https://www.dexters.co.uk)