

**Bishop Burton Road, Cherry Burton, Beverley, HU17 7RW**

£555,000

4 2 2



REFERENCE BA0665 Ben Appella. This is a fabulous family home set on a large West facing plot in a non estate location within the village. Maintained to a very high standard by my client the property presents very well indeed and offers well proportioned living accommodation throughout with four double bedrooms and two bathrooms to the first floor as well as a very good sized lounge and separate kitchen/dining room and very useable conservatory.

- Beautifully Presented
- Well Proportioned Lounge
- Conservatory
- En Suite and Family Bathroom
- Double Garage/Driveway Parking
- Cloakroom
- Sizeable Kitchen/Dining Room
- Four Generous Double Bedrooms
- 1/5th Acre West Facing Plot
- Gas Fired CH/Double Glazing

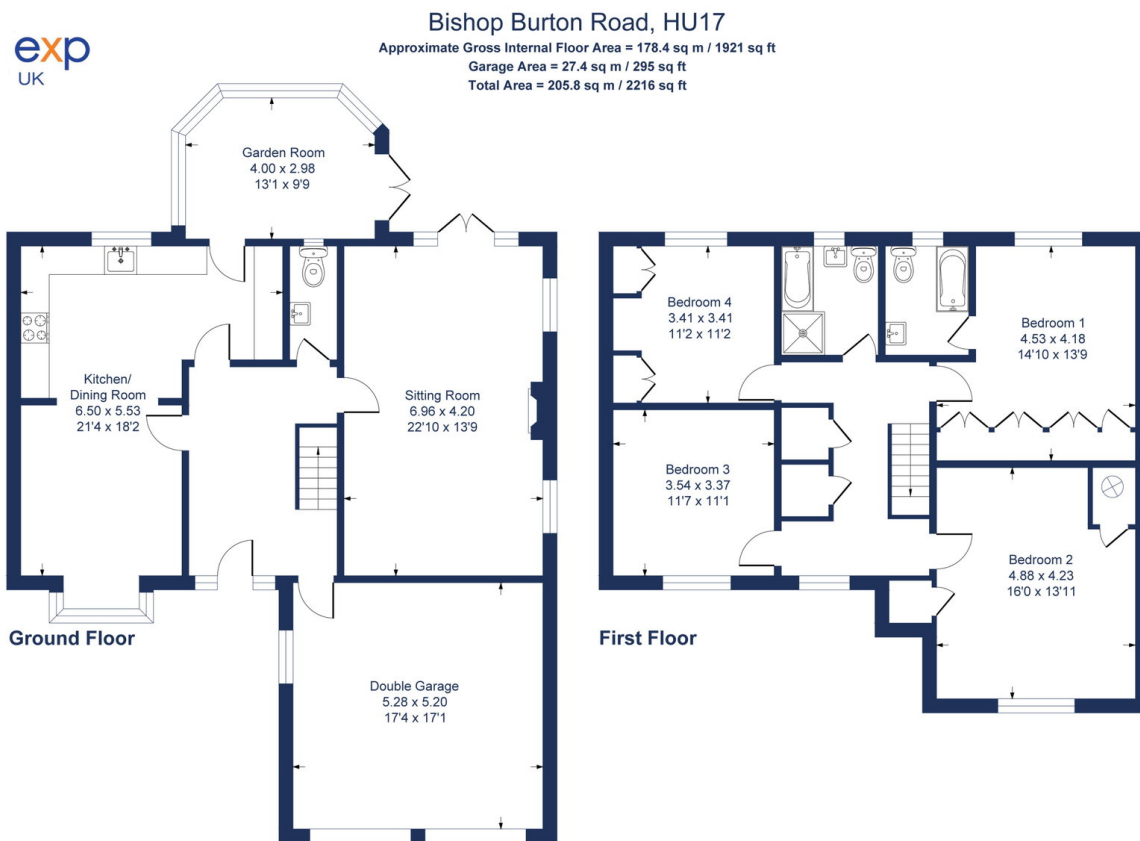


Illustration for identification purposes only, measurements are approximate, not to scale.