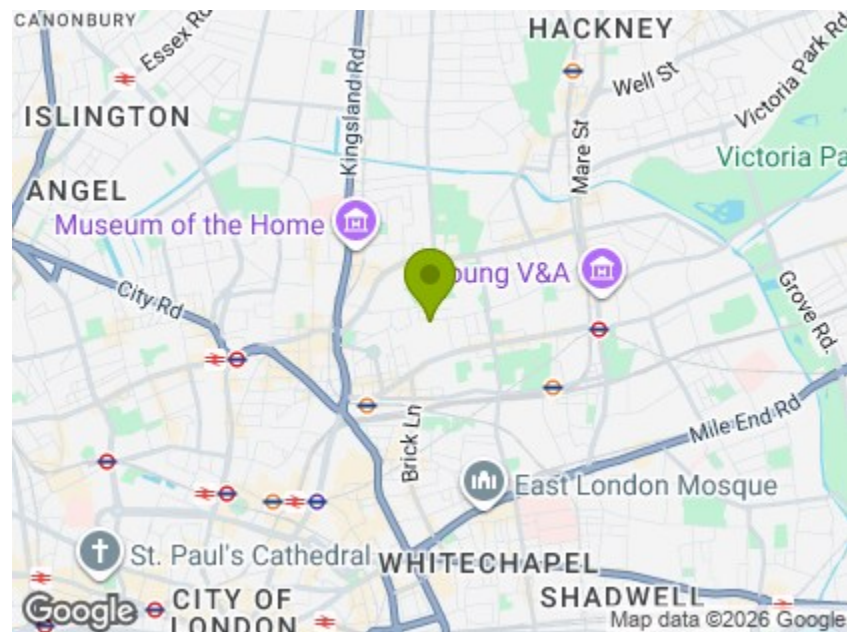


Ground Floor

Lower Ground Floor

Total Area: 55.9 m<sup>2</sup> ... 602 ft<sup>2</sup>  
 All measurements are approximate and for display purposes only.



Energy Efficiency Rating	
Very energy efficient - lower running costs	Current Potential
(92 plus) A	76
(81-91) B	
(69-80) C	
(55-68) D	
(39-54) E	
(21-38) F	
(1-20) G	
Not energy efficient - higher running costs	
England & Wales EU Directive 2002/91/EC	



## GOSSET STREET, HACKNEY

£3,750 Per Calendar Month  
 2 Bed Flat



### Features:

- Short Let
- All Bills Included
- Pub Conversion
- Walking Distance To Bethnal Green Tube Station
- Green Open Spaces Nearby
- Moments From Columbia Road

A gorgeously realised two bedroom pub conversion, laid out over two floors and within easy walking distance of the City. Ingeniously arranged with high ceilings and plenty of natural light, you have plenty of original architectural details throughout.

You're just five minutes from Bethnal Green Road and its timeless range of pubs and restaurants, plus the famous Working Men's Club, a great venue with a diverse range of events.

REQUEST A VIEWING  
 0208 520 3077

**E11, E7, E12 & E15**  
 hello11@stowbrothers.com  
 0203 397 2222

**E4 & N17**  
 hello4@stowbrothers.com  
 0203 369 6444

**E17 & E10**  
 hello17@stowbrothers.com  
 0203 397 9797

**E18 & IG8**  
 hello18@stowbrothers.com  
 0203 369 1818

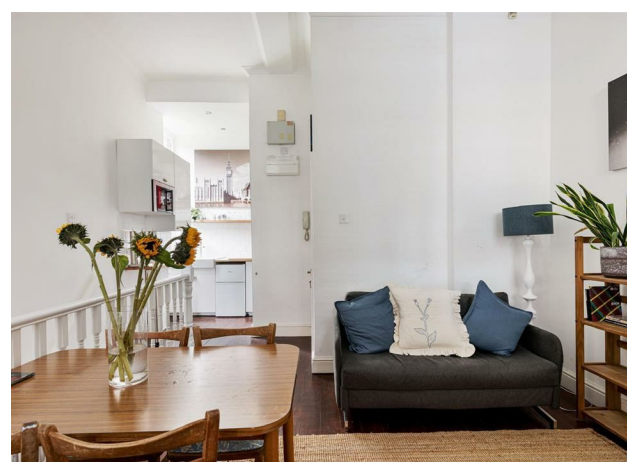
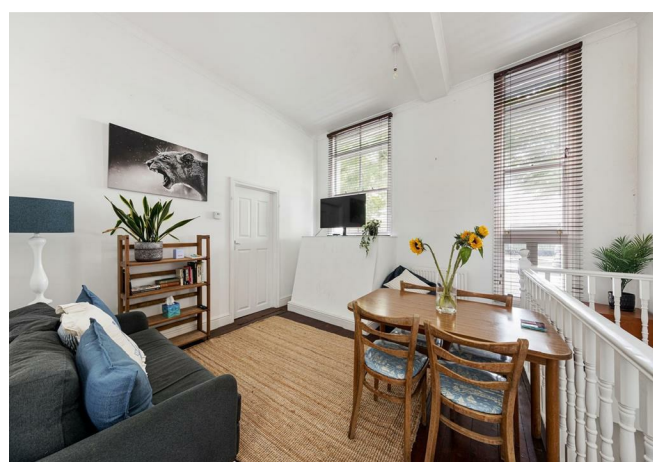
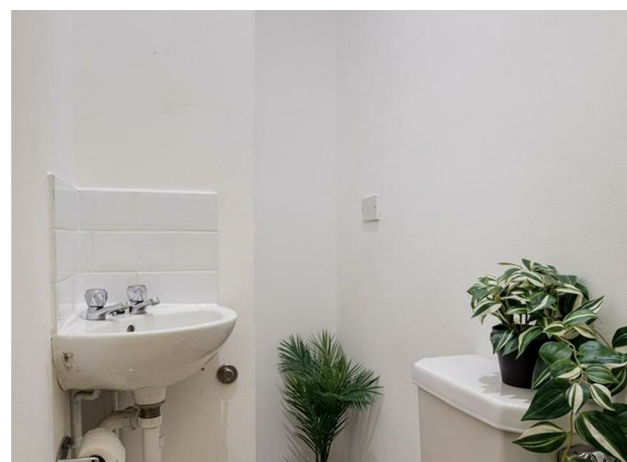
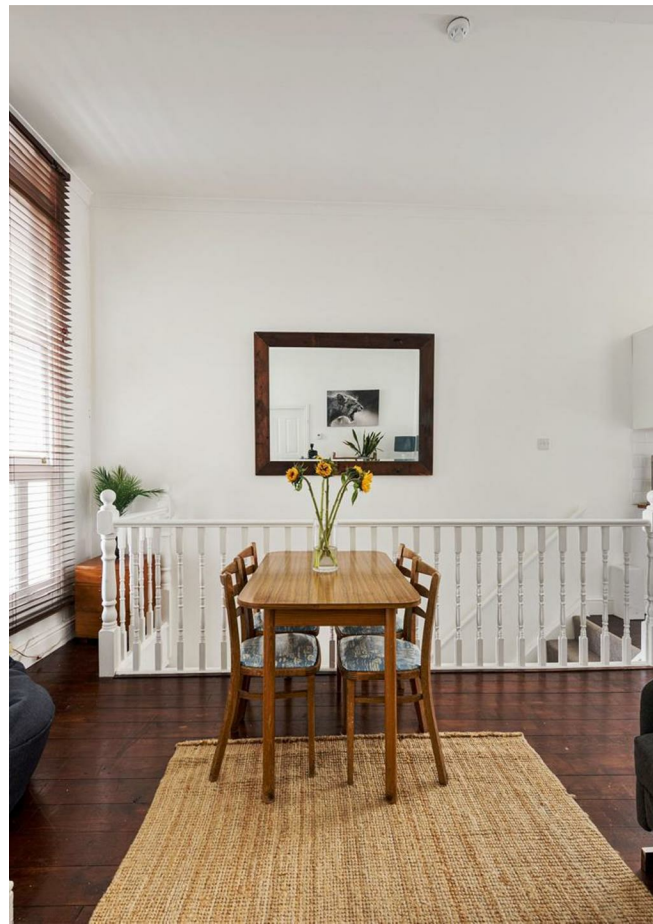
**E8, E9, E5, N16, E3 & E2**  
 hellohackney@stowbrothers.com  
 0208 520 3077

**New Homes**  
 newhomes@stowbrothers.com  
 0203 325 7227

**Investment & Development**  
 id@stowbrothers.com  
 0208 520 6220

**Property Maintenance**  
 propertymanagement@stowbrothers.com  
 0203 325 7228

STOWBROTHERS.COM  
 @STOWBROTHERS



## IF YOU LIVED HERE...

Step inside and you have a handy guest WC on the right, always a welcome bonus. Step on into your 200 square foot reception room, complete with twin windows, dark hardwood floors and high ceilings. It's laid open to your kitchen, featuring white metro tiled splashbacks, timber worktops and a twin butler sink.

Your first bedroom completes the storey, a solid double positioned just off the lounge. Downstairs, your bathroom is similarly stylish, with pristine white

metro tilework from floor to ceiling, a tall chrome heated towel rail and a shower over the tub. Your principal bedroom comes in at a substantial 140 square feet with twin skylights and a mezzanine bed.

Outside, and you can easily complete your City commute on foot. It's just a twenty five minute walk to Liverpool Street station and the heart of the City. Shoreditch High Street is closer still, just fifteen minutes for the famous Shoreditch nightlife. And of course you have Bethnal Green Road right on your doorstep.



## WHAT ELSE?

- Bethnal Green tube is around a half mile away on foot for the Central line.
- You're well served for open green space with Weavers Fields, Ion Square Gardens and Haggerston Park all within easy reach. All great for joggers and strollers alike.
- You have a staggering range of nightlife at your fingertips, but for your new local, be sure to check out the Kings Arms just the other side of Bethnal Green Road, a charming community pub.
- Columbia Road Flower Market is a must visit running on Sundays.

REQUEST A VIEWING  
0208 520 3077

FOLLOW US → @STOWBROTHERS  
STOWBROTHERS.COM



REQUEST A VIEWING  
0208 520 3077

FOLLOW US → @STOWBROTHERS  
STOWBROTHERS.COM



REQUEST A VIEWING  
0208 520 3077

FOLLOW US → @STOWBROTHERS  
STOWBROTHERS.COM