



Plot 73, Carlton Edgelaw View
GILMERTON | EH17 8SD


warners
solicitors & estate agents

Plot 73, Calrton Edgelaw View

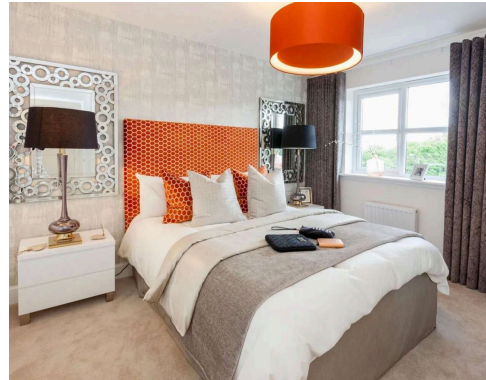
GILMERTON | EH17 8SD

The impact of natural, welcoming light created by the triple-windowed, dual aspect lounge is further enhanced by the dual aspect kitchen with its french doors, adding a focal point to the dining area. The principal bedroom, incorporating en-suite facilities presents a private retreat with a dash of luxury.

The popular Gilmerton area of Edinburgh lies to the south of the city centre. There is a good range of shopping outlets in the vicinity, mainly small specialist shops serving the local community. Further shops and amenities can be found at the Cameron Toll Centre and Straiton Retail Park, which are both within easy reach. Schooling is well represented from nursery to senior level. Regular public transport services operate into Edinburgh and the main commuting routes, including the Bypass, M8 and M9, are also easily accessible. The property is also ideally positioned for those connected to the Royal Infirmary.

PRICE & VIEWING:

Please refer to our website, www.warnersllp.com or call us on 0131 667 0232.



22 St. Patrick Square, Edinburgh, EH8 9EY | 176 Portobello High Street, Edinburgh, EH15 1EX | 247B St John's Road, Edinburgh, EH12 7XD

0131 667 0232

property@warnersllp.com

warnersllp.com