



5 ANN STRUTT CLOSE

Hadleigh | Suffolk



Chapman Sticks

5 ANN STRUTT CLOSE, HADLEIGH, SUFFOLK, IP7 6FG

Manningtree – 9 miles
Ipswich – 10 miles
Colchester – 13 miles

- Reception hall • Sitting room • Dining room •
- Kitchen / breakfast room • Cloakroom • 4 bedrooms •
- 2 bathrooms (1 ensuite) • Garage with further parking •
- Landscaped gardens •

The Property

NO ONWARD CHAIN - Built about 10 years ago, 5 Ann Strutt Close is a well-presented family house quietly situated at the end of a cul-de-sac.

The accommodation is attractively laid out – the ground floor comprises a sitting room with casement door to the rear garden, a dining room, a comprehensively fitted kitchen / breakfast room with extensive cupboards, drawers and work surfaces, built in fridge / freezer, oven, and 4 ring hob.

On the first floor there are three double bedrooms, one with an ensuite shower room, a single bedroom, and family bathroom.

Outside

The property lies behind a wrought iron fence and hedge, the front garden is mainly laid to lawn with a number of specimen shrubs.

The rear garden is enclosed by a brick wall and close boarded fence, there are two terraces, an area of lawn, and numerous mature shrubs and maturing trees.

There is also a single garage and off-road parking for several cars.

Location

The popular historic market town of Hadleigh is situated about 10 miles from Ipswich, 9 miles from Manningtree and about 13 miles from Colchester – all having main line services for London's Liverpool Street station. The bustling town centre offers a wide range of local amenities including restaurants, pubs, sports facilities and a wide selection of shops.

Services

Mains electricity, gas, water, and drainage.

EPC Rating

Current B(82). Potential B(90).

Local Authority and Council Tax Band

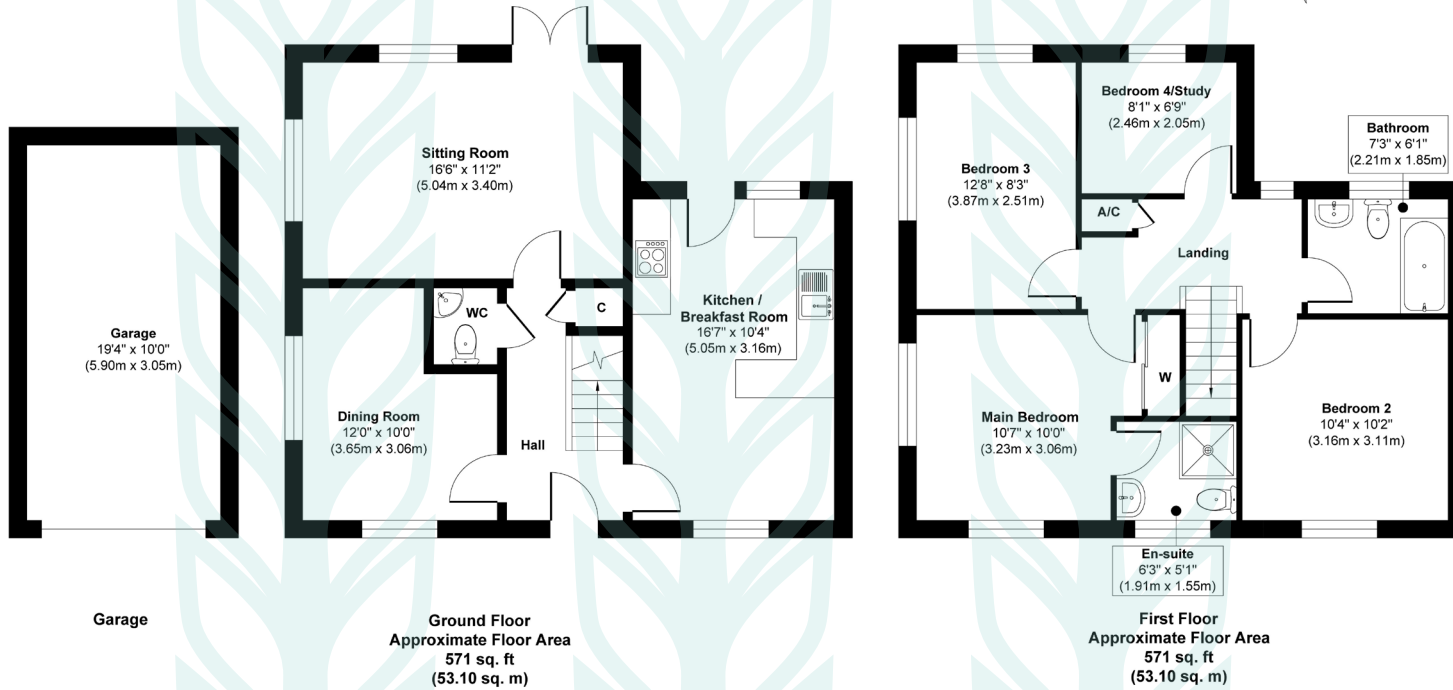
Babergh with Mid Suffolk District Council
Band D (2026)

A VERY WELL-PRESENTED MODERN DETACHED FAMILY HOUSE AT THE END OF A QUIET CUL-DE-SAC





5 Ann Strutt Close, Hadleigh, IP7 6FG



Approx. Gross Internal Floor Area 1142 sq. ft / 106.20 sq. m
Illustration for identification purposes only, measurements are approximate, not to scale.



Chapman Stickels

The Corn Exchange,
Market Place,
Hadleigh,
Suffolk,
IP7 5DN

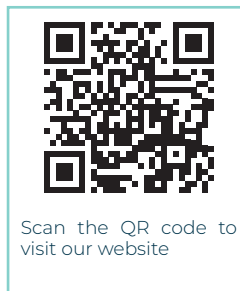
info@chapmanstickels.co.uk
www.chapmanstickels.co.uk

01473 372 372

All enquiries:

Benedict Stickels
ben@chapmanstickels.co.uk

Cleo Shiel
cleo@chapmanstickels.co.uk



Scan the QR code to
visit our website

rightmove

OnTheMarket.com

Zoopla

PrimeLocation.com

IMPORTANT NOTICE
Chapman Stickels states these particulars are for general information only and do not constitute an offer or contract or part thereof. All descriptions, photographs and plans are for guidance only and should not be relied upon as statements or representations of fact. All measurements are approximate where stated. Any prospective purchaser must satisfy themselves of the accuracy of the information within these particulars by inspection or otherwise. Chapman Stickels does not have any authority to give any representations or warranties whatsoever in relation to this property (including but not limited to planning/building restrictions), nor can it enter into any contract on behalf of the client. We do not accept responsibility for any expenses incurred by prospective purchasers in inspecting properties which have been sold, let or withdrawn. If there is anything of particular importance to you, please contact us where we will endeavour to have any information or queries checked.