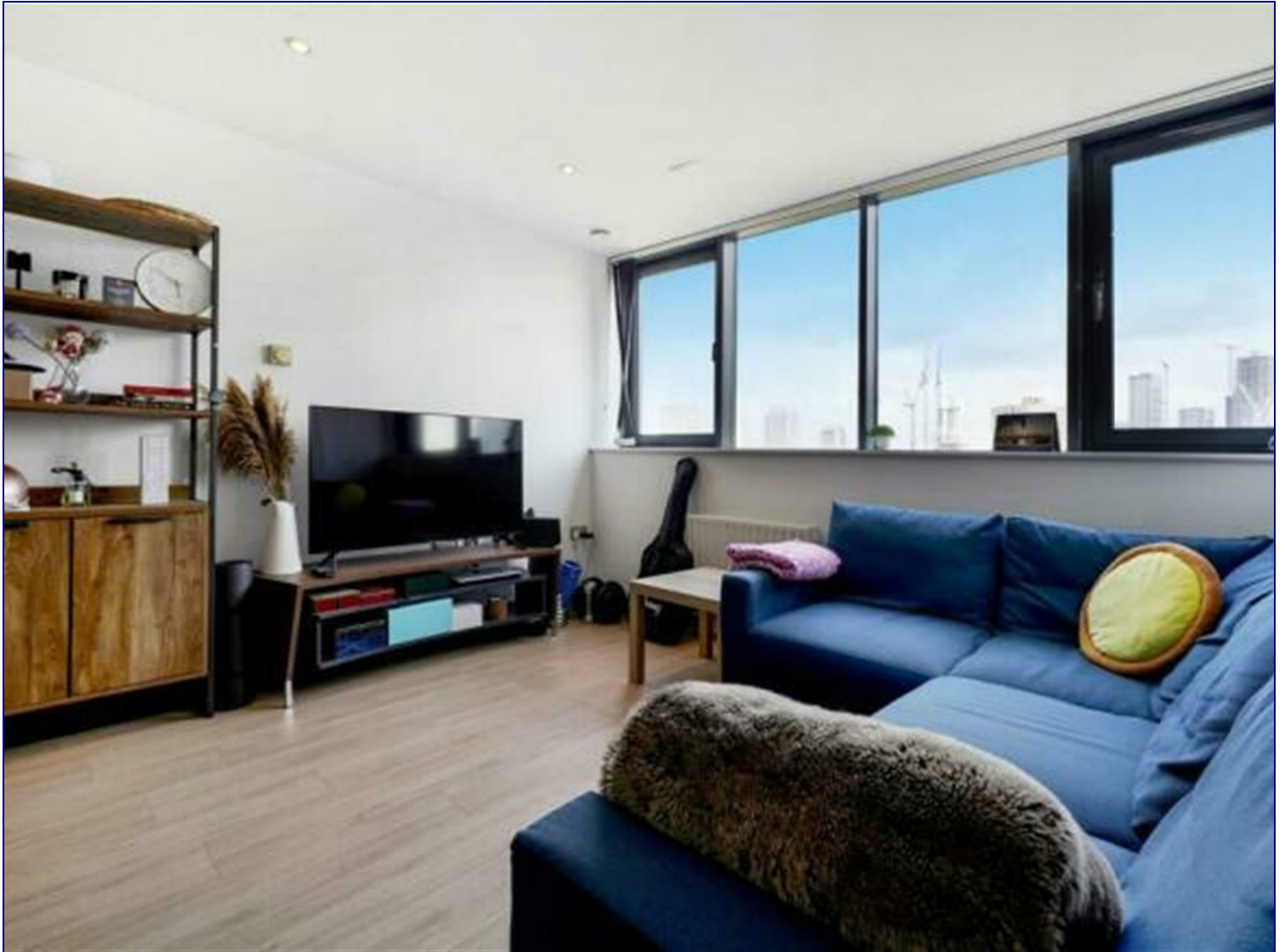


187 East India Dock Road, London, E14 0EF

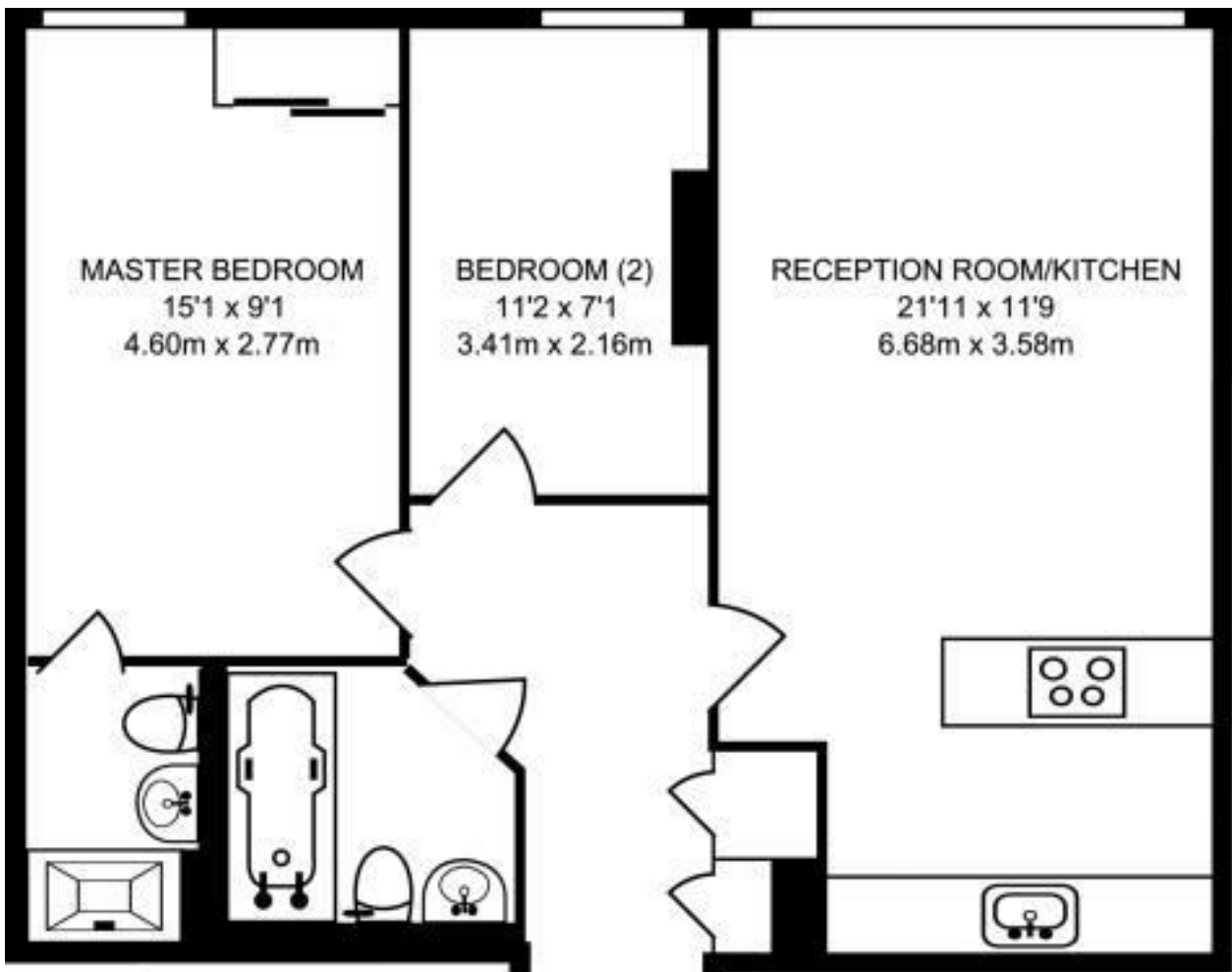


£2,000 Per Month

Affording views of Canary Wharf from the reception room, this modern two bedroom flat is set in a portered development in a central location.

The Fusion Building boasts many nearby amenities, including the Crisp Street market, as well as benefiting from easy access into Canary Wharf, where a more extensive selection of attractions can be found.





ELEVENTH FLOOR
648 SQ FT/60.19 SQ M

Energy Efficiency Rating

	Current	Potential
Very energy efficient - lower running costs		
(92 plus) A		
(81-91) B		
(69-80) C		
(55-68) D		
(39-54) E		
(21-38) F		
(1-20) G		
Not energy efficient - higher running costs		
England & Wales	EU Directive 2002/91/EC	

Environmental Impact (CO₂) Rating

	Current	Potential
Very environmentally friendly - lower CO ₂ emissions		
(92 plus) A		
(81-91) B		
(69-80) C		
(55-68) D		
(39-54) E		
(21-38) F		
(1-20) G		
Not environmentally friendly - higher CO ₂ emissions		
England & Wales	EU Directive 2002/91/EC	



Associated Offices in London, Essex and Hertfordshire

Kings Head Office Tudor Lodge, Burton Lane, Goffs Oak, Hertfordshire EN7 6SY Tel: 01707-872000

