

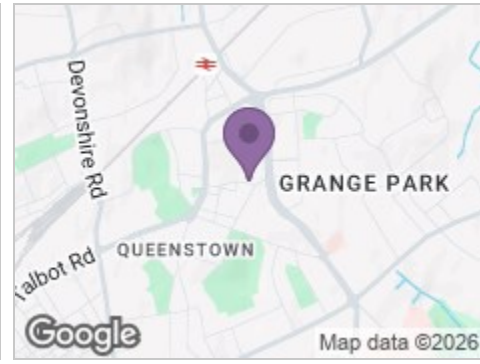
Road Map



Hybrid Map



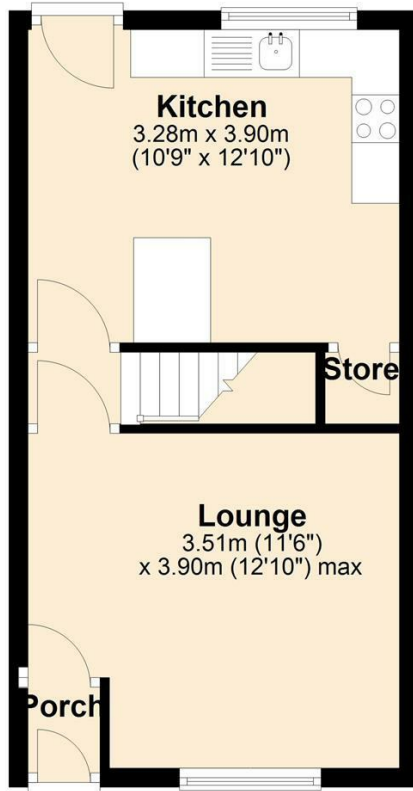
Terrain Map



Floor Plan

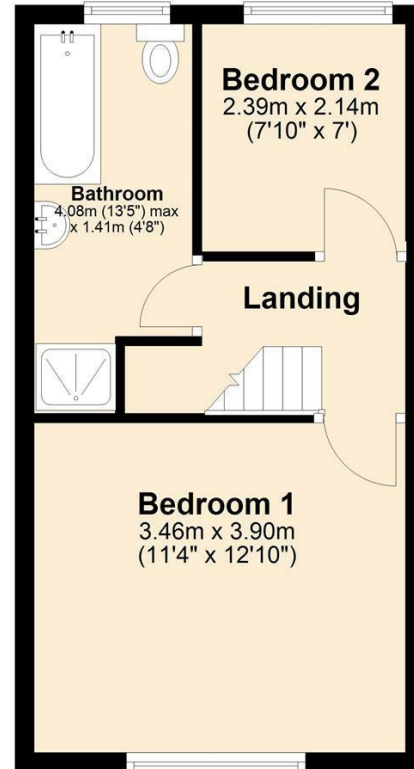
Ground Floor

Approx. 30.2 sq. metres (325.2 sq. feet)



First Floor

Approx. 29.3 sq. metres (315.3 sq. feet)



93 Onslow Road

, Blackpool, FY3 7EP

Offers In The Region Of £88,000

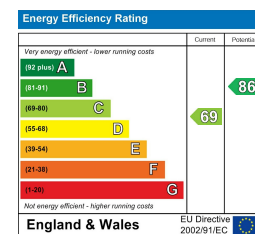


Viewings

Please contact our iMove Sales & Lettings Office on 01253 883311 if you wish to arrange a viewing appointment for this property or require further information.

These particulars, whilst believed to be accurate are set out as a general outline only for guidance and do not constitute any part of an offer or contract. Intending purchasers should not rely on them as statements of representation of fact, but must satisfy themselves by inspection or otherwise as to their accuracy. No person in this firm's employment has the authority to make or give any representation or warranty in respect of the property.

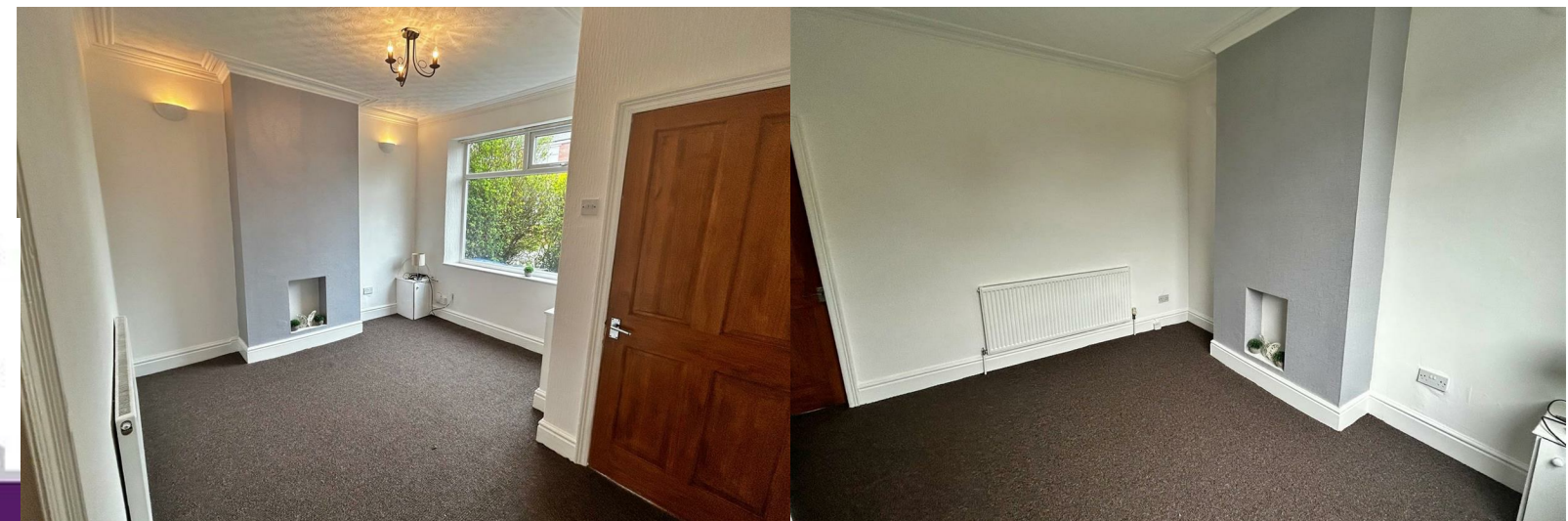
Energy Efficiency Graph



Make your next move with... iMove

Call us now on 01253 883311

hello@imovetoday.co.uk



93 Onslow Road

, Blackpool, FY3 7EP

Offers In The Region Of £88,000



Porch

Entry through UPVC door. Laminate flooring and internal door leading into Lounge

Tenure - Freehold

EPC Rating C

Council Tax Band - A - Blackpool Borough Council

Lounge

12'9" x 11'6"

UPVC window to front elevation, carpet, ceiling light and radiator.

Kitchen

12'9" x 10'9"

UPVC double glazed window to rear and UPVC door to rear leading to garden. Wall and base units with worktop above. Stainless steel sink unit, fitted oven, hob and extractor. Plumbed for washing machine. Under stairs storage cupboard. Vinyl flooring, ceiling light and radiator.

First Floor Landing

Bedroom One

12'9" x 11'4"

UPVC window to front elevation, carpet flooring, wall mounted radiator and ceiling light.

Bedroom Two

7'10" x 7'0"

UPVC window to rear elevation, carpet flooring, wall mounted radiator

Bathroom

13'4" x 4'7"

UPVC double glazed opaque window to rear. Four piece bathroom suite comprising wash hand basin and separate low flush WC, panel bath and shower cubicle. Vinyl flooring, ceiling light and radiator.

Exterior

On street parking, private rear yard.

Further Details

