



28 Whitehouse Gardens

Gorebridge, EH23 4FQ



VMH ESTATE AGENTS



Mid-terraced 2 bed house in the popular commuter town of Gorebridge, ideal for a first time buyer.

- Sitting room
 - Kitchen
 - Downstairs WC
 - 2 double bedrooms
 - Bathroom with 3-piece suite
 - Bright & well proportioned
 - Ideal for a first time buyer
 - Allocated parking space
 - South facing private rear garden
 - Gas central heating & double glazing
- Offers Over:

£175,000



Further information can be found in the home report.

About the Property

Situated in the popular Midlothian village of Gorebridge, this well-presented two bedroom mid-terraced house offers bright and comfortable accommodation ideally suited to first-time buyers, young professionals or downsizers.

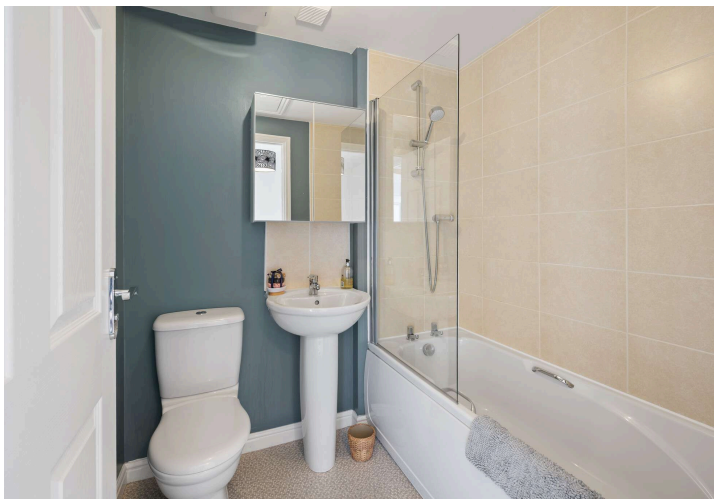
The property features a spacious living area, a well-appointed kitchen, two good-sized bedrooms and a modern bathroom.

Further benefits include gas central heating, double glazing, private rear garden and an allocated parking space. Excellent local amenities, schooling and transport links are all within easy reach, making this an appealing home in a convenient location.

Extras

To include all fitted flooring, carpets, curtains, curtain rails & blinds in addition to the white goods within the kitchen - oven, hob, extractor hood, washing machine and fridge/freezer.





📍 Location

Located around 10 miles south of Edinburgh, Gorebridge combines a peaceful Midlothian countryside setting with excellent connectivity to the capital. The town offers a range of local amenities, including shops, healthcare services, leisure facilities and schools, with additional shopping and secondary education available nearby. Surrounded by scenic countryside, it is ideal for outdoor pursuits, while the Borders Railway provides regular services to Edinburgh Waverley in around 30 minutes. Convenient access to the A7, Edinburgh City Bypass and the M8/M9 motorway network also makes Gorebridge a popular commuter location.

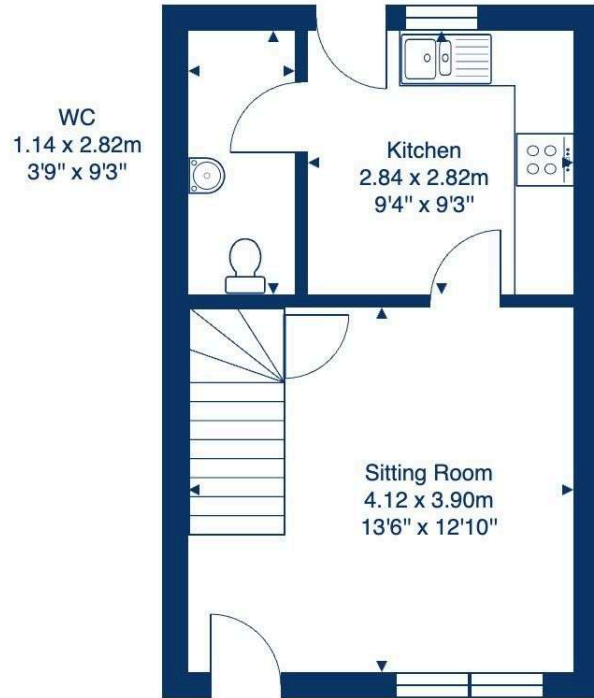
🏠 Management

The development is managed by First Port factors at a current cost of £30 per quarter to include maintenance of common areas, keeping tidy and regular grass cutting

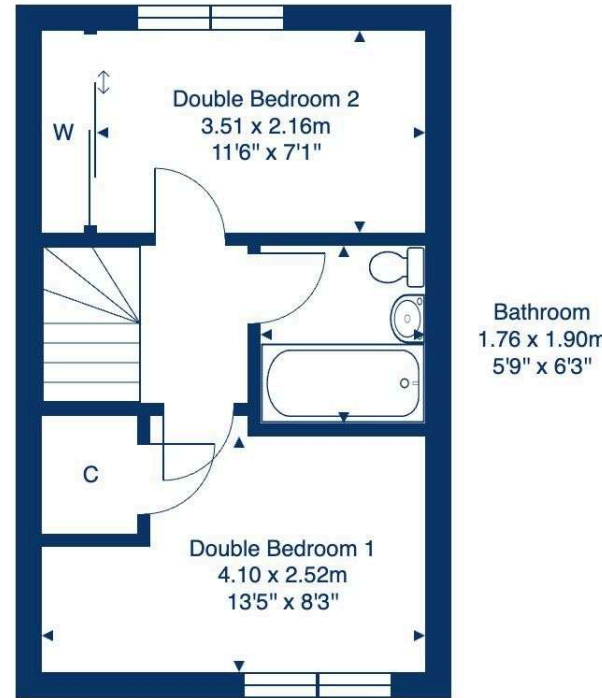


Floor Plan

28 Whitehouse Gardens, Gorebridge, EH23 4FQ



Ground Floor



First Floor

Total Area: 56.4 m² ... 607 ft²

All measurements are approximate and for display purposes only.





VMH ESTATE AGENTS



VMH SOLICITORS

More is our middle name.

Registered Office: 8 Sibbald Walk, Edinburgh, EH8 8FT

 **0131 622 2626**

 **property@vmh.co.uk**

 **vmh.co.uk**

 **DX: 552210, Edinburgh 68**

The dimensions provided are for illustration purposes only; detailed measurements should be taken personally. No documentation will be exhibited in respect of the compliance or otherwise of replacement windows. Although every attempt has been taken to ensure accuracy, the details within the brochure are not guaranteed or warranted and will not form part of any future contract to buy.