



## Charlotte Street, W1T

£680 Per week

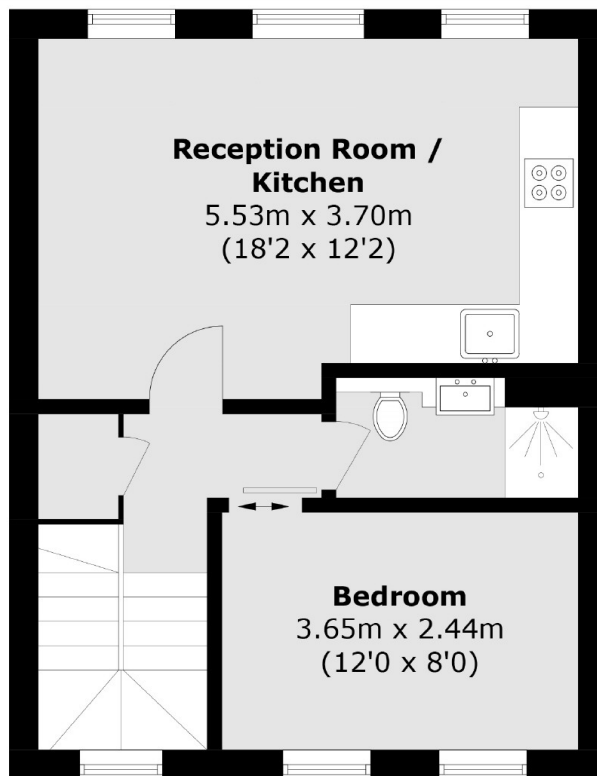
An exceptional top floor one bedroom apartment, located in the heart of Fitzrovia. The property has an open plan kitchen/reception area with wooden floors throughout the property.

Charlotte Street is perfectly located in Central London with local stations Goodge Street and Tottenham Court Road offering the Central, Northern and the Elizabeth Line which will provide fast links to The City and London Heathrow Airport.

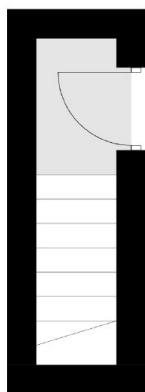
### Features

- Central Location
- Wooden Floors
- One Bedroom
- Unfurnished
- Open Plan
- Modern

# Charlotte Street, London, W1T



## Fourth Floor



## Third Floor

Total area (approx.): 43.3 sq. m (466.1 sq. ft)