



ASKING PRICE

£2,000,000

Stone Road

Kent, BR2 9AU

PROPERTY SUMMARY

A beautifully refurbished and tastefully modernised detached five bedroom family home in excess of 3100 sq ft located on one of Bromley South's most sought after residential roads. Key features include; an impressive entrance hall, three spacious reception rooms, stunning kitchen/Diner, utility, cloakroom and cinema room, to the first floor are five bedrooms, two en suites and a family bathroom, double glazed windows and externally a paved driveway and 136' (approx) landscaped rear garden. Situated within close proximity of Bromley South on a quiet residential road, we strongly advise your inspection. EPC: D

COUNCIL TAX - G

5



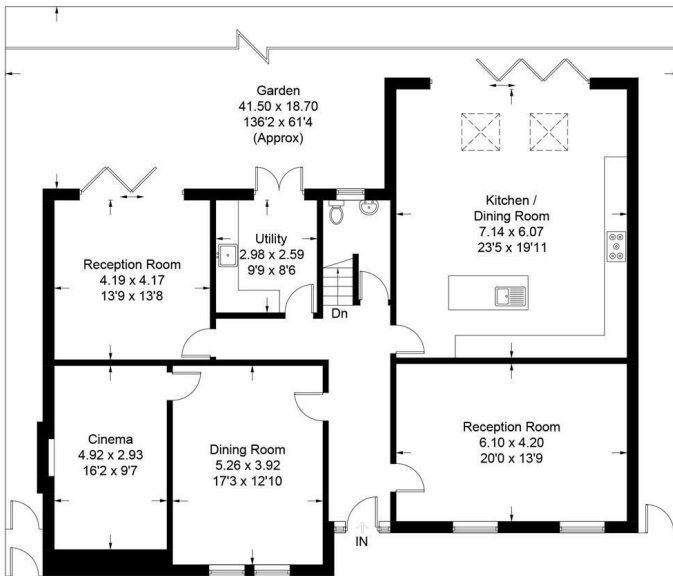
3



3

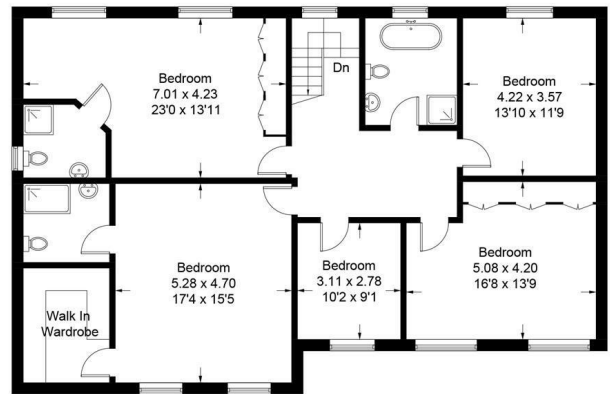






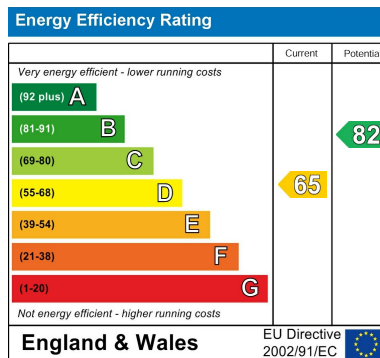
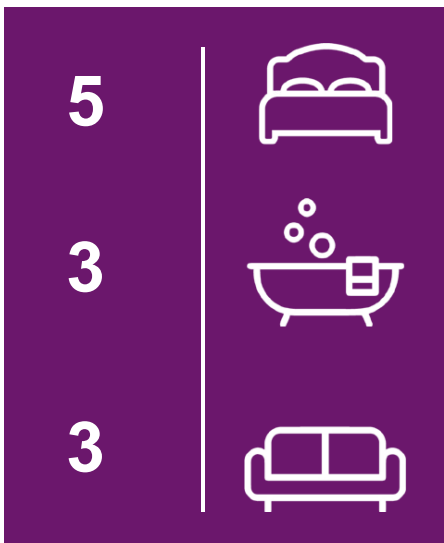
Ground Floor

Stone Road, BR2
Approximate Gross Internal Area = 295.6 sq m / 3182 sq ft



First Floor

This plan is for layout guidance only. Not drawn to scale unless stated. Windows and door openings are approximate. Whilst every care is taken in the preparation of this plan, please check all dimensions, shapes and compass bearings before making any decisions reliant upon them. Produced by Planpix on behalf of Sinclair Hammelton (ID888462)



EPC RATING: D COUNCIL TAX BAND: G

Agents Note: Whilst every care has been taken to prepare these particulars, they are for guidance purposes only. All measurements are approximate and are for general guidance purposes only and whilst every care has been taken to ensure their accuracy, they should not be relied upon and potential buyers/tenants are advised to recheck the measurements

Sinclair Hammelton

OFFICE ADDRESS
23 High Street
Bromley
Kent
BR1 1LG

OFFICE DETAILS
0208 464 5566
info@sinclairhammelton.co.uk