



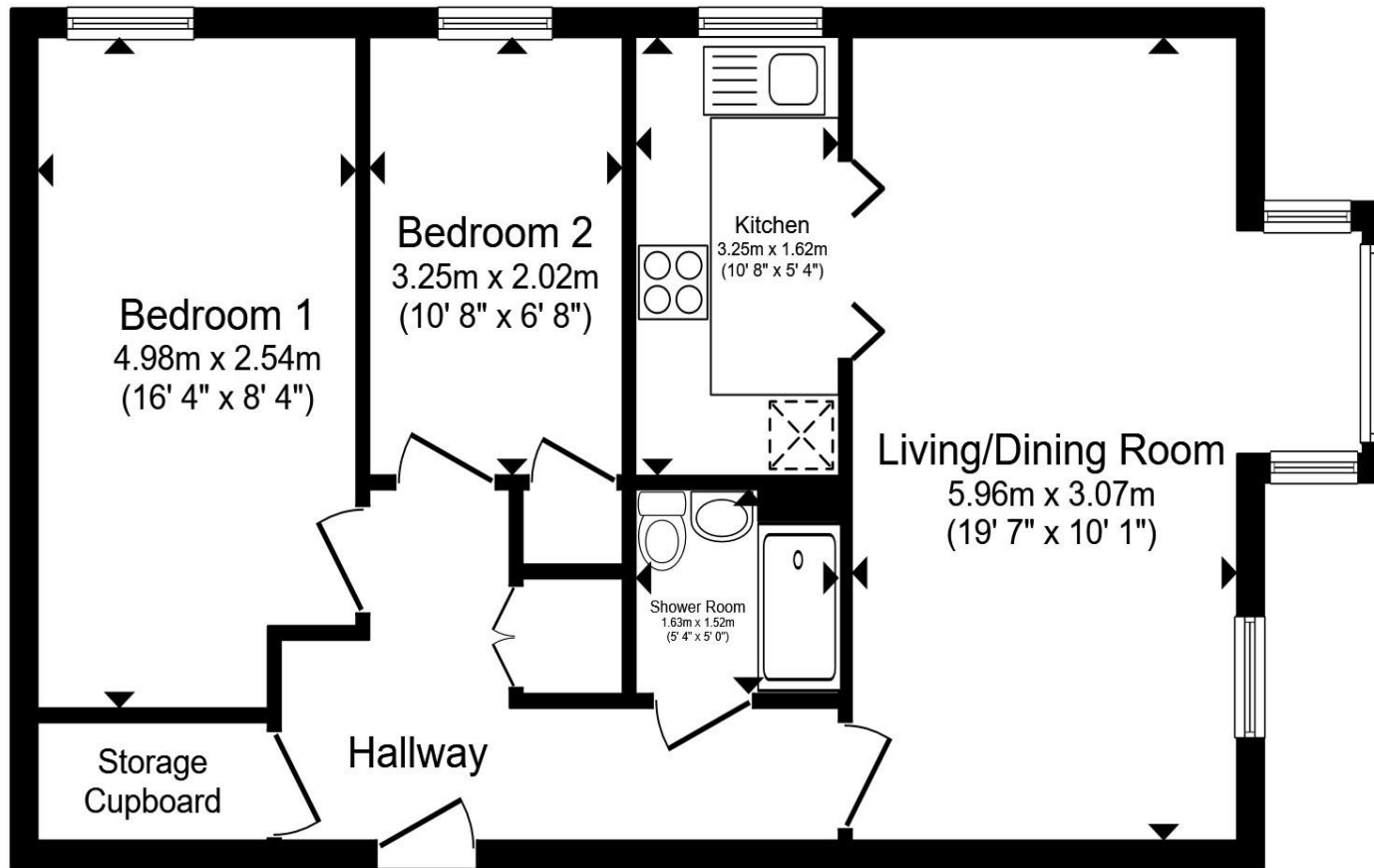
Ivyfield Court Charter Road, Chippenham SN15 2QR

welcome to

Ivyfield Court Charter Road, Chippenham

Ivyfield Court offers peaceful, secure retirement living just a short walk from Chippenham town centre, with lovely gardens, welcoming communal spaces and excellent on-site support. Its convenient location and friendly community make it a must-see!





Ground Floor

Total floor area 58.6 m² (630 sq.ft.) approx

This floor plan is for illustrative purposes only. It is not drawn to scale. Any measurements, floor areas (including any total floor area), openings and orientation are approximate. No details are guaranteed, they cannot be relied upon for any purpose and they do not form part of any agreement. No liability is taken for any error, omission or misstatement. A party must rely upon its own inspection(s). Powered by www.propertybox.io



Location

Ivyfield Court is a purpose-built retirement development located on Charter Road in Chippenham. It forms part of an established community designed for independent living, typically for residents aged 60 and over. The development consists of 34 flats and was built in 1989, offering a secure and supportive environment managed by Anchor.

The development is ideally placed within walking distance of Chippenham town centre, approximately a ten-minute walk to supermarkets, a post office, a library, cafés, hairdressers and the bus station. The local rail station is around a twenty-five-minute walk, and there is also a doctor's surgery within fifteen minutes and Chippenham Hospital approximately fifteen minutes away. Residents can enjoy a range of communal facilities, including a comfortable residents' lounge, an on-site laundry room, guest accommodation for visitors and beautifully maintained landscaped gardens. Ivyfield Court also provides a secure door entry system, lift access, a 24-hour emergency call response system and on-site or visiting management support.

A warm sense of community is encouraged through regular social events and activities such as coffee mornings, bingo, cream teas and summer barbeques, helping residents stay connected and active. Ivyfield Court provides a peaceful, well-maintained environment while remaining very close to the amenities and transport links of Chippenham, making it an excellent setting for those seeking secure and independent retirement living.

Entrance Hall
Lounge/Diner
Kitchen
Bedroom One
Bedroom Two
Bathroom
Shower Room

welcome to

Ivyfield Court Charter Road, Chippenham

- Ivyfield Court is a purpose-built retirement development offering secure, independent living for residents aged 60 and over.
- The development is ideally located within walking distance of Chippenham town centre, shops, cafés, medical facilities and transport links
- Residents have access to excellent communal facilities, including a lounge, laundry room, guest accommodation and well-maintained landscaped gardens.
- Security and support are provided through a secure door entry system, lift access and a 24-hour emergency call response service.
- No Chain



Please note the marker reflects the postcode not the actual property

view this property online [allenandharris.co.uk/Property/CHP111710](https://www.allenandharris.co.uk/Property/CHP111710)



Property Ref:
CHP111710 - 0007

1. MONEY LAUNDERING REGULATIONS Intending purchasers will be asked to produce identification documentation at a later stage and we would ask for your co-operation in order that there is no delay in agreeing the sale. 2. These particulars do not constitute part or all of an offer or contract. 3. The measurements indicated are supplied for guidance only and as such must be considered incorrect. Potential buyers are advised to recheck measurements before committing to any expense. 4. We have not tested any apparatus, equipment, fixtures or services and it is in the buyers interest to check the working condition of any appliances. 5. Where an EPC, or a Home Report (Scotland only) is held for this property, it is available for inspection at the branch by appointment. If you require a printed version of a Home Report, you will need to pay a reasonable production charge reflecting printing and other costs. 6. We are not able to offer an opinion either written or verbal on the content of these reports and this must be obtained from your legal representative. 7. Whilst we take care in preparing these reports, a buyer should ensure that his/her legal representative confirms as soon as possible all matters relating to title including the extent and boundaries of the property and other important matters before exchange of contracts.

Allen & Harris is a trading name of Sequence (UK) Limited which is registered in England and Wales under company number 4268443, Registered Office is Cumbria House, 16-20 Hockliffe Street, Leighton Buzzard, Bedfordshire, LU7 1GN. VAT Registration Number is 500 2481 05.


allen & harris



01249 655255



chippenham@allenandharris.co.uk



37 Market Place, CHIPPENHAM, Wiltshire,
SN15 3HT



[allenandharris.co.uk](https://www.allenandharris.co.uk)