



Catalina Drive  
Baiter Park Poole BH15 1TQ  
£1,350 Per month







## Details

**\*\* ZERO DEPOSIT OPTION AVAILABLE \*\*** Two bedroom first floor flat on Catalina Drive offering a perfect blend of modern living and coastal convenience. Currently undergoing a full refurbishment.

## Property Comprises

Greeted by a private entrance that leads upstairs into an inviting open plan kitchen, lounge, and dining area. The brand new kitchen is equipped with a gas hob and oven, and a washing machine and fridge freezer will soon be installed. The lounge area opens onto a delightful balcony, perfect for enjoying a morning coffee or evening relaxation.

The flat features one double bedroom and a single bedroom, which includes a handy single wardrobe cupboard. The newly installed bathroom boasts contemporary grey tiles and a vanity unit under the sink, with a shower to be installed, providing a fresh and modern space. Additional storage is conveniently located on the landing, ensuring that you have ample space for your belongings.

This property benefits from driveway parking for one vehicle and is just a short stroll away from the picturesque park and sea at Baiter. The vibrant areas of Whitecliff and Poole Quay are also within easy walking distance, offering a variety of shops, restaurants, and leisure activities.

Available now, this flat is nearly complete with its refurbishment, making it an excellent opportunity for those seeking a contemporary home in a prime location.

Council Tax Band - C  
EPC Rating - C







## More Information

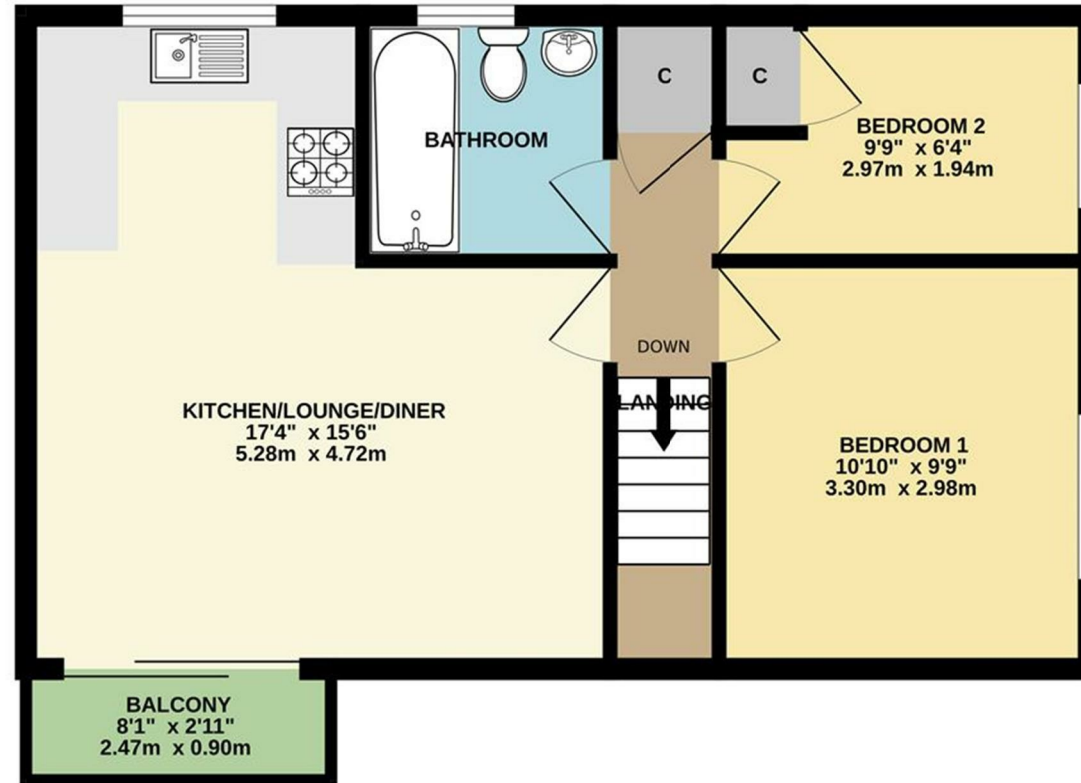
- Refurbished Flat
- Two Bedrooms
  - Balcony
- New Kitchen & Bathroom
- Driveway Parking
- Across from Baiter Park



[hello@davidsonsestates.com](mailto:hello@davidsonsestates.com) | [davidsonsestates.com](https://davidsonsestates.com)

GROUND FLOOR  
28 sq.ft. (2.6 sq.m.) approx.

1ST FLOOR  
488 sq.ft. (45.4 sq.m.) approx.



TOTAL FLOOR AREA : 516 sq.ft. (48.0 sq.m.) approx.

Whilst every attempt has been made to ensure the accuracy of the floorplan contained here, measurements of doors, windows, rooms and any other items are approximate and no responsibility is taken for any error, omission or mis-statement. This plan is for illustrative purposes only and should be used as such by any prospective purchaser. The services, systems and appliances shown have not been tested and no guarantee as to their operability or efficiency can be given.  
Made with Metropix ©2026



DAVIDSON ESTATES  
sales & lettings

# CONTACT US

*Whichever way suits you...*

07557 025044 | 07713 870543

hello@davidsonsestates.com

01202 287606

www.davidsonsestates.com

