

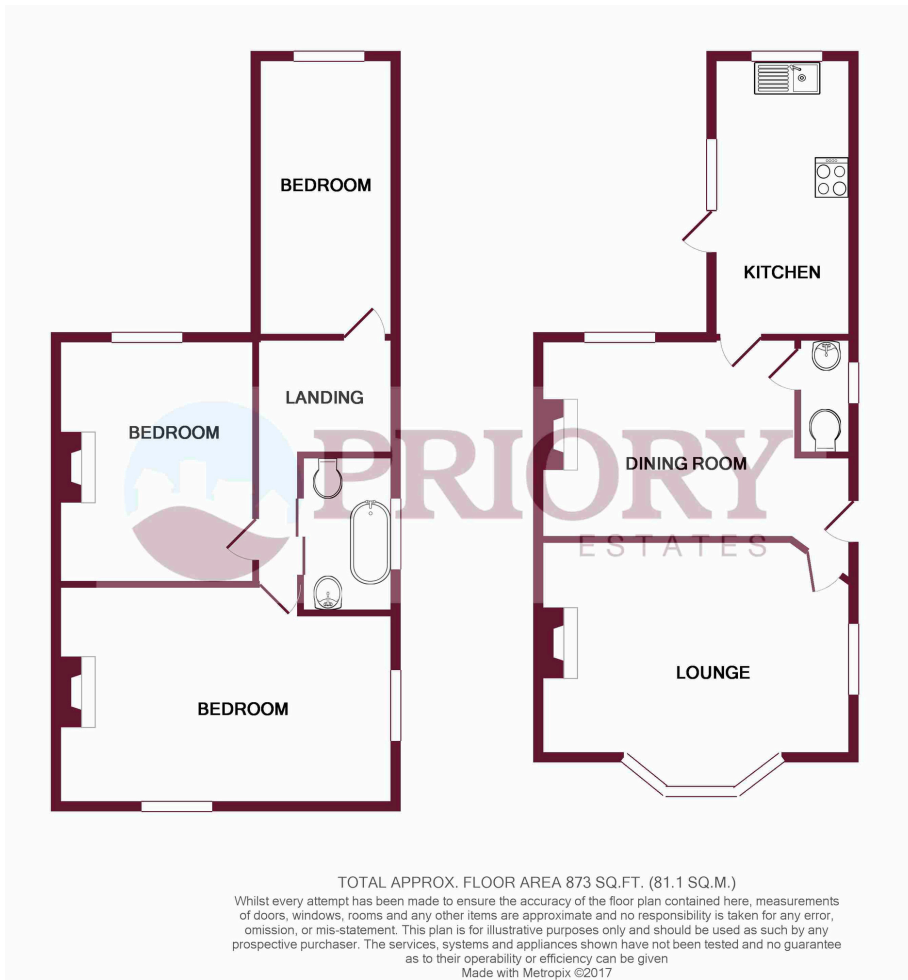


Crescent Road, Walton-on-the-Naze CO14

£1,325 pcm

A three bedroom semi detached house located in the heart of Walton-On-The-Naze, with a convenient short walk to local amenities, sea front and railway station with links to Colchester and London Liverpool Street. This property is beautifully presented throughout and offers spacious accommodation with off road parking. Available from August on an unfurnished basis.

- Close to Seafront & Local Amenities
- Downstairs W/C
- Gas Central Heating
- Off Road Parking
- Unfurnished
- Available August



Energy Efficiency Rating		Current	Potential
<i>Very energy efficient - lower running costs</i>			
(92+)	A		
(81-91)	B		80
(69-80)	C		
(55-68)	D		
(39-54)	E	46	
(21-38)	F		
(1-20)	G		
<i>Not energy efficient - higher running costs</i>			
England & Wales		EU Directive 2002/91/EC	
<small>WWW.FPC411.COM</small>			



Council Tax Band
Council Tax Band B

LOCAL AUTHORITY
Tendring District Council

Financial Requirements

A minimum of one month's rent, plus a deposit of £1,525 is required in cleared funds prior to the commencement of the tenancy.

Agents Note: Whilst every care has been taken to prepare these particulars, they are for guidance purposes only. All measurements are approximate, are for general guidance purposes only and whilst every care has been taken to ensure their accuracy they should not be relied upon and potential tenants are advised to recheck the measurements.