



JEFFREYS ROAD, SW4

£335,000

- One double bedroom
- Neutral decor
- Ideal first time buy
- Popular location
- Good transport links
- Energy rating: D





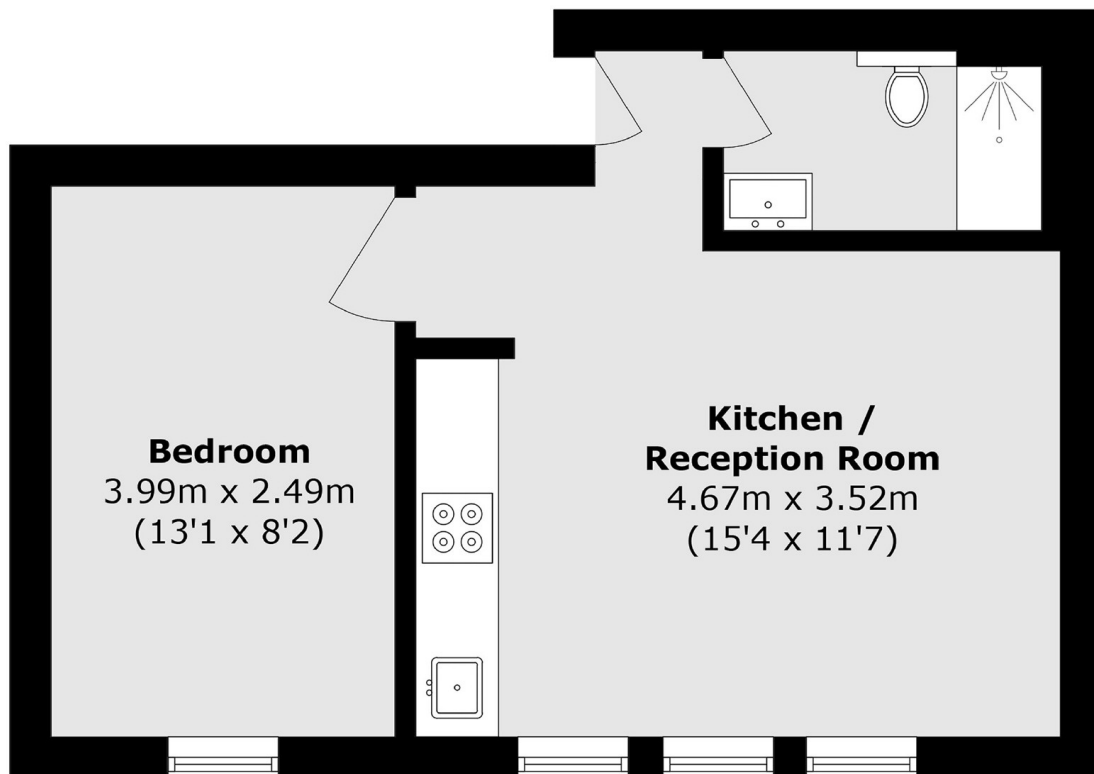
ABOUT THE HOME

A beautifully presented one bedroom flat in a Victorian conversion affording both light and ceiling height. Open plan living/dining with a well-equipped kitchen and a modern bathroom make this an ideal first time purchase.

Jeffreys Road is a pleasant residential road offering convenient transport links via Stockwell Underground (Victoria line, 0.3 mile), Clapham North Underground (Northern line, 0.4 mile) and Clapham High Street Overground (Windrush line, 0.5 mile). Residents enjoy close proximity to the shops, cafés and restaurants of nearby Clapham, and the green open space of Larkhall Park (0.1 mile).







Total area (approx.): 32.5 sq. m (349.8 sq. ft)

JACKSONS CLAPHAM

73 Abbeville Road, London,

SW4 9JN

Sales: 020 8487 3177

Lettings: 020 8487 3178

Energy Rating: D We aim to make our particulars both accurate and reliable. However they are not guaranteed; nor do they form part of an offer or contract. If you require clarification on any points then please contact us, especially if you're traveling some distance to view. Please note that appliances and heating systems have not been tested and therefore no warranties can be given as to their good working order.