



HW

ESTATE AGENTS

Flat 24, Attree Court Tower Road, Brighton

£220,000



## Flat 24

Attree Court Tower Road, Brighton

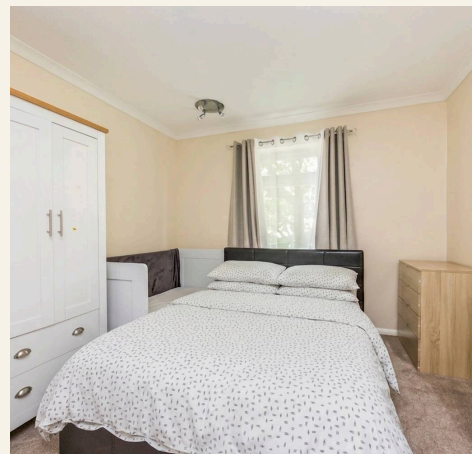
Spacious one bedroom second floor flat in Attree Court, Brighton. Close to seafront and city centre. Features double bedroom, separate kitchen, communal grounds and secure entry. Council Tax band: A

Tenure: Share of Freehold

EPC Energy Efficiency Rating: D

EPC Environmental Impact Rating: E

- One bedroom second floor apartment
- Bright and spacious living/dining room
- Separate fitted kitchen
- Generous double bedroom with built-in storage
- Approx. 470 sq. ft. / 43.70 sq. m. of accommodation
- Double glazing throughout
- Secure communal entrance
- Communal bicycle storage area
- Convenient location close to Kemp Town, the seafront and Brighton city centre
- Chain free



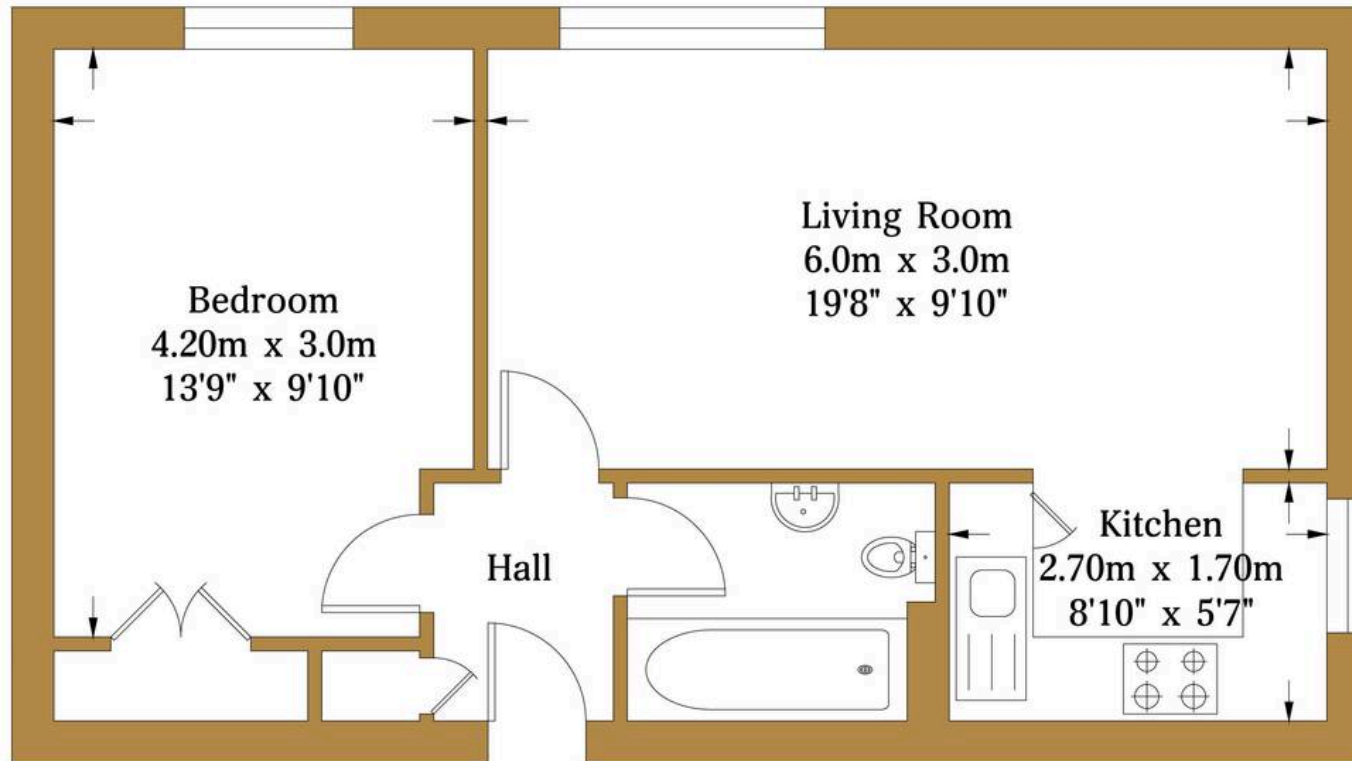


# Tower Road

Approx. Gross Internal Area :- 43.70 sq.m. 470.38 sq.ft.

HW

HAWKINS WATTS WINNARD



**Second Floor**  
**Approximate Floor Area**  
**470.38 sq ft**  
**(43.70 sq m)**



Illustration for identification purposed only, measurements are approximate, not to scale.

© hwstateagents



## HW Estate Agents

HW Estate Agents, 80 Goldstone Villas, Hove - BN3 3RU

01273 359000 · [hove@hwestateagents.co.uk](mailto:hove@hwestateagents.co.uk) · [www.hwestateagents.co.uk](http://www.hwestateagents.co.uk)

HW

ESTATE AGENTS