

FOR SALE

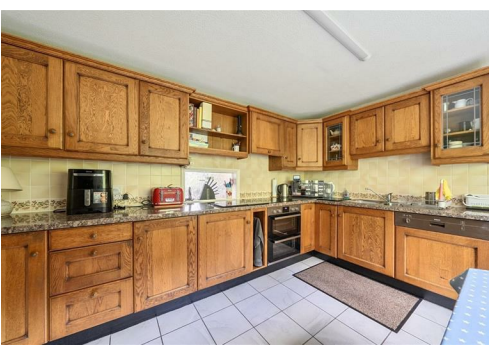
7 Mill Fields, Milford Road, Newtown, Powys, SY16 3JP



FOR SALE Offers in the region of £375,000

7 Mill Fields, Milford Road, Newtown, Powys, SY16 3JP

Situated in a quiet cul de sac just off Milford Road the property sits in a generous plot with lovely views along the valley. The property has a generous lounge, conservatory to enjoy the views, dining room, kitchen/breakfast room, W.C., utility room, four bedrooms with lots of fitted storage, refitted bathroom, large double garage, and two sheds.

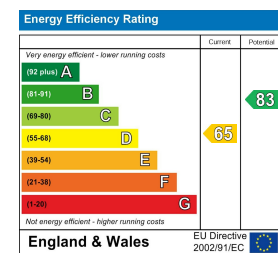


Artists impression, for illustration purposes only. All measurements are approximate. Not to Scale. www.propertyphotographix.com, Direct Dial 07973 205 007. Plan produced using PlanUp.

Property to sell? We would be delighted to provide you with a free no obligation market assessment of your existing property. Please contact your local Halls office to make an appointment. **Mortgage/financial advice.** We are able to recommend a completely independent financial advisor,

who is authorised and regulated by the FCA. Details can be provided upon request. **Do you require a surveyor?** We are able to recommend a completely independent chartered surveyor. Details can be provided upon request.

Energy Performance Rating



01938 555552

Welshpool Sales
14 Broad Street, Welshpool, Powys, SY21 7SD
E: welshpool@hallsgb.com



IMPORTANT NOTICE. Halls Holdings Ltd and any joint agents for themselves, and for the Vendor of the property whose Agents they are, give notice that: (i) These particulars are produced in good faith, are set out as a general guide only and do not constitute any part of a contract (ii) No person in the employment of or consultant to Halls Holdings has any authority to make or give any representation or warranty whatsoever in relation to this property (iii) Measurements, areas and distances are approximate, Floor plans and photographs are for guidance purposes only (photographs are taken with a wide angled / zoom lenses) and dimensions shapes and precise locations may differ (iv) It must not be assumed that the property has all the required planning or building regulation consents. Halls Holdings, Bowmen Way, Shrewsbury, Shropshire SY4 3DR. Registered in England 06597073.



2 Reception Room/s



4 Bedroom/s



1 Bath/Shower Room/s



- Quiet Cul du Sac
- Generous Plot
- Detached House
- Four Bedrooms
- Conservatory
- Large Double Garage

Dining Room

11'5" x 10'1" (3.48 x 3.07)
Double glazed window to the front elevation, central heating radiator, glazed serving hatch in to kitchen.

W.C.

Having wash hand basin set on a vanity unit with storage cupboard under, low level W.C., part tiled walls, frosted double glazed window to the rear elevation, engineered Oak Flooring.

Kitchen/Breakfast Room

10'9" x 13'0" (3.28 x 3.96)
Fitted with a range of wall and base units with laminate work surfaces, one and a half bowl stainless steel sink drainer unit with mixer tap, electric double oven and hob, extractor canopy. Space for a fridge/freezer, integrated dishwasher, frosted double glazed rear access door, double glazed window to the rear, central heating radiator, tiled floor.

Utility

10'8" x 6'3" (3.25 x 1.91)
Fitted with a range of wall and base units with laminate work surfaces, plumbing and space for dishwasher and tumble dryer, double glazed window to the rear.

Store Room

Housing a wall mounted Worcester green style gas boiler, heating controls, shelving, built in storage cupboard, door to garage, double glazed window to the rear elevation.

Landing

Loft access, central heating radiator, double glazed window to the front elevation.

Bedroom One

11'8" x 10'0" (3.56 x 3.05)
Double glazed window to the front elevation with views along the valley, built in wardrobe, draw unit, central heating radiator.

Bedroom Two

12'2" x 9'9" to wardrobes (3.71 x 2.97 to wardrobes)
Double glazed window to front elevation with views along the valley, range of built in wardrobes, draw units and bedside tables, central heating radiator.

Bedroom Three

12'0" x 10'1" (3.66 x 3.07)
Double glazed window to the rear elevation, central heating radiator, built in wardrobes and draw units, dressing table.

Bedroom Four

9'8" x 8'6" (2.95 x 2.59)
Double glazed window to the rear elevation, central heating radiator, airing cupboard.

Bathroom

Which has been refitted with bath with mixer tap and shower attachment, low level W.C., walk in electric corner shower, wash hand basin set on vanity unit with storage cupboard under, fully tiled walls, central heating radiator, frosted double glazed window to rear elevation, tiled floor.

Externally

To the front the property has a large lawned garden, tarmacked off road parking for several vehicles, courtesy light, entrance canopy, stocked borders, gate to the side. Garage measuring 17'9 x 17'1 with an electric roller shutter door, loft access and shelving. To the rear there are steps leading up to further lawned area, established trees and shrubs, two storage sheds, covered seating area. To the side of the property is a paved seating area with retractable sun canopy and outside tap.

Services

It is understood that mains electricity, water and gas central heating are connected to the property, along with private drainage with a shared septic tank with the neighbouring property which is situated across the road. None of these services have been tested by Halls.

Local Authority/Tax Band

Powys County Council, Neuadd Maldwyn, Severn Street, Welshpool, Powys, SY21 7AS Telephone (01938) 552828
The property is in Band "G"

Viewings

Strictly by appointment only with the selling agents: Halls, 14 Broad Street, Welshpool, Powys, SY21 7SD. Tel No:01938 555552. Email: welshpool@halls.gb.com

Directions

The postcode for the property is SY16 3JP
What3words reference is: apparatus.hurtles.alongside

Money Laundering

We will require evidence of your ability to proceed with the purchase, if the sale is agreed to you. The successful purchaser will be required to produce adequate identification to prove their identity within the terms of the Money Laundering Regulations (MLR 2017 which came into force 26th June 2017). Appropriate examples: Passport and/or photographic driving licence and a recent utility bill

Websites

Please note all of our properties can be viewed on the following websites:
www.halls.gb.com
www.rightmove.co.uk
www.onthemarket.com