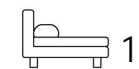


Living
made
better

River Mill One
Lewisham, SE13 5FS



Offers In Excess Of £300,000

River Mill One, Lewisham, SE13 5FS

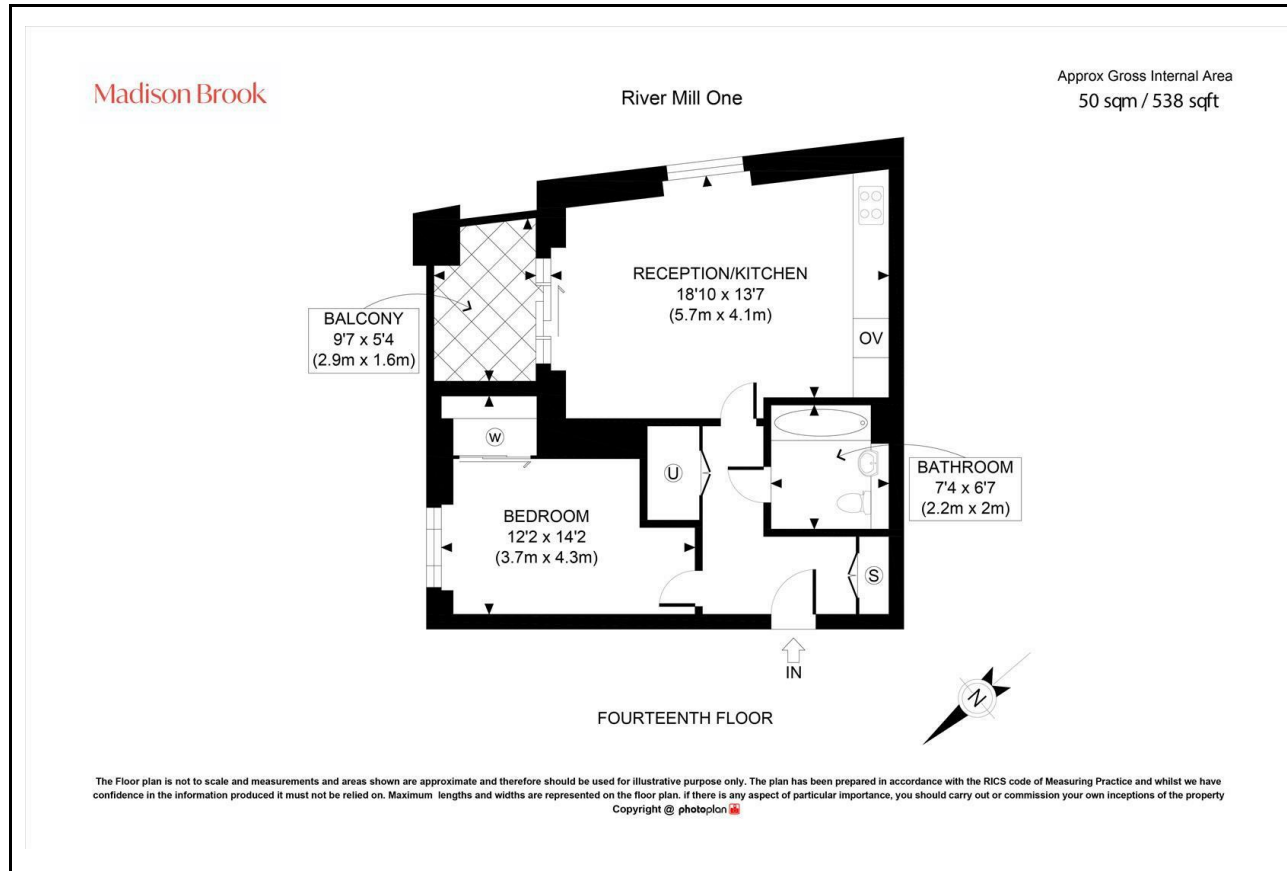
Madison Brook

Property Summary

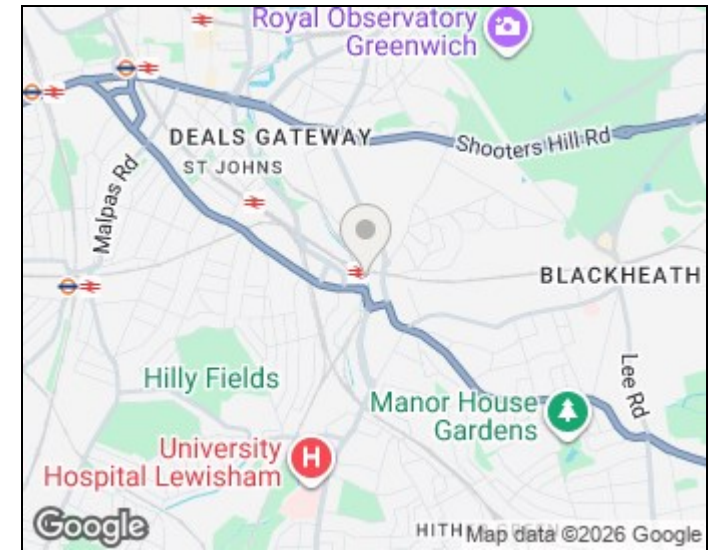
A stylish one-bedroom apartment on the 14th floor of River Mill One, SE13, offering 538 sq. ft. of modern living space with a private balcony. The property includes a bright open-plan kitchen/living area with integrated appliances, a double bedroom with built-in wardrobe, and a contemporary bathroom. Residents benefit from a roof terrace, concierge, and communal amenities. Positioned just 0.1 miles from Lewisham Station (DLR & Southeastern) and 0.2 miles from Lewisham Shopping Centre. Offered with no onward chain.

Service Charge: £3,868 pa | Ground Rent: £175 pa | Lease Remaining: 239 years

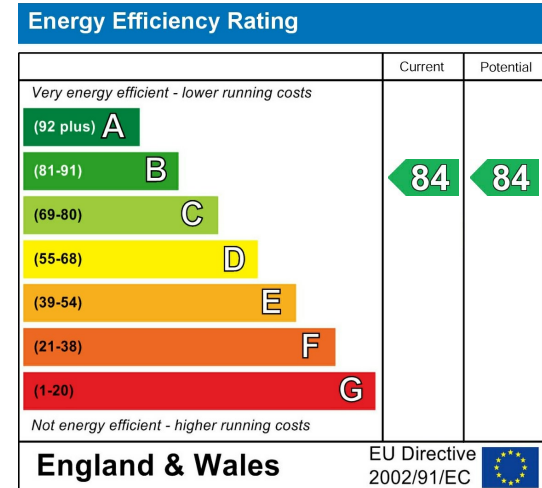
Floorplan



Area Map



Energy Efficiency Graph



These particulars, whilst believed to be accurate are set out as a general outline only for guidance and do not constitute any part of an offer or contract. Intending purchasers should not rely on them as statements of representation of fact, but must satisfy themselves by inspection or otherwise as to their accuracy. No person in this firm's employment has the authority to make or give any representation or warranty in respect of the property.

43 Loampit Vale, Lewisham, London, SE13 7FT

Tel: 020 3946 6200 Email:

lewisham@madisonbrook.com

<https://madisonbrook.com/>