



## Bromyard Avenue, W3

### £300,000

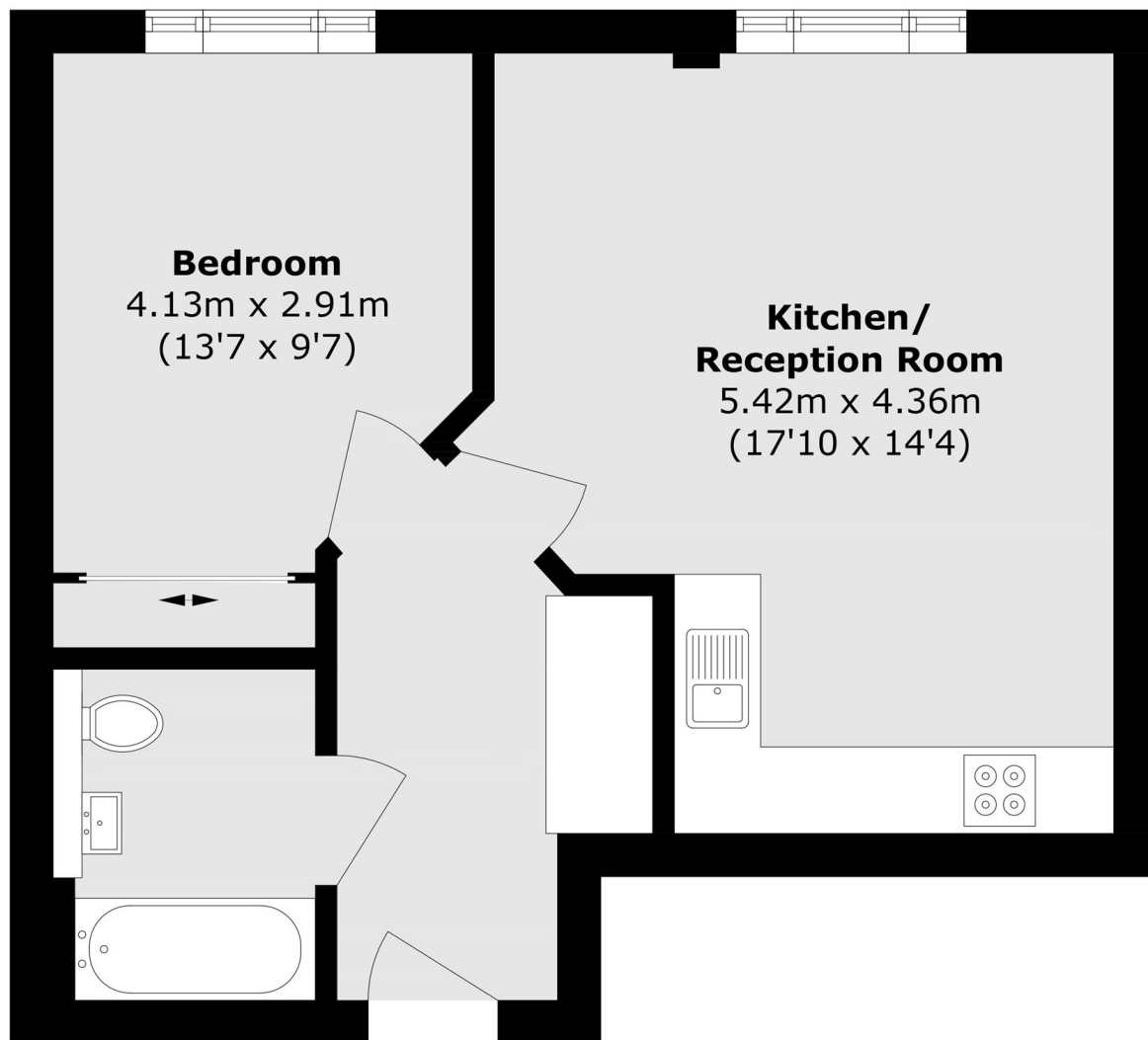
A one double bedroom apartment with an open plan entertaining space, with ample storage situated within Bromyard House, a highly sought-after gated community set within an iconic London building. Some of the many features include a 24hr concierge service, a private intercom entry system and courtyard communal gardens

Bromyard Avenue is conveniently located near to several parks including Acton Park. Mode Gym, an excellent health and fitness club, is conveniently located on Bromyard Avenue. East Acton tube (Central line), Acton Central (Overground) and Acton Main Line (Elizabeth line) stations are all within easy reach.

### Features

- One Double Bedroom
- South Facing
- Gated Development
- 24 Hour Concierge
- Communal Gardens
- No Onwards Chain

Bromyard Avenue,  
London, W3



Total area (approx.): 43.9 sq. m (472.5 sq. ft)