

Commercial Street, E1

£3,300 Per calendar month

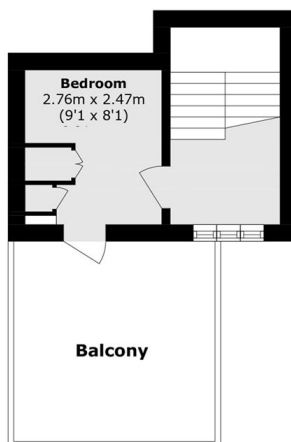
A uber trendy two double bedroom apartment with a glorious outside space. The flat has a modern feel throughout and the split level layout only adds to the feeling of space.

Commercial Street is really in the heart of the trendy and vibrant East End of London. Living between Spitalfields Market and Brick Lane the future tenant should never be bored.

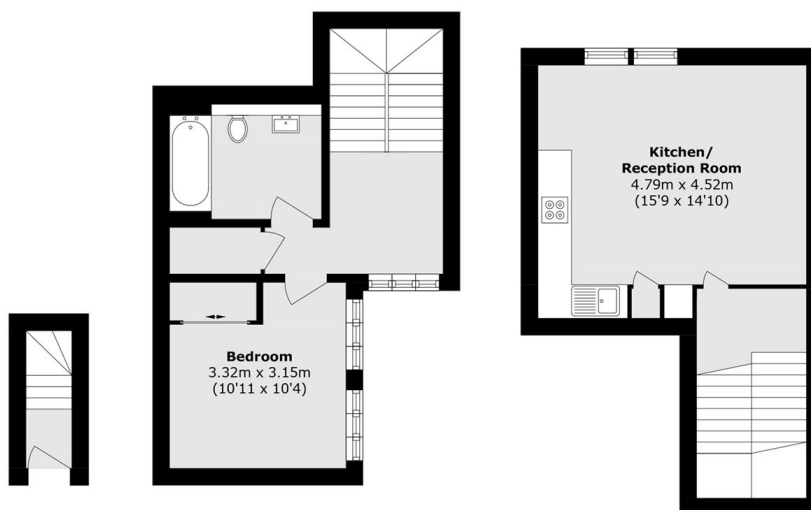
Features

- Two Bedroom
- Roof Terrace
- Furnished
- Split Level
- Wood Flooring
- Spitalfields Market

Commercial Street, London, E1



Fourth floor



First Floor

Second Floor

Third Floor

Total area (approx.): 72.4 sq. m (779.3 sq. ft)

Balcony Total (approx.): 12.8 sq. m (137.7 sq. ft)