



Wallace Road

Canonbury, N1

Asking Price £850,000

A bright and spacious 2 double bedroom, 2 bathroom apartment located on the top floor of an imposing Victorian period house located on a tree-lined road moments from Canonbury Station.

CHESTERTONS



Wallace Road

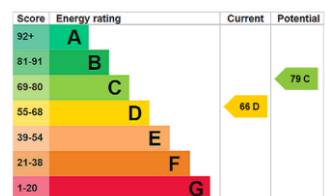
Canonbury, N1

- 2 double bedrooms
- 2 bathrooms
- Top floor
- Imposing Victorian building
- Envious location moments from Canonbury Station



A bright and spacious 2 double bedroom, 2 bathroom apartment located on the top floor of an imposing Victorian period house located on a tree-lined road moments from Canonbury Station. The property is bright and well-proportioned comprising; impressive 17x13 foot living room flooded with light from the 2 sash-windows; separate modern kitchen to the rear; 2 double bedrooms with the master bedroom generously sized; two bathrooms both with showers. The property has recently been refurbished by the current owner. Wallace Road is located just to the north of St Pauls Road, across from the New River Walk and is a short walk to the greenery of Canonbury Village and Clissold Park, alongside the trendy cafes, restaurants and bars found at Highbury Park, Stoke Newington Church Street and Newington Green. Transport can be found via a very short walk to Canonbury Station (London Overground), with a number of bus routes running on Green Lanes and from Newington Green. Highbury & Islington is the closest underground station, sitting on the Victoria Line and with National Rail trains. Upper Street and Canonbury provide good local shops, restaurants, etc.

Tenure: Leasehold 125 years
Service Charge: £5540
Ground Rent: £0
Local Authority: Islington Council
Council Tax Band: E

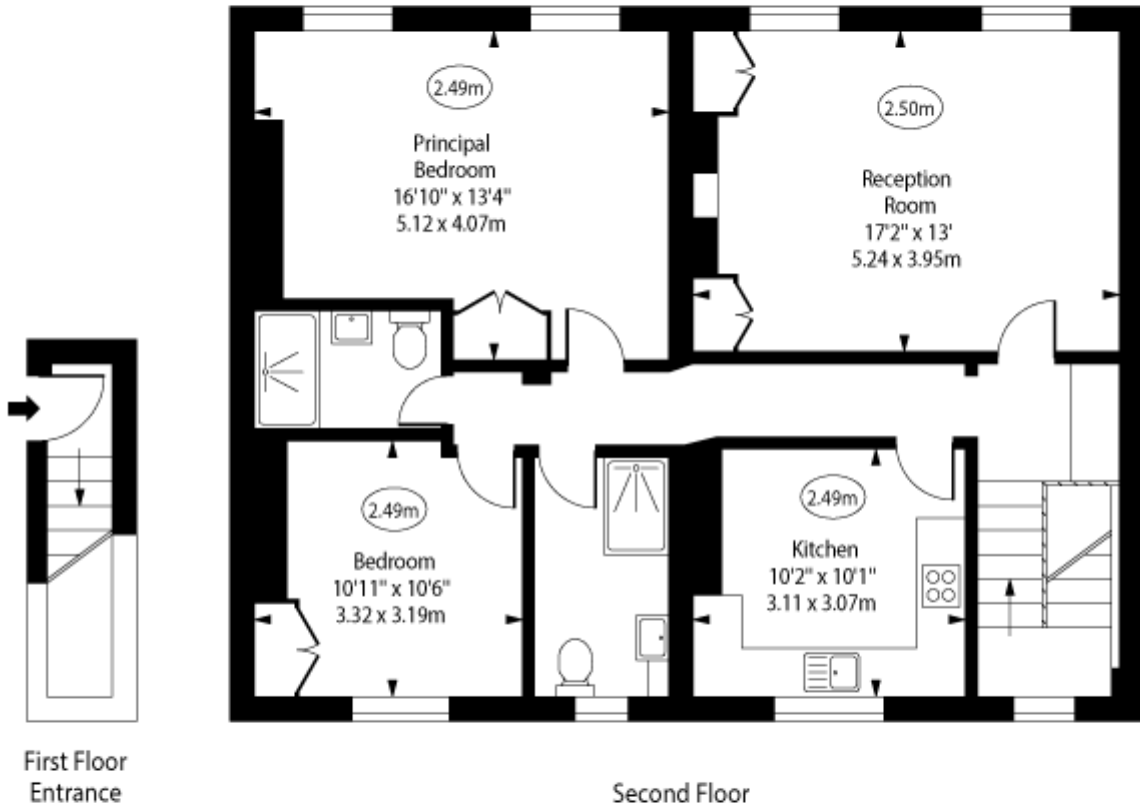


Chestertons Islington Sales

327-329 Upper Street
 Islington
 London
 N1 2XQ
 islington@chestertons.co.uk
 020 7359 9777
 chestertons.co.uk

Wallace Road, N1

○ - Ceiling Height



Approx Gross Internal Area 960 Sq Ft - 89.18 Sq M

Every attempt has been made to ensure the accuracy of the floor plan shown. However, all measurements, fixtures, fittings, and data shown are approximate interpretations and for illustrative purposes only. Measured according to the RICS. Not To Scale.

www.goldlens.co.uk

Ref. No. 029193J

