



Semi-Detached Bungalow

13 Anneyard Drive, Skelmorlie, PA17 5BN



taylorandhenderson.co.uk

| | | | | | | | |
|---|--|---|--|---|--|---|----------------------|
| 2 | | 3 | | 1 | | D | EPC rating |
|---|--|---|--|---|--|---|----------------------|

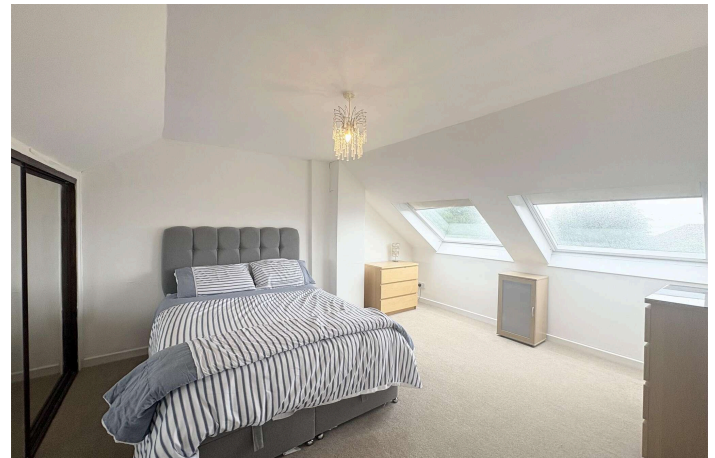


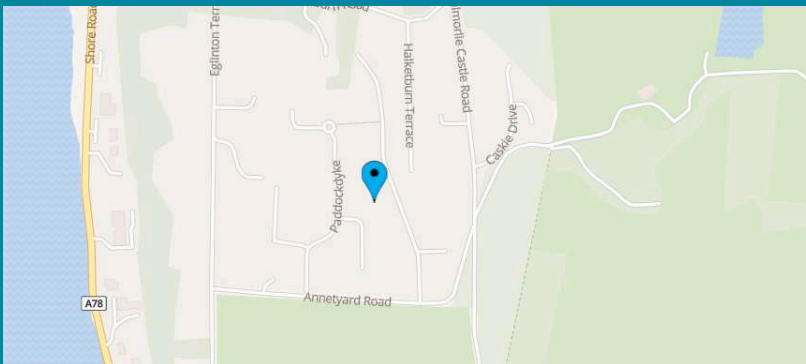
13 Annetyard Drive

Taylor & Henderson are delighted to present to the market this rarely available semi-detached bungalow, situated within a popular residential area. The well-proportioned accommodation comprises an entrance porch, welcoming hallway, spacious lounge with patio doors leading to the rear garden, modern fitted kitchen, double bedroom, study/fourth bedroom with patio doors also leading to the garden, and a contemporary family bathroom on the ground floor. The upper level offers two further double bedrooms, one of which benefits from fitted mirrored wardrobes and views over to the Kyles of Bute and beyond.. Further features include gas central heating, double glazing throughout, and excellent storage facilities. Externally, the front garden is attractively landscaped with a variety of mature shrubs and plants. A monobloc driveway provides off-street parking and leads to a detached garage. The enclosed rear garden features a paved patio area, a well-maintained lawn bordered by colourful shrubs, and a charming timber summer house, creating an ideal space for relaxing and entertaining. Skelmorlie, a popular coastal village and neighbouring Wemyss Bay offer a range of amenities, recreational facilities and travel links to Glasgow by bus, train and an upgraded road network. Skelmorlie is well placed for regular ferry services operates from nearby towns, Wemyss Bay for the Isle of Bute, Largs for Millport on the Isle of Cumbrae and Ardrossan for the Isle of Arran. Local amenities include primary schooling, a golf course and a bowling club. There are a selection of restaurants and hotels in nearby Largs, the bustling holiday town which is only 4 miles to the south of Skelmorlie and offers secondary schooling and a host of local shops and leisure amenities

Measurements

| | |
|-------------------|-------------|
| Entrance Porch | 9'5 x 5'3 |
| Reception Hallway | |
| Lounge | 15'9 x 13'9 |
| Kitchen | 9'8 x 7'8 |
| Bedroom 1 | 12'3 x 11'4 |
| Bedroom 2 | 14'9 x 12'5 |
| Bedroom 3 | 10' x 9'9 |
| Bedroom 4/Study | 9'5 x 8'5 |
| Bathroom | 9'5 x 8'5 |

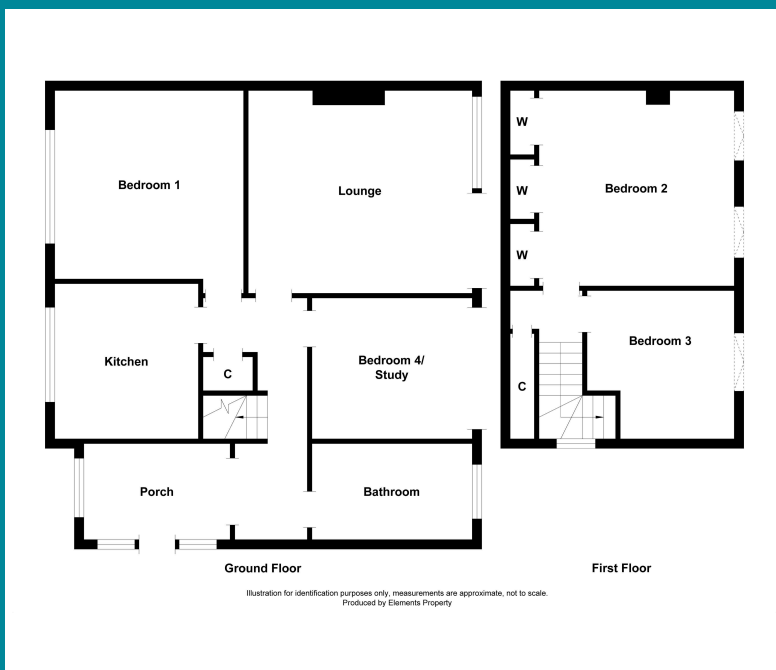




Viewing
Through solicitors on 01294 606700

Email
property@taylorandhenderson.co.uk

Reference
E508182



Our Offices

51 Hamilton Street, Saltcoats, Ayrshire, KA21 5DX
Tel: 01294 606700 & Fax: 01294 464827

22 Bank Street, Irvine, Ayrshire, KA12 0AG
Tel: 01294 278306 & Fax: 01294 272886

83 Main Street, Kilwinning, Ayrshire, KA13 6AN
Tel: 01294 557506 & Fax: 01294 558552
Email: property@taylorandhenderson.co.uk



DISCLAIMER: Whilst we endeavour to make these particulars as accurate as possible, they do not form part of any contract of offer, nor are they guaranteed. Measurements are approximate and in most cases are taken with a digital/sonic-measuring device and are taken to the widest point. We have not tested the electricity, gas or water services or any appliances. Photographs are reproduced for general information and it must not be inferred that any item is included for sale with the property. If there is any part of this that you find misleading or simply wish clarification on any point, please contact our office immediately when we will endeavour to assist you in any way possible.