



Jordan fishwick

27 Chelsfield Grove, Chorlton, M21 7SU

Guide Price £230,000

27 Chelsfield Grove, Chorlton, Manchester, M21 7SU

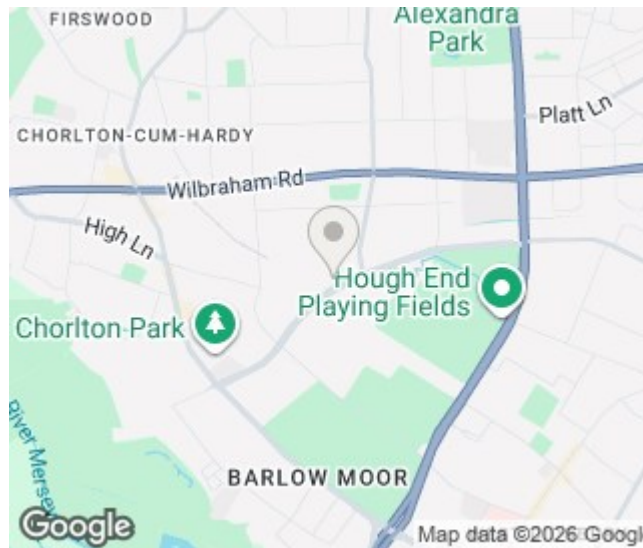
Guide Price £230,000



The Property

*****NO CHAIN***** Located within a well regarded purpose built development on a quiet residential CUL-DE-SAC walking distance from Chorlton Village and the Metro is this delightful **TWO DOUBLE BEDROOM GROUND FLOOR APARTMENT** providing spacious and light accommodation, ideal for a young couple or first time buyer. This delightful property benefits from **ALLOCATED OFF ROAD PARKING** and is offered for sale in **MOVE-IN READY CONDITION** having been recently refurbished and decorated to an excellent standard throughout by the current owner. Located only 0.2 miles from the Metro (St Werburgh's Road) this splendid property is ideally placed for those requiring fast access to the City Centre and Airport as well as being within walking distance to multiple local schools, parks and as well as all amenities in Chorlton Village. The accommodation briefly comprises: communal entrance hallway, entrance hall, 15ft lounge/dining room with bay window open to the kitchen, spacious main bedroom with full height **FITTED WARDROBES**, second double bedroom and bathroom, recently re-fitted with a modern three piece suite with over bath shower. Double glazing and electric heating are installed throughout. Externally, there are well maintained communal gardens and residents car park surround the development. An internal viewing is most highly recommended.

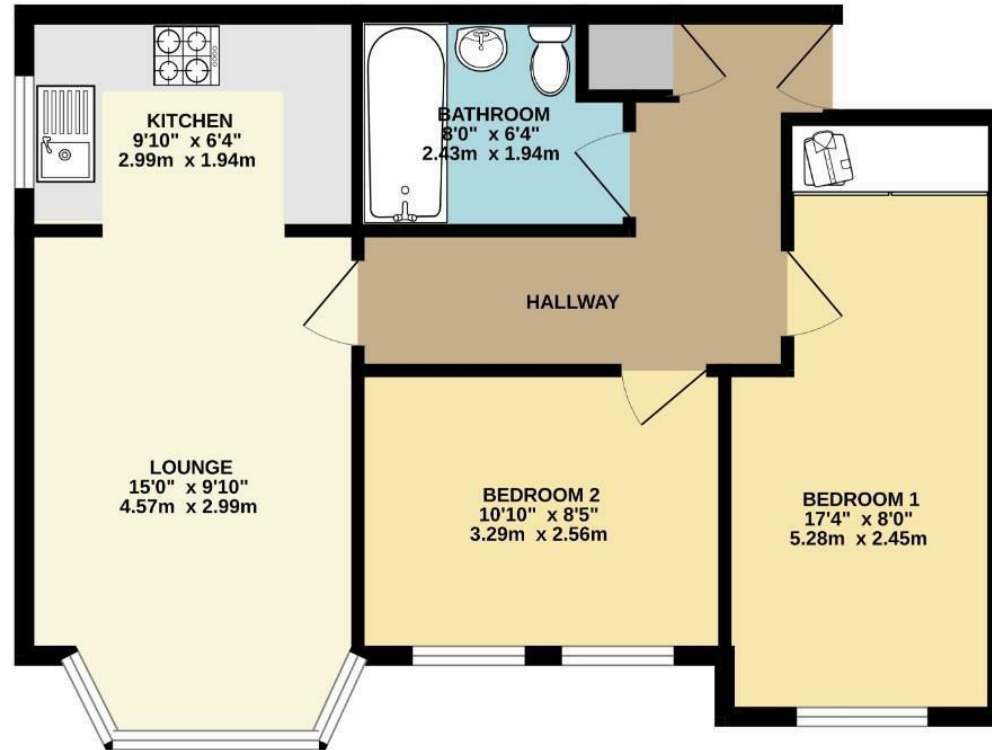
- NO CHAIN
- Delightful two double bedroom ground floor apartment
- Quiet residential CUL-DE-SAC
- Well regarded purpose built development
- Move-in ready condition
- Recently renovated kitchen and bathroom
- Walking distance to Chorlton Village, multiple schools and parks
- 0.2 miles to the Metro (St Werburgh's Road)
- Allocated off road parking
- Council Tax: B



Energy Efficiency Rating		
	Current	Potential
Very energy efficient - lower running costs		
(92 plus) A		
(81-91) B		
(69-80) C		
(55-68) D		
(39-54) E		
(21-38) F		
(1-20) G		
Not energy efficient - higher running costs		
England & Wales	EU Directive 2002/91/EC	



GROUND FLOOR
558 sq.ft. (51.9 sq.m.) approx.



TOTAL FLOOR AREA : 558 sq.ft. (51.9 sq.m.) approx.
Measurements are approximate. Not to scale. Illustrative purposes only.
Made with Metropac ©2025



These particulars are believed to be accurate but they are not guaranteed and do not form a contract. Neither Jordan Fishwick nor the vendor or lessor accept any responsibility in respect of these particulars, which are not intended to be statements or representations of fact and any intending purchaser or lessee must satisfy himself by inspection or otherwise as to the correctness of each of the statements contained in these particulars. Any floorplans on this brochure are for illustrative purposes only and are not necessarily to scale.

Offices at: Chorlton, Didsbury, Disley, Hale, Glossop, Macclesfield, Manchester Deansgate, Manchester Whitworth Street, New Mills, Sale, Wilmslow and Withington