



Elizabeth Gardens Rochford SS4 1FS

for sale guide price
£475,000



Property Description

****Guide Price £475,000-£500,000**** This beautifully presented FOUR bedroom detached house offers spacious and versatile living accommodation, making it a perfect family home.

The property benefits from, spacious entrance hallway, ground floor cloakroom, spacious feature lounge, full width modern fitted kitchen-dining room benefiting from built in appliances, first floor FOUR spacious bedrooms, master bedroom benefiting from ensuite shower room, fitted family bathroom, `

The property is situated within the desirable Eastbury Park area of Rochford, this home enjoys easy access to Rochford Train Station, providing direct links to London Liverpool Street. Excellent local amenities, including shops, restaurants, and leisure facilities, are just moments away. Families will appreciate the proximity to well-regarded schools, while convenient bus links and major road network is accessible.

VIEWING HIGHLY RECOMMENDED,
PRICED TO SELL!

Lounge

14' 11" x 11' 7" (4.55m x 3.53m)

Kitchen/Dining Room

21' 3" x 12' 10" (6.48m x 3.91m)

Bedroom One

13' 9" x 10' 7" (4.19m x 3.23m)

En-Suite

6' 2" x 6' 5" (1.88m x 1.96m)

Bedroom Two

13' 9" x 10' 7" (4.19m x 3.23m)

Bedroom Three

9' 2" x 6' 10" (2.79m x 2.08m)

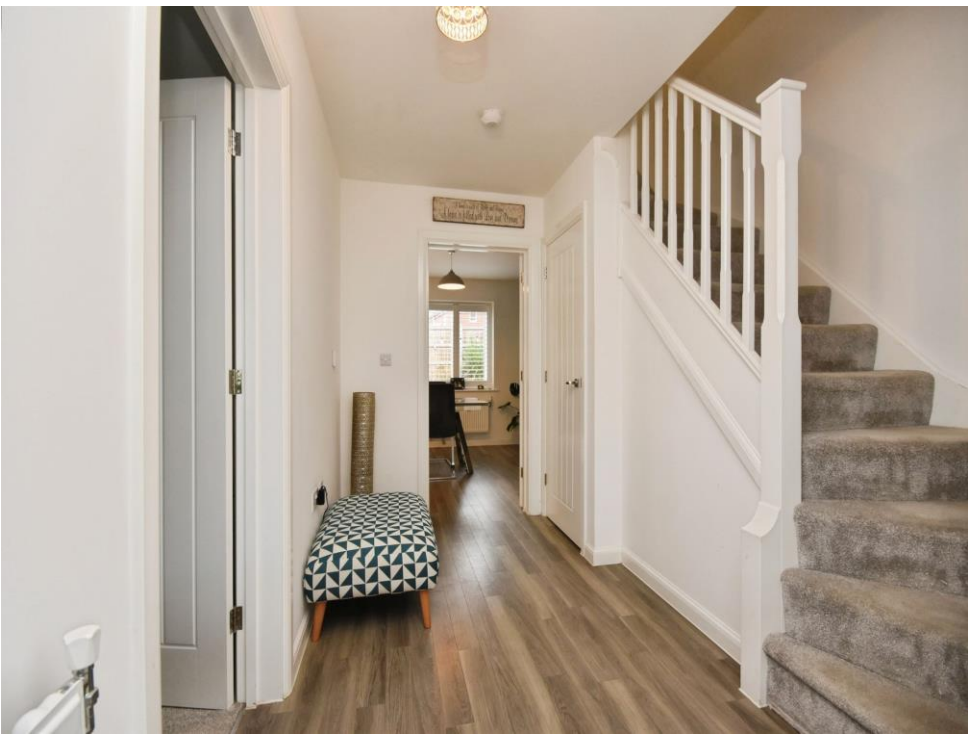
Bedroom Four

9' 2" x 6' 10" (2.79m x 2.08m)

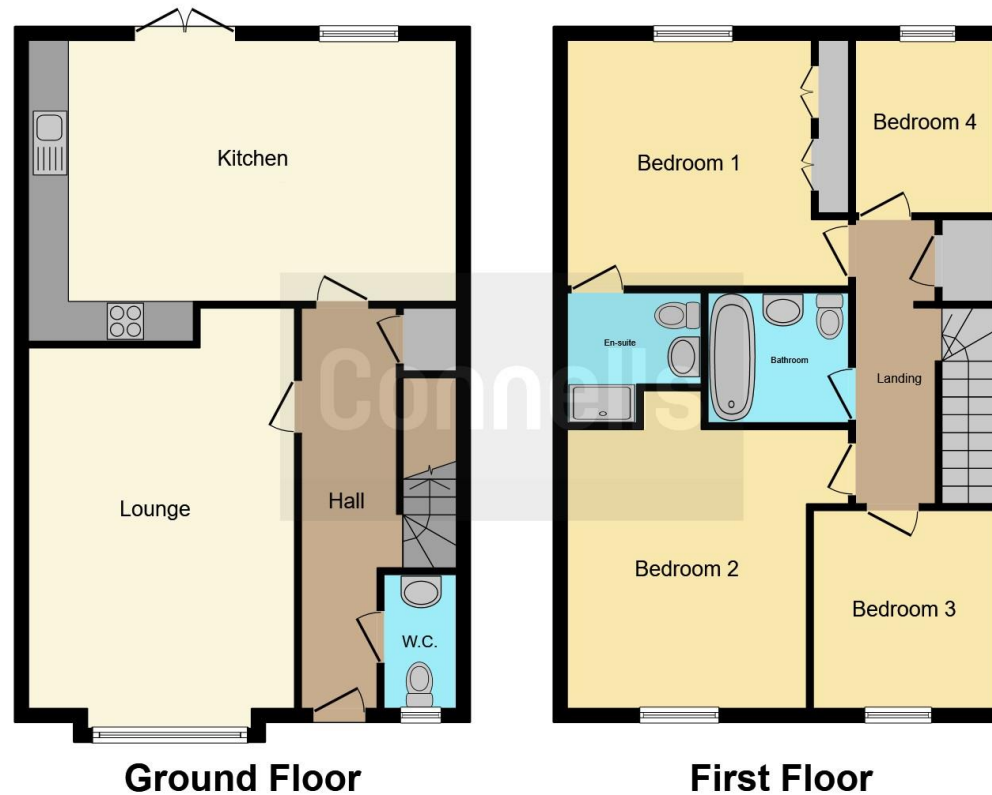
Bathroom

6' 2" x 7' 2" (1.88m x 2.18m)









This floor plan is for illustrative purposes only. It is not drawn to scale. Any measurements, floor areas (including any total floor area), openings and orientation are approximate. No details are guaranteed, they cannot be relied upon for any purpose and they do not form part of any agreement. No liability is taken for any error, omission or misstatement. A party must rely upon its own inspection(s). Powered by www.focalagent.com

To view this property please contact Connells on

T 01268 777 767
E rayleigh@connells.co.uk

113-115 High Street
 RAYLEIGH SS6 7QA

EPC Rating: B Council Tax
 Band: E

Tenure: Freehold

view this property online connells.co.uk/Property/RAY309016



1. MONEY LAUNDERING REGULATIONS Intending purchasers will be asked to produce identification documentation at a later stage and we would ask for your co-operation in order that there will be no delay in agreeing the sale. 2. These particulars do not constitute part or all of an offer or contract. 3. The measurements indicated are supplied for guidance only and as such must be considered incorrect. Potential buyers are advised to recheck measurements before committing to any expense. 4. We have not tested any apparatus, equipment, fixtures, fittings or services and it is in the buyers interest to check the working condition of any appliances.

Connells Residential is registered in England and Wales under company number 1489613, Registered Office is Cumbria House, 16-20 Hockliffe Street, Leighton Buzzard, Bedfordshire, LU7 1GN. VAT Registration Number is 500 2481 05.

See all our properties at www.connells.co.uk | www.rightmove.co.uk | www.zoopla.co.uk

Property Ref: RAY309016 - 0005