



Hazelhurst Way, Tarporley, CW6 9YH

£275,000

🛏 3 🚿 2 🚗 1



- Affordable Housing Scheme property is 100% owned, but sold at a 40% discount
- Spacious Lounge
- Downstairs WC
- Two Further Bedrooms
- Large Garden
- Three Bedroom End Terraced Property
- Dining Kitchen with Patio Doors to the Garden
- Master Bedroom with En-suite
- Bathroom
- Driveway Parking for Two Cars



A beautifully presented three-bedroom end terraced home situated within the highly desirable village of Tarporley, offered for sale under an affordable housing scheme with a 40% discount, eligibility criteria apply. This modern and spacious property features a bright lounge and contemporary fitted dining kitchen, downstairs wc, three well-proportioned bedrooms, en-suite and family bathroom. Enclosed rear garden, and driveway parking for two cars. Ideally positioned close to local amenities, schools, and transport links, the property offers an excellent opportunity for first-time buyers or families seeking affordable living within one of Cheshire's most sought-after locations.

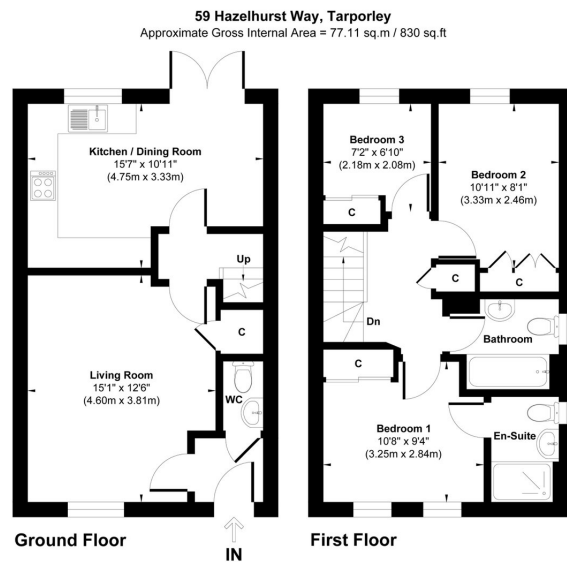


Illustration for identification purpose only, measurements approximate and not to scale.

Score	Energy rating	Current	Potential
92+	A		96 A
81-91	B	83 B	
69-80	C		
55-68	D		
39-54	E		
21-38	F		
1-20	G		