



TO LET

Atherley Way, Hounslow, TW4 5NG
£1,950 Per Calendar Month

DBK
ESTATE AGENTS

- Available To Rent Mid August!
- Two Double Bedrooms
- Open Plan Living
- Newly Manicured Front & Rear Garden
- On Street Parking
- Newly Refurbished Home
- Brand New Modern Fitted Kitchen
- Stylish Family Bathroom/ WC
- Ample Storage
- Hounslow & Whitton Stations 1.3 Miles

THE PROPERTY

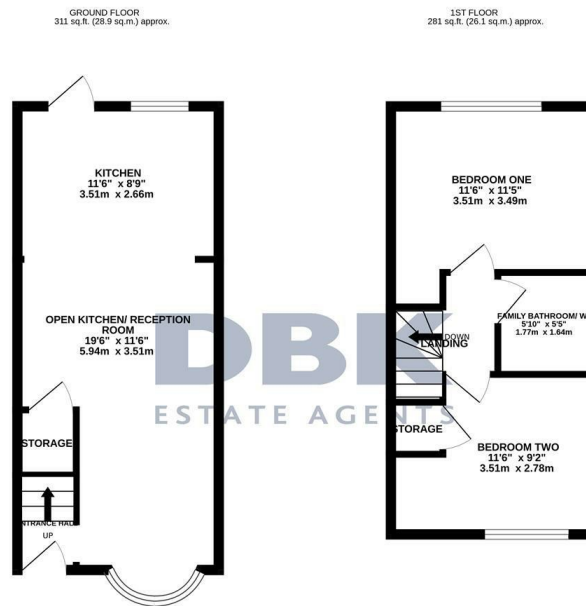
Available To Rent Mid August!

This newly refurbished home offers contemporary living finished to a high standard throughout. The property features two well-proportioned double bedrooms, providing comfortable and versatile accommodation.

At the heart of the home is a brand new, modern fitted kitchen, seamlessly flowing into a bright open-plan living area, ideal for both everyday living and entertaining. The accommodation is complemented by a stylish family bathroom with WC, designed with modern fittings and a clean, elegant finish.

Externally, the property benefits from newly manicured front and rear gardens, offering attractive outdoor space, while ample storage enhances practicality. On-street parking is readily available.

Conveniently located, the property is within approximately 1.3 miles of both Hounslow and Whitton stations, providing excellent transport links and access to local amenities.



TOTAL FLOOR AREA: 592 sq ft. (55.0 sq.m.) approx.
 Whilst every attempt has been made to ensure the accuracy of the floorplan contained here, measurements of floor, ceiling, walls and any other items are approximate and no responsibility is taken for any errors.
 Dimensions are for reference. The plan is for illustrative purposes only and should be used as a guide only for prospective purchasers. The services, systems and appliances shown have not been tested and no guarantee is given as to their operability or efficiency can be given.
 Made with Metronix CC025